



QUATTROCCHI KWOK
ARCHITECTS

MEETING RECORD

1331.01- B.2

January 30, 2014

6:00PM

Alameda USD Master Planning

Amelia Earhart Elementary School-Master Planning Committee Meeting #2

Attendees:

Raymond Keck, Project Manager, QKA

Cam Hawing, Job Captain, QKA

Also see sign-in sheet attached

Distribution:

Via District Website

Master Planning – Amelia Earhart Elementary School:

Needed improvements and/or new facilities:

- Recap of Meeting 1 discussion and recommendations
- Presentation of draft Master Plan for discussion

Site

Pick up/Drop off:

- Propose to City of Alameda traffic engineer relocation of the pedestrian crossing at the corner of Davey and Packet landing. That crossing is cause of major bottleneck for drop off and pick up. Consider locating it near the school parking exit, which would be safer for pedestrians and would alleviate traffic congestion
- The school is in contact with City traffic engineer to discuss resumption of project trial options for pedestrian crossing safety (suspended for lack of funding)
- Investigate whether any traffic requirements should be considered for the new housing/ hotel development that may impact the school

c. Buildings

Multi-Purpose Building

- Consider replacing freestanding tables with pocket tables for safety and improved storage
- Consider adding storage under stage

- Need for toilet rooms for students, staff and public
- Moveable (motorized) partition is inoperable; should be repaired to support flexible use of the MPR

Classrooms

- Dedicated Science classrooms should be provided, centrally located
- Priority to be in a permanent structure with all requirements for a Science classroom
- Music instruction, central to the curriculum, needs a dedicated classroom, with room for dance, instrument storage, equipped with smart board; consider adjacency with MPR
- Special Day Classes should be located closer to Kinder classes and play yard

Prioritization:

A priority list and site sketches were provided by Jim Myers, an attending parent, and discussed by the group. See Attachments.

Phase 1:

- Safety and Security
 - Improved fencing, site lighting, security cameras
- Traffic
 - Lengthen on-site pickup/drop-off loop, study traffic engineer Specialized- much larger HBC redevelop, etc.
- Communications
 - Upgrade phones, PA system, improved signage
- Fields
 - Restore playfields, provide adequate storage, replace on-grade sandboxes with raised motor skills equipment

Phase 2: Building Expansion (potentially close another school)

- New classroom Pods to south – permanent structures to replace portables
- Landscaped outdoor learning areas
- Technology upgrades and Science labs

Phase 3

- Enlarged or new MPR and Administration Building
- Media Center/Library relocated to modernized (current) Administration building
- New playfields located along Island Drive

Jim

PRIORITIES

PHASE I:

1. SAFETY & SECURITY
 - FENCING
 - LIGHTING
 - CAMERAS
 - SECURE LOADING DOCK/DELIVERIES

2. TRAFFIC - STUDY, TRAFFIC - MINA LARGER (SPECIALIZED) HSC REDEVELOP etc.

3. COMMUNICATIONS -
 - PHONES
 - P.A. SYSTEM
 - SIGNAGE.

4. FIELDS - PE, MOTOR FITNESS STORAGE SANDBOXES

PHASE II • DEL SCHOOL SIZE (CLOSE OTHER SCHOOL)

1. NEW CLASSROOM PODS - PERM. STRUCTURES (REMOVE PORTABLES)
2. LANDSCAPED OUTDOOR PODS.
3. TECHNOLOGY & LABS

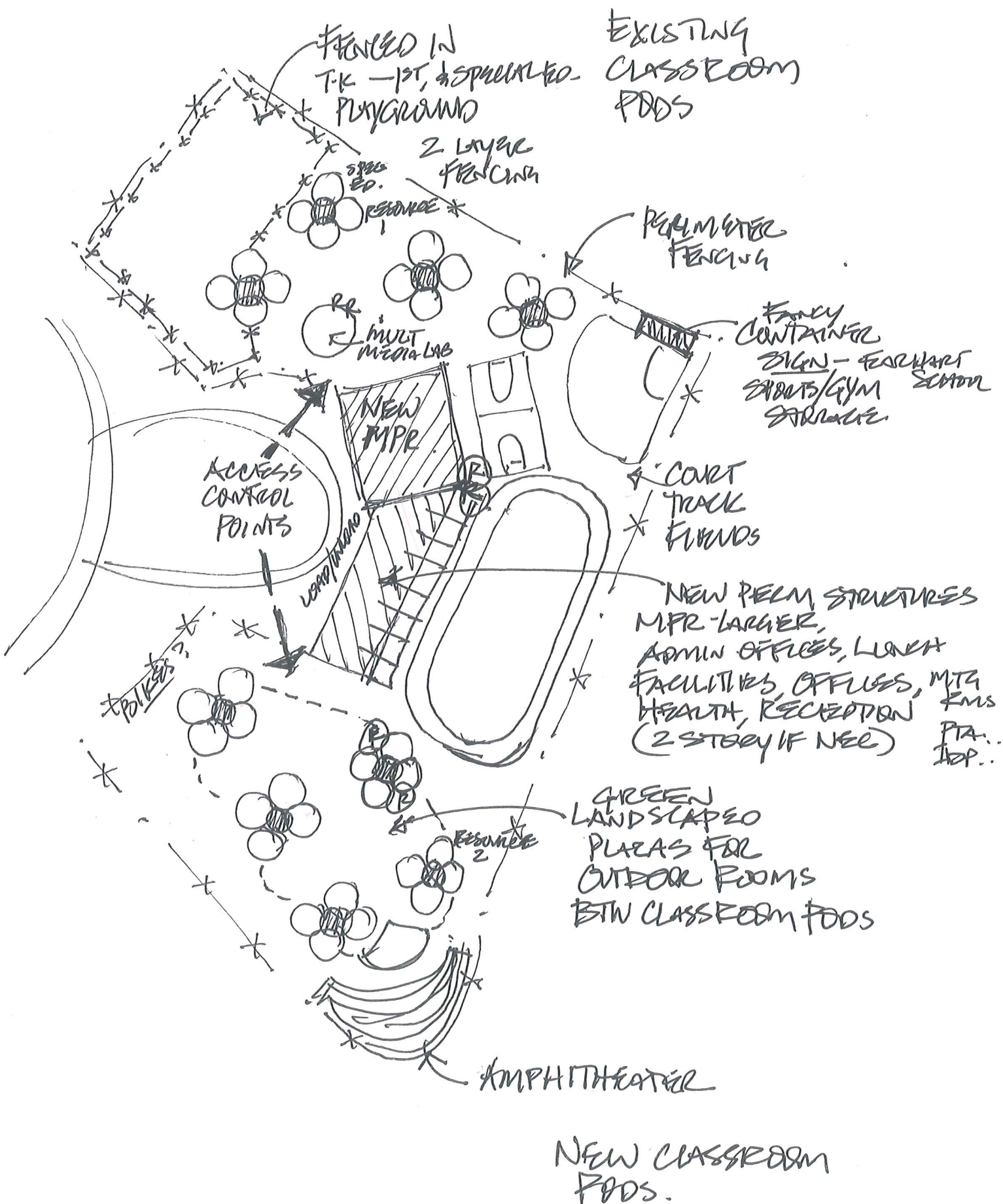
PHASE III

1. MPR & ADMIN. BLDG - PERM STRUCTURE
2. MEDIA CTR / LIBRARY - C REMODELING ADMIN BLDG.

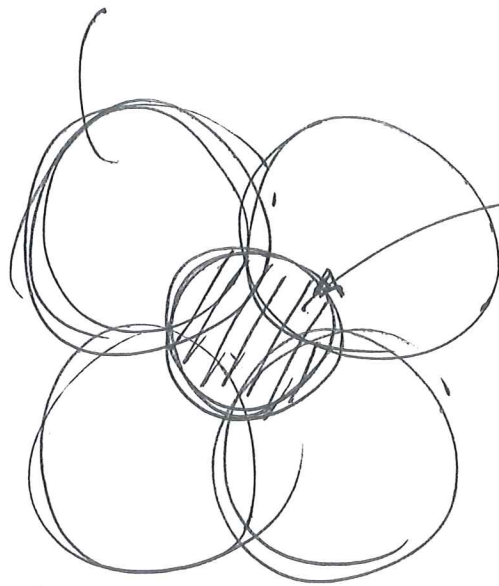
(AFTER SCHOOL
CAMP CARE

POST. PHASE III)

PART OF PERM
BLDG PLANNING



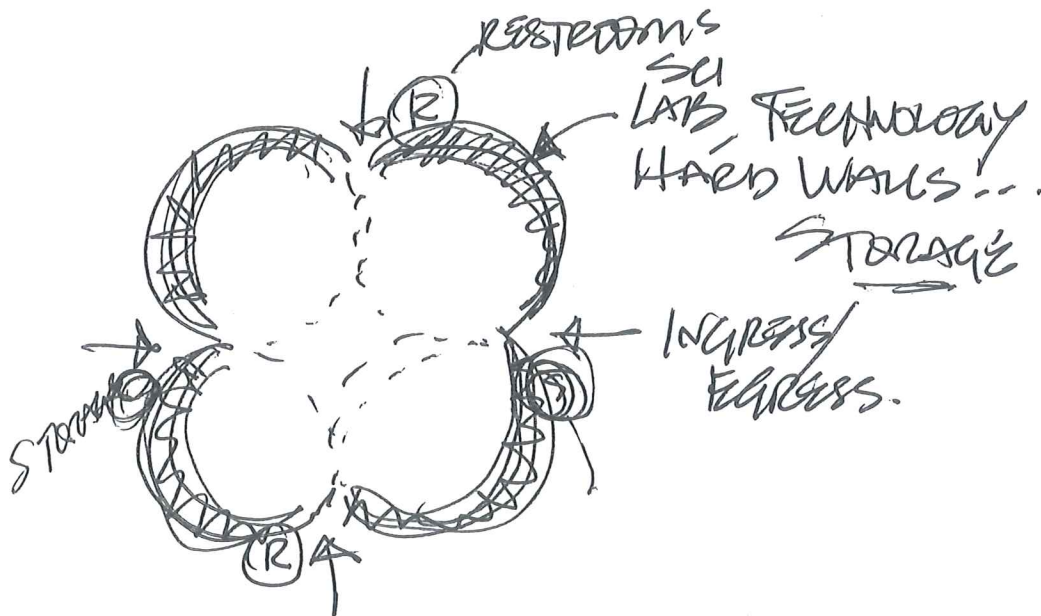
CLASSROOMS



SMALL
GROUP MEETING
SPACES

TEACHER
COLLABORATION
SPACE

CLASSROOM PODS



FLEXIBLE/ADAPTABLE - COLLABORATIVE
CLASSROOM PODS/SPACES.