

# Ruby Bridges Elementary School Modernization

Measure I Bond Project

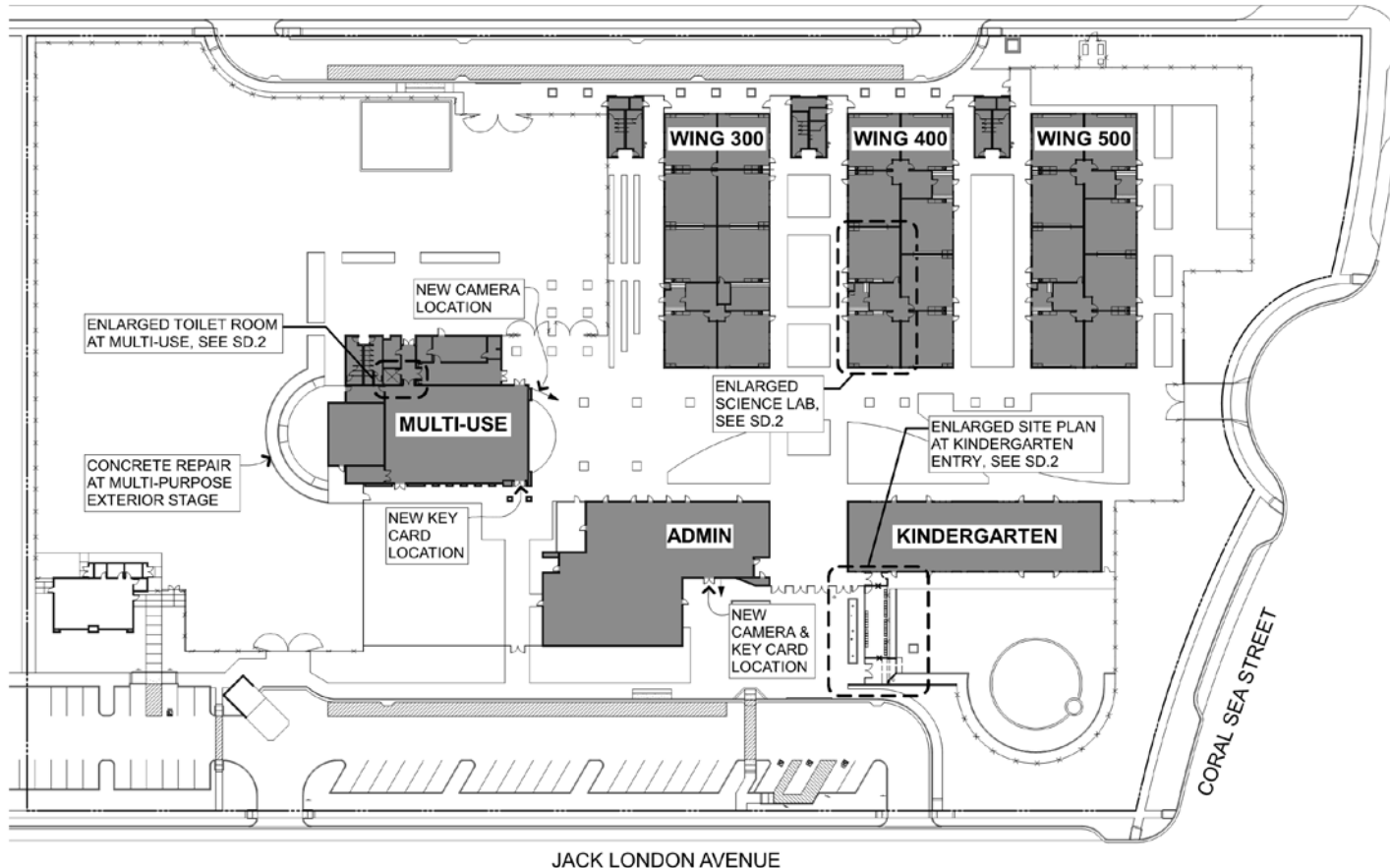
Board Schematic Design Presentation

May 22, 2017

ALAMEDA UNIFIED SCHOOL DISTRICT

# Ruby Bridges Elementary School Modernization

ROBERT LOUIS STEVENSON AVENUE



CAMPUS SITE PLAN

SCALE: 1" = 30'

## GENERAL NOTES

- REPLACE ALL DOOR LOCKS WITH NEW SECURITY LOCKS AT ALL SPACES TO BE OCCUPIED BY PEOPLE.
- PROVIDE DATA DROPS FOR NEW CAMERA & CARD KEY AT ADMIN AND MPR ENTRY'S, SEE ELECTRICAL NARRATIVE.
- MULTI-PURPOSE EXTERIOR STAGE: STAGE PLATFORM IS NONCOMPLIANT WHERE ADJACENT RAMP EXCEEDS 6 INCH TO GRADE. ADD CONCRETE CURB WITH ANTI-SKATE INSERTS.
- DAYCARE PORTABLE: CONNECTION TO EXISTING SDDI NORTH OF DAYCARE PORTABLE, SEE CIVIL NARRATIVE.
- LEAPS PORTABLES: CONNECTION TO EXISTING 12" STORM DRAIN SOUTH OF LEAPS PORTABLES, SEE CIVIL NARRATIVE.
- ALL EXISTING FLUSH IN-GROUND LIGHTS SHALL BE DISCONNECTED, REMOVED AND SEALED. (VERIFY QUANTITY)
- REPLACE DAMAGED COVER OF WEATHERPROOF DUPLEX RECEPTACLES WITH WHILE-IN-USE TYPE COVER, SEE ELECTRICAL NARRATIVE.
- ENTRANCE INTO KINDERGARTEN PLAY YARD IS AWKWARDLY LOCATED AND CAUSES CONGESTION DURING DROP OFF AND PICK UP. RELOCATE GATE AT KINDERGARTEN PLAYGROUND.
- ADD SOME WALL MOUNTED LUMINAIRES ON THE SOUTH WALL OF THE RECEPTION-ADMIN BUILDING, SEE ELECTRICAL NARRATIVE.
- PROVIDE EXTERIOR LIGHTING ON UNDERSIDE OF THE COVERED WALK WAYS FOR PATH OF EGRESS. UTILIZE EXISTING FLUSH IN-GROUND LIGHTING CIRCUIT AND CONTROLS, SEE ELECTRICAL NARRATIVE.
- REPLACE EXISTING PHONE SYSTEM WITH DISTRICT STANDARD VOIP, SEE ELECTRICAL NARRATIVE.
- REPLACE EXISTING BELL, CLOCK, AND SPEAKER SYSTEM WITH DISTRICT STANDARD VOIP, SEE ELECTRICAL NARRATIVE.

# Ruby Bridges Elementary School Modernization

## PROJECT HIGH LIGHTS:

### PHASE 1:

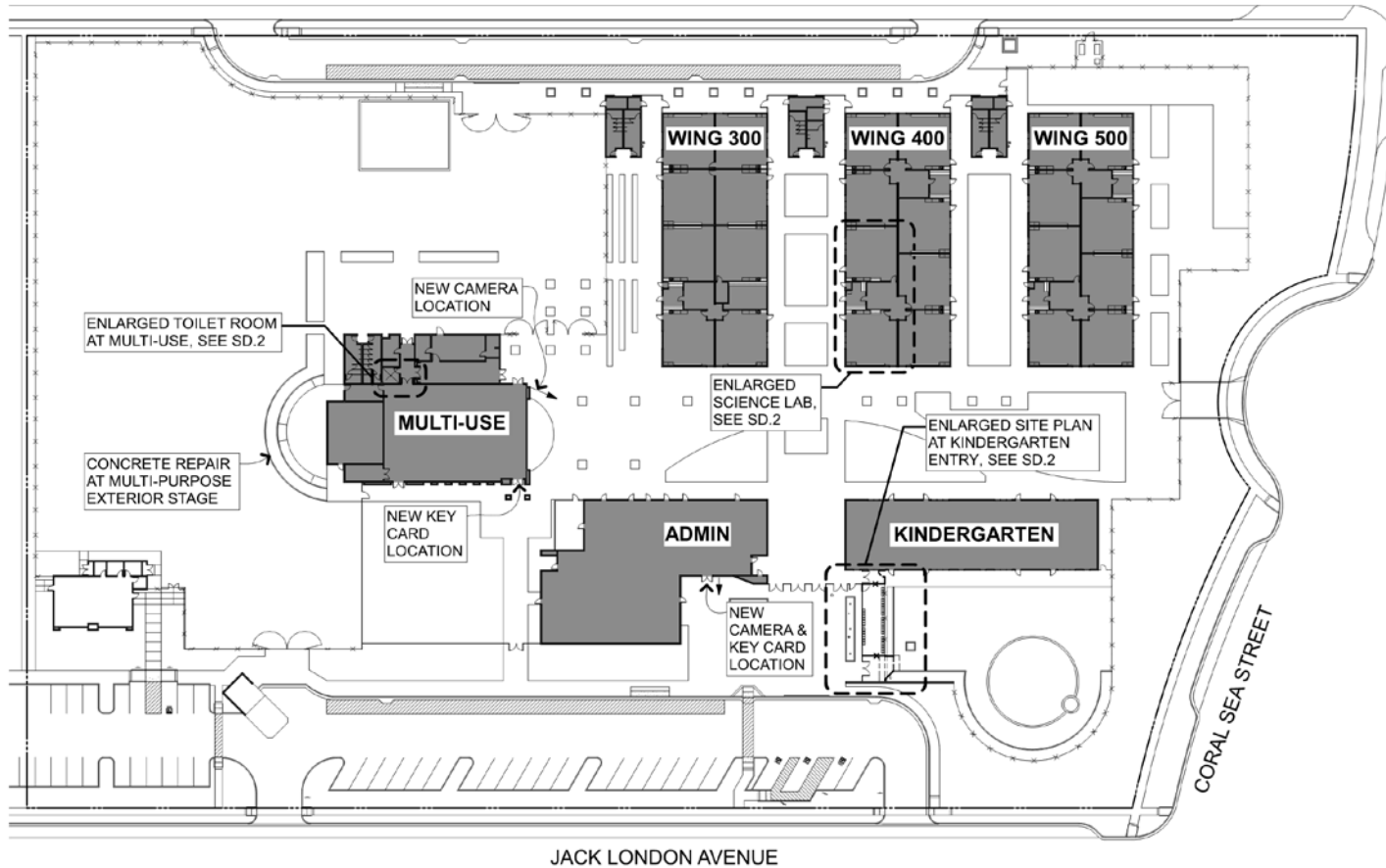
- REMODEL 2 CLASSROOMS – ONE FOR SCIENCE
- PROVIDE AN INTERIOR TOILET ROOM AT MPR
- IMPROVE SITE ACCESSIBILITY AT KINDERGARTEN

### PHASE 2:

- REPLACE ALL DOOR LOCKS WITH SECURITY LOCKS
- INSTALL CAMERAS AND CARD KEYS AT PRIMARY ENTRIES
- REPLACE PHONE SYSTEM WITH NEW VOIP SYSTEM
- REPLACE CLOCK/BELL/SPEAKER SYSTEM WITH NEW
- IMPROVE SITE LIGHTING

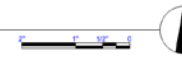
# Ruby Bridges Elementary School Modernization

ROBERT LOUIS STEVENSON AVENUE

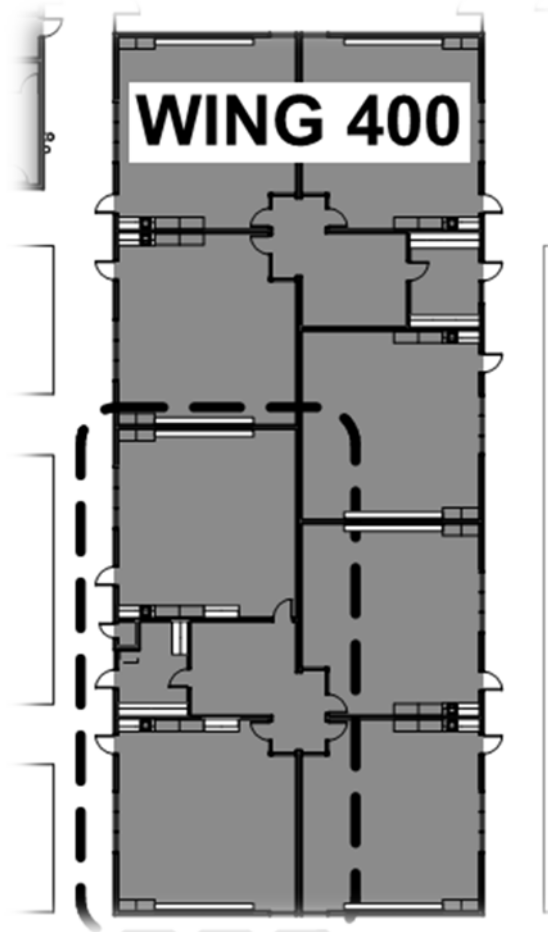


CAMPUS SITE PLAN

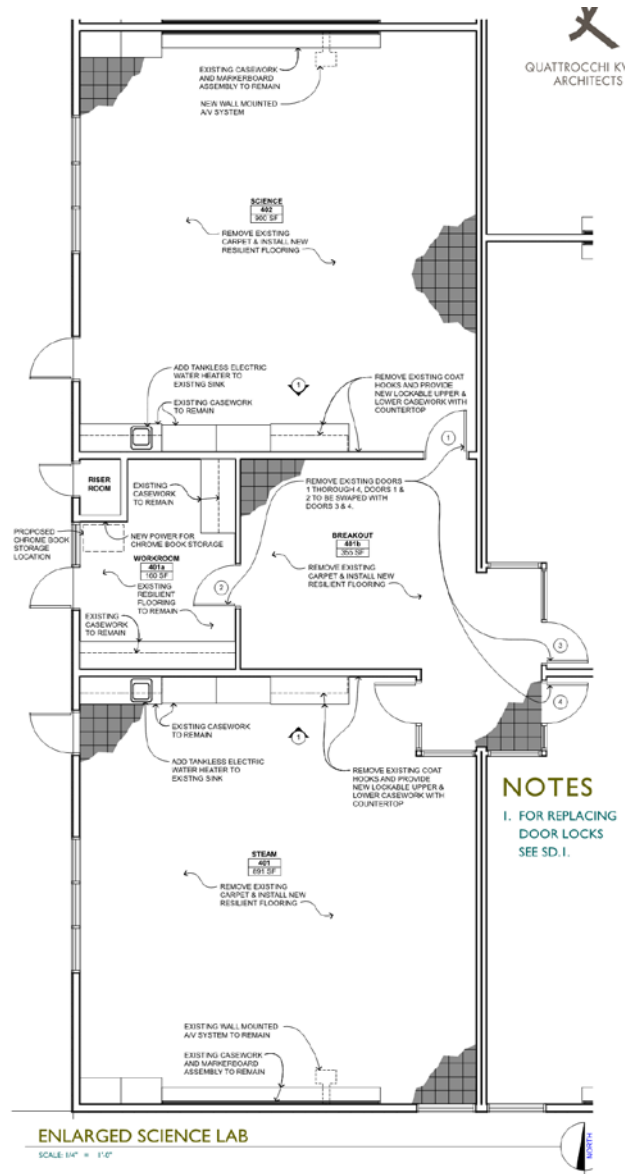
SCALE 1" = 30'



# Ruby Bridges Elementary School Modernization



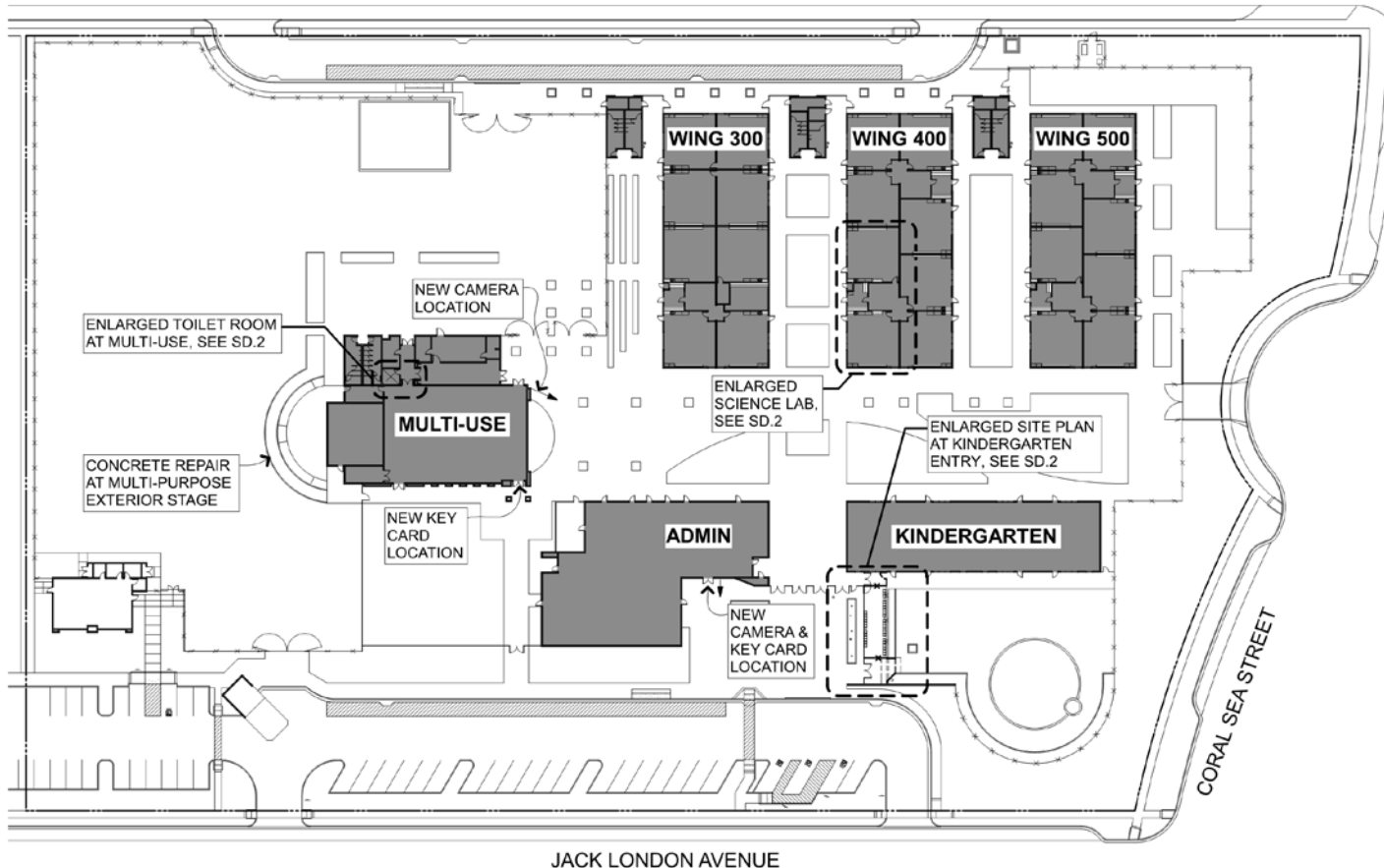
CLASSROOM REMODEL



## CLASSROOM REMODEL

# Ruby Bridges Elementary School Modernization

ROBERT LOUIS STEVENSON AVENUE



CAMPUS SITE PLAN

SCALE: 1" = 30'

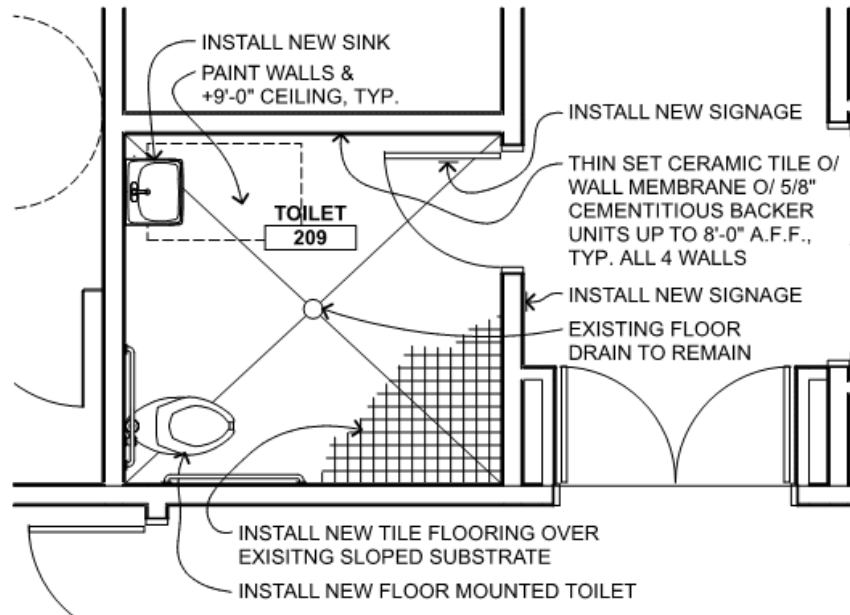
# Ruby Bridges Elementary School Modernization



NEW TOILET ROOM AT MPR



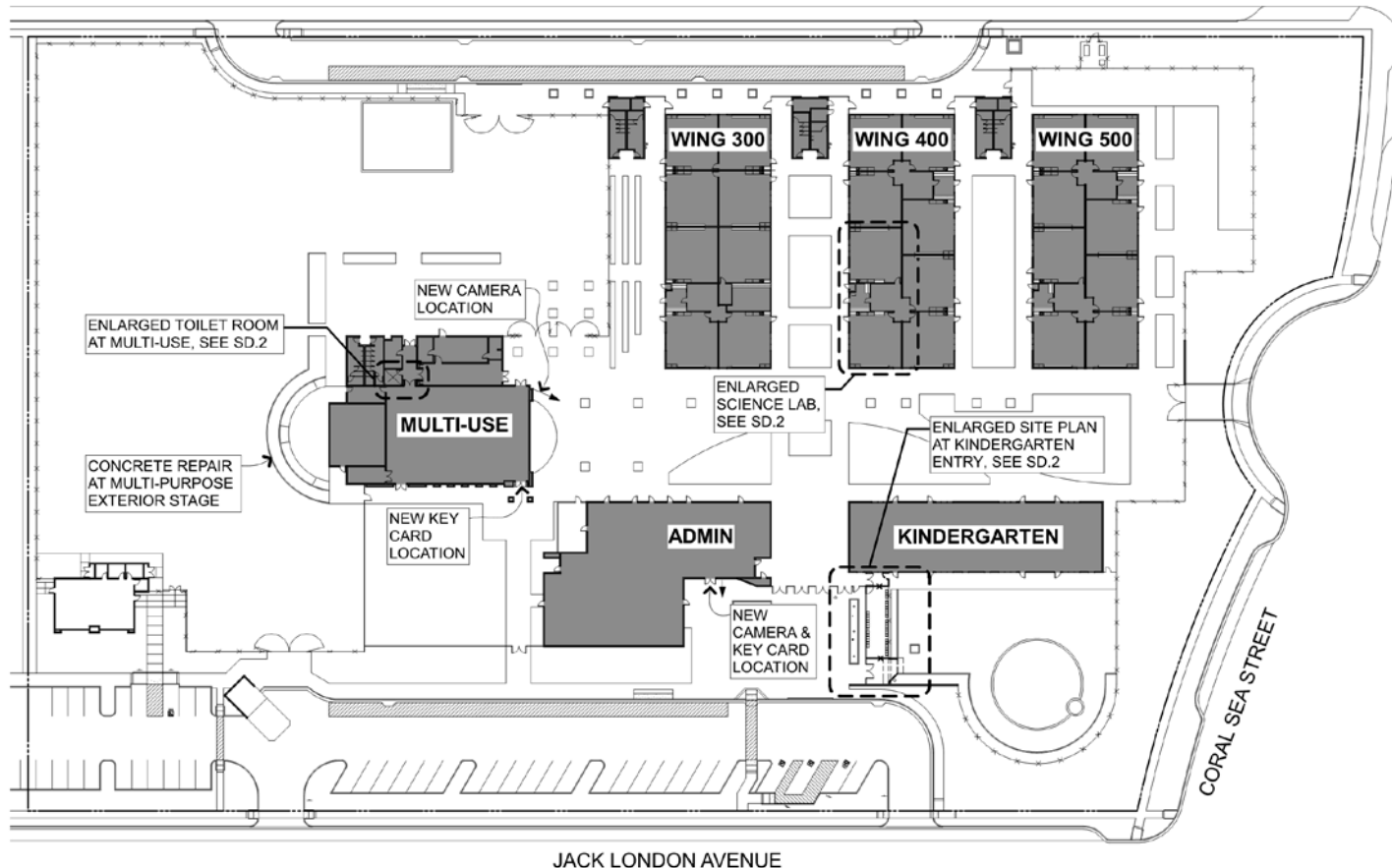
# Ruby Bridges Elementary School Modernization



## NEW TOILET ROOM AT MPR

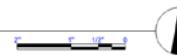
# Ruby Bridges Elementary School Modernization

ROBERT LOUIS STEVENSON AVENUE

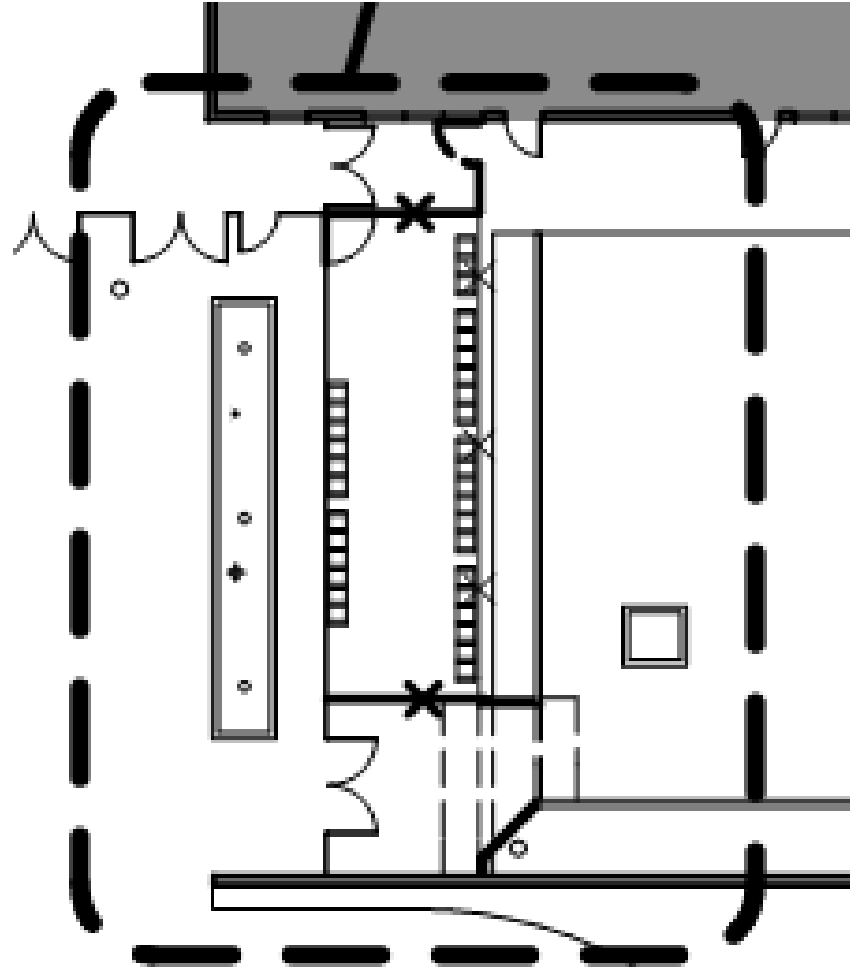


CAMPUS SITE PLAN

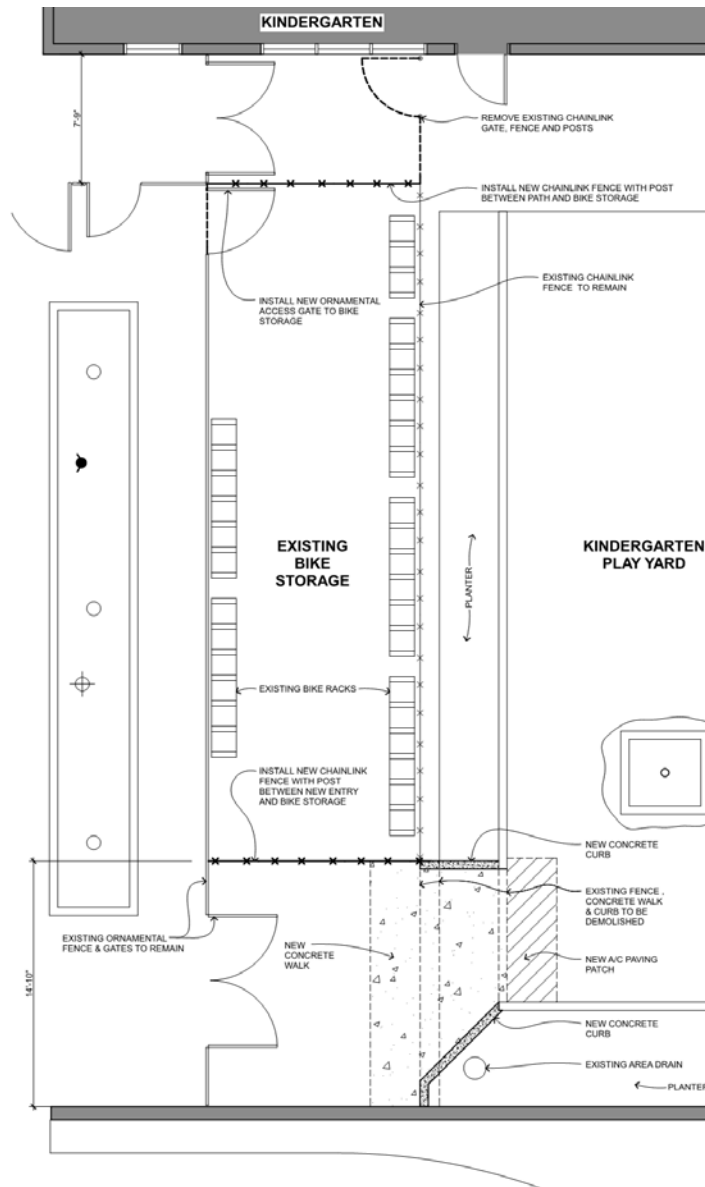
SCALE: 1" = 30'



# Ruby Bridges Elementary School Modernization



IMPROVE ACCESSIBILITY AT KINDERGARTEN



## IMPROVE ACCESSIBILITY AT KINDERGARTEN



QUATTROCCHI KWOK  
ARCHITECTS

# Ruby Bridges Elementary School Modernization

## PROJECT BUDGET

Campus Budget (2014 Implementation Plan B)	\$1,300,000
Escalation through 2016 only (5% annually) per approved bond budget	\$0
<b>Total Project Budget</b>	<b>\$1,300,000</b>

*Minus Soft Costs (20% of Total Project Budget)* *\$260,000*

**Current Construction Budget** **\$1,040,000**

## PROJECT COSTS

Construction Projects	Construction Timeline	escalated to year of construction	Notes
<b>PHASE 1</b>			
Remodel two (2) Classrooms	2018	\$384,985	<i>From SD estimate</i>
Provide interior toilet room in MPR	2018	\$69,111	<i>From SD estimate</i>
Improve site accessibility	2018	\$199,425	<i>From SD estimate</i>
<b>Phase 1 Estimate Subtotal</b>		<b>\$653,521</b>	
<b>PHASE 2</b>			
Replace all door locks with security locks	2018	\$70,000	<i>allowance</i>
Install cameras and card key and primary entries	2018	\$10,000	<i>allowance</i>
Replace phone system with VOIP system	2018	\$130,000	<i>allowance</i>
Replace clocks, bells and speaker system	2018	\$90,000	<i>allowance</i>
Improve site lighting	2018	\$20,000	<i>allowance</i>
Wiring (Project does NOT include wiring for phones and clocks)	2018	\$110,000	<i>allowance</i>
<b>Phase 2 Estimate Subtotal</b>		<b>\$430,000</b>	
Cost Impact of PLA (figured at 10%)		\$43,000	
<b>Phase 2 Total Cost w/PLA</b>		<b>\$473,000</b>	
<b>Overall Construction Projects Estimate Total</b>		<b>\$1,126,521</b>	

**(\$86,521)**

# Ruby Bridges Elementary School Modernization

QUESTIONS?



ALAMEDA UNIFIED SCHOOL DISTRICT