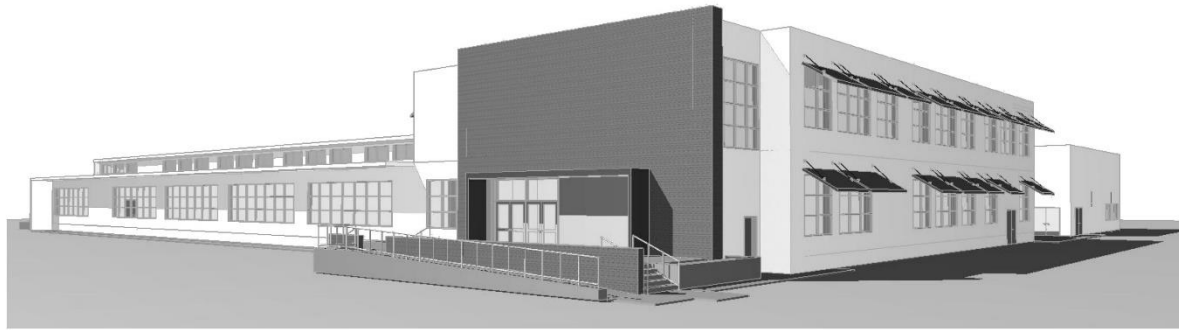


Paden Elementary School

Measure I Bond Project

Schematic Design Board Presentation for Phase 1

November 15, 2016



QUATTROCCHI KWOK
ARCHITECTS



Goals for Todays Presentation

1. Present Final Schematic Design Plans
2. Review Budget and construction timeline



Scope of work included in Phase 1 Schematic Design as presented today:

Classroom Modernization:

- New operable windows at classrooms for temperature regulation and ventilation*
- New Window awnings outside of classrooms to control solar heat gain
- Remove carpet from classrooms and repair or replace existing resilient flooring as required*
- Ventilation improvements to Kindergarten and TK toilet rooms*
- Window blinds to reduce glare. Possibly translucent glazing at clerestories in lieu of blinds*
- Rain canopies over the kindergarten exterior doors*
- New accessible concrete path of travel to lower play area*
- Refurbish one Portable Building

**Priorities established by Paden Site Committee*

Safety and Security:

- New Classroom Door hardware
- New Fencing as required
- Exterior and interior emergency lighting
- New fire extinguishers
- Select Structural improvements

Technology and Communication:

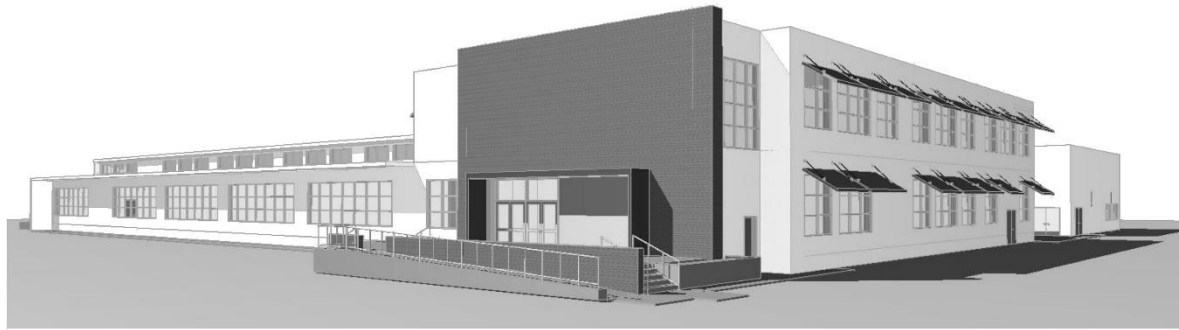
- Provide Infrastructure for wall mounted AV Technology
- Improve distribution for power and data
- Improve Clock/Bell/Speaker/Phone (VoIP) systems

Additional Items in current scope:

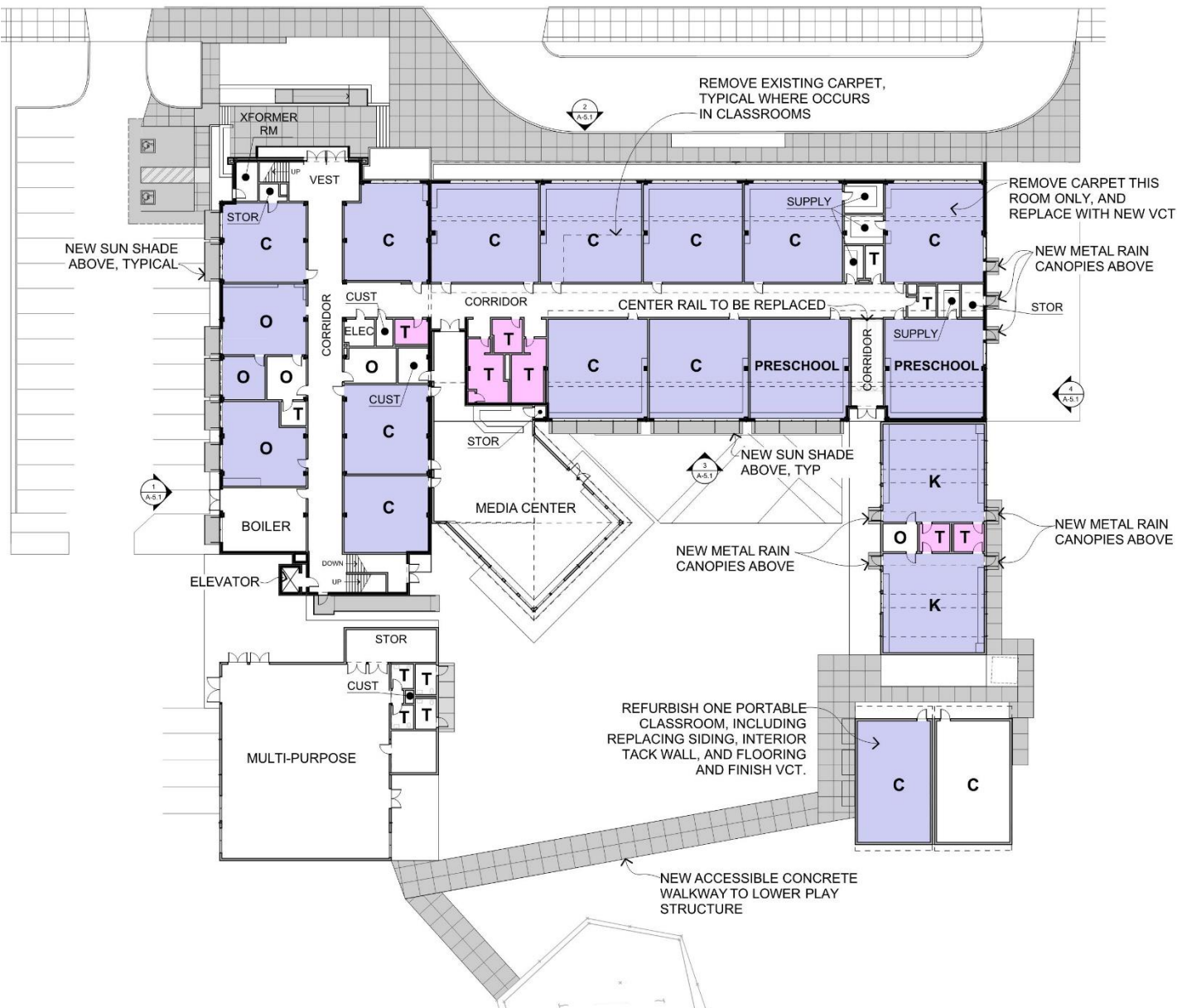
- DSA/Code required Exterior path of travel upgrades
- DSA/Code required Minor Toilet Room upgrades

Paden Elementary School

Measure I Bond Project Final Schematic Design Plans for Phase 1



Building Improvements – First Floor







ARCHITECTURAL GENERAL NOTES:

1. INSTALL NEW WINDOWS AND WINDOW SHADES AT ALL CLASSROOM WINDOWS.
2. REMOVE CARPETS FROM CLASSROOMS.
3. INSTALL NEW DOOR HARDWARE AT CLASSROOMS.
4. INSTALL NEW RAIN CANOPIES OVER EXTERIOR DOORS AS SHOWN ON PLAN.

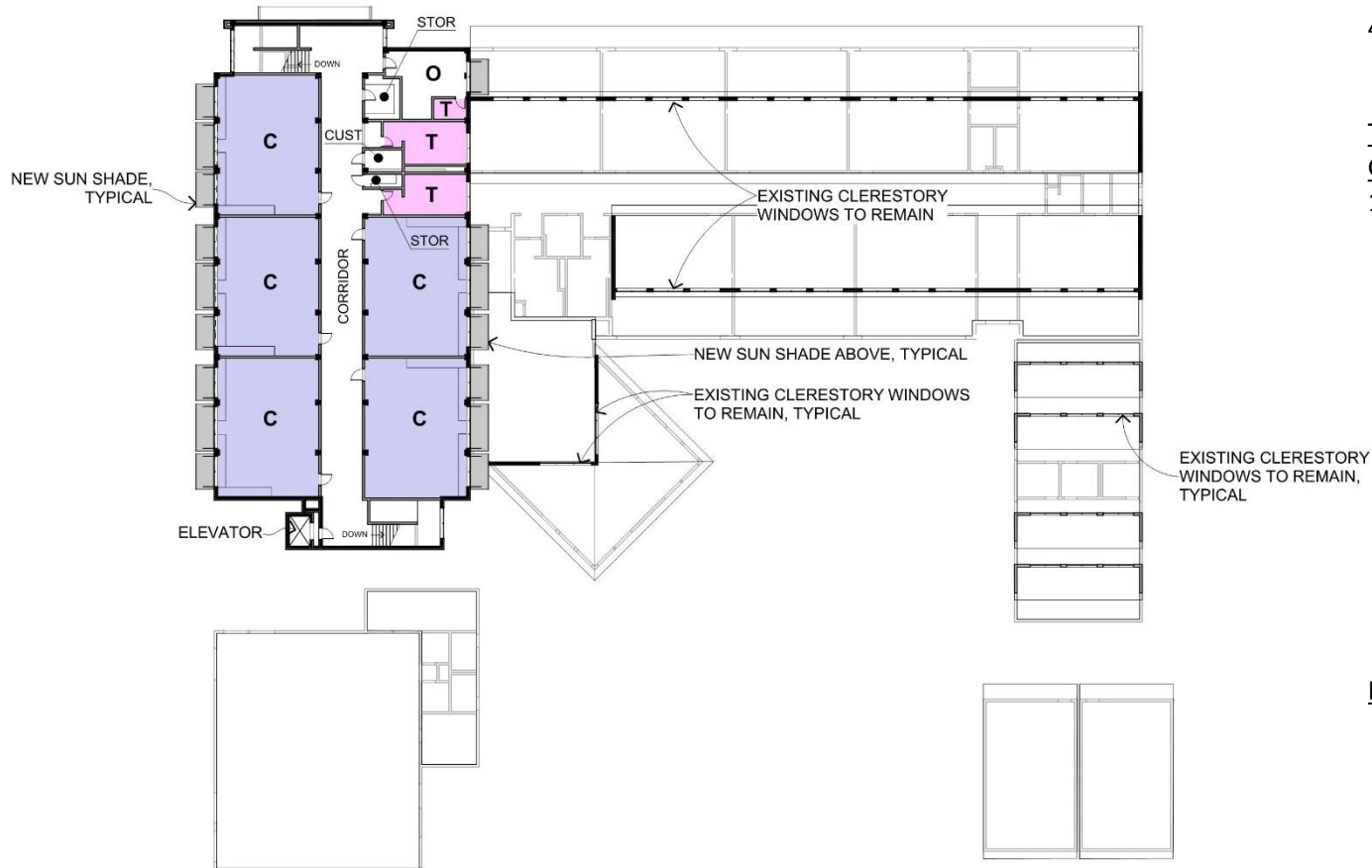
TECHNOLOGY & COMMUNICATION
GENERAL NOTES:

1. INSTALL NEW **INFRASTRUCTURE**
IN EACH CLASSROOM FOR:
 - SHORT THROW PROJECTORS @ TEACHING WALLS (1 PER CLASSROOM)
 - 2 CEILING MOUNTED SPEAKERS FOR SOUND AMPLIFICATION
 - 2 A/V CONTROL PANELS
 - 4 DATA DROPS
 - 1 WI-FI HUB
 - 8 DUPLEX OUTLETS, 2 PER WALL
 - (N) CLOCK / BELL / SPEAKER

LEGEND:

-  CLASSROOM OR OFFICE WITH NEW WINDOWS
-  TOILET ROOM TO RECEIVE ACCESSIBILITY UPGRADES
-  REFURBISHED PORTABLE CLASSROOM BUILDING
-  NEW SITE WORK TO PROVIDE ACCESSIBILITY UPGRADES AND WINDOW SHADING

Building Improvements – Second Floor



ARCHITECTURAL GENERAL NOTES:

1. INSTALL NEW WINDOWS AND WINDOW SHADES AT ALL CLASSROOM WINDOWS.
2. REMOVE CARPETS FROM CLASSROOMS.
3. INSTALL NEW DOOR HARDWARE AT CLASSROOMS.
4. INSTALL NEW RAIN CANOPIES OVER EXTERIOR DOORS AS SHOWN ON PLAN.

TECHNOLOGY & COMMUNICATION GENERAL NOTES:

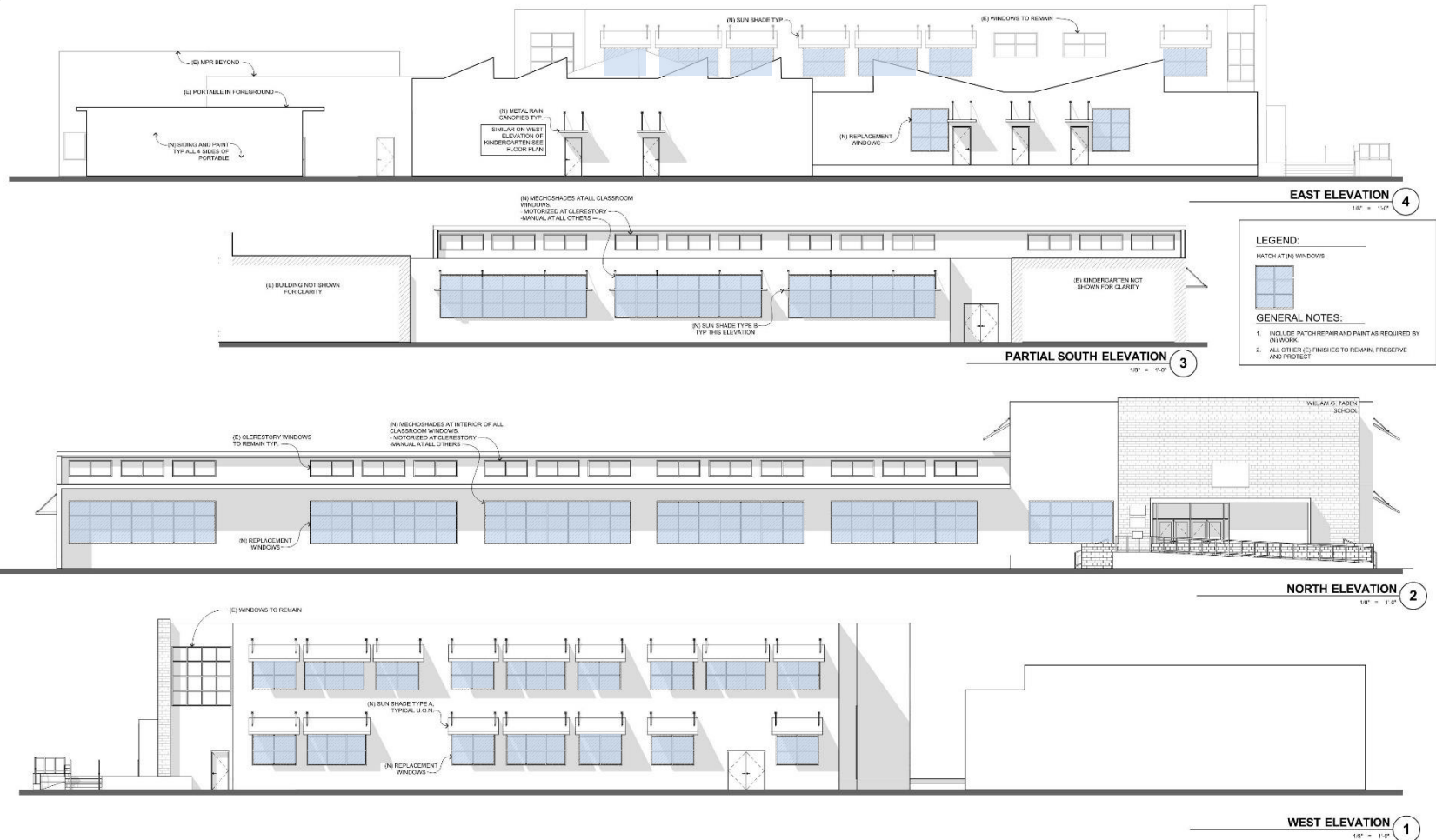
1. INSTALL NEW **INFRASTRUCTURE** IN EACH CLASSROOM FOR:
 - SHORT THROW PROJECTORS @ TEACHING WALLS (1 PER CLASSROOM)
 - 2 CEILING MOUNTED SPEAKERS FOR SOUND AMPLIFICATION
 - 2 A/V CONTROL PANELS
 - 4 DATA DROPS
 - 1 WI-FI HUB
 - 8 DUPLEX OUTLETS, 2 PER WALL
 - (N) CLOCK / BELL / SPEAKER

LEGEND:

- CLASSROOM OR OFFICE WITH NEW WINDOWS
- TOILET ROOM TO RECEIVE ACCESSIBILITY UPGRADES
- REFURBISHED PORTABLE CLASSROOM BUILDING
- NEW SITE WORK TO PROVIDE ACCESSIBILITY UPGRADES AND WINDOW SHADING

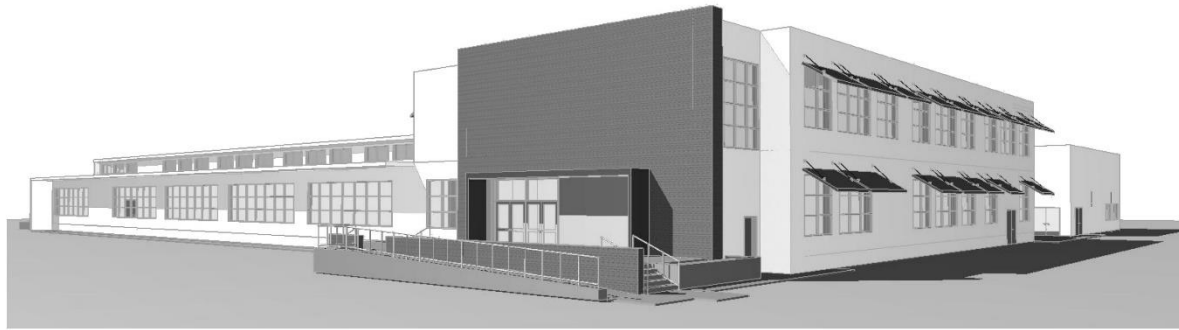
Window and Shade Control Improvements

 = New Windows with operable upper panes



Paden Elementary School

Measure I Bond Project Final Schematic Design - Budget Review



Project Budget, Estimate and Schedule

Paden Elementary School

Project Cost Summary Update

Updated: August 2016

Campus Budget (all 2014 Implementation Plan B Projects)	\$3,700,000
<i>Escalation through 2016 only (5% annually) per approved bond budget</i>	<i>\$379,250</i>
Total Project Budget	\$4,079,250

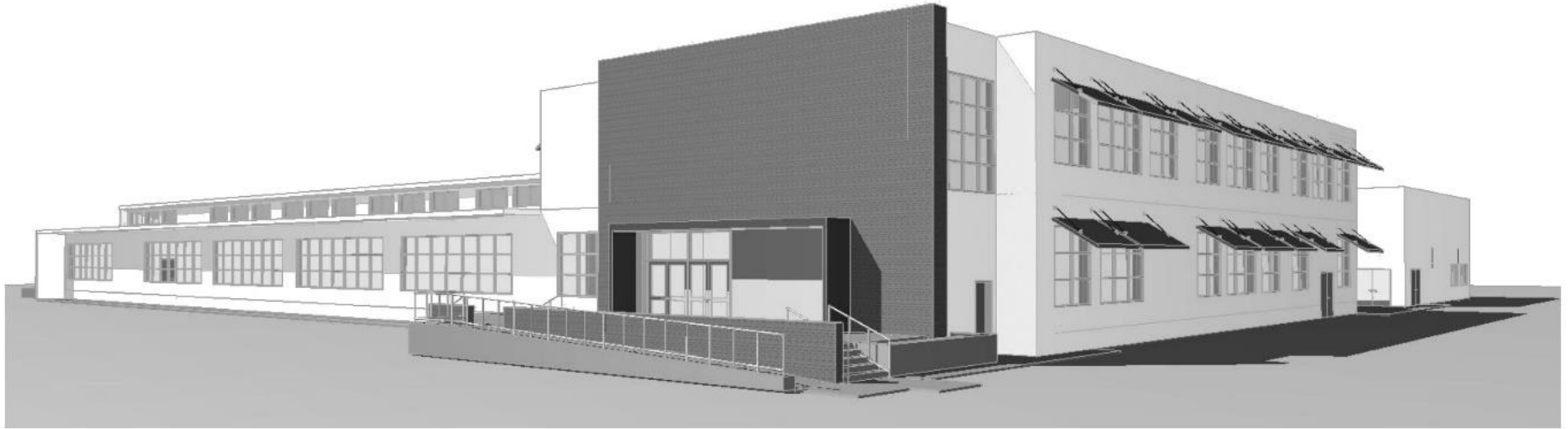
Soft Costs (30% of Total Project Budget) \$1,223,775

Current Construction Budget \$2,855,475

Construction Projects	Construction Timeline	Phase 1 Cost/Allowance escalated to year of construction	Phase 2 Cost/Allowance escalated to year of construction
Classroom Modernization	2018	\$1,561,743	
Safety / Security Upgrades	2018	\$163,362	
Technology / Communication Upgrades	2018	\$207,240	
Refurbish One Existing Portable Building	2018	\$46,678	
New Science Classroom Building	TBD		\$503,999
Construction Projects Estimate Subtotal		\$1,979,022	\$503,999
Cost Impact of PLA (figured at 15%)		\$296,853	\$75,600
<i>subtotal</i>		<i>\$2,275,875</i>	<i>\$579,599</i>
Construction Projects Estimate Total		\$2,855,475	

Notes:

1. Construction project estimates include 20% design contingency
2. Construction project estimates do not include cost for construction contingency, FF&E, or hazardous materials
3. "Soft Costs" include Change Order contingency and fees for Architect and Consultants, Construction Management, DSA, and Inspection and Testing.



Thank You



QUATTROCCHI KWOK
ARCHITECTS

