



Street Safety Improvements at Alameda K-12 Schools

City of Alameda, October 20, 2021

Per the [Alameda Vision Zero policy](#),¹ the City of Alameda (“City”) aims to eliminate traffic fatalities and severe injuries, and places safety as the highest priority in transportation efforts. To work towards this goal, the City prioritizes street safety investments on [High Injury Corridors](#),² stretches of road with the highest densities of fatal and injury crashes. With over 20 K-12 schools in Alameda, a number of schools are on or near High Injury Corridors. Alameda crash data also finds that young people ages 10-24 are disproportionately vulnerable to fatal and severe crashes. Finally, all children should be safe walking and biking to school.

This document outlines the infrastructure improvements the City has completed, planned, or proposed near 22 individual K-12 schools in Alameda. It also reviews the school street safety programming the City supports and leads, as well as the eight actions in the proposed Vision Zero Action Plan that aim to improve school street safety.

Contents

School Street Safety in the Vision Zero Action Plan.....	3
Current Programming for Student Safety on City Streets	4
Infrastructure Improvements for School Street Safety	5
1. Academy of Alameda	6
2. (Amelia) Earhart Elementary School	7
3. Alameda High School	9
4. Alameda Science and Technology Institute (ASTI) High School.....	10
5. Bay Farm Elementary School	11
6. The Child Unique Montessori School.....	12
7. Edison Elementary School.....	13
8. Encinal Junior and Senior High School	17
9. Frank Otis Elementary School	18
10. Franklin Elementary School	19
11. Island High School	22
12. Lincoln Middle School	23
13. Love Elementary School.....	24

¹ Vision Zero Policy: <https://www.alamedaca.gov/files/assets/public/departments/alameda/transportation/vision-zero/signed-vision-zero-resolution15605.pdf>

² High Injury Corridors: www.alamedaca.gov/VisionZero#section-4

14.	Maya Lin School	26
15.	Nea Community Learning Center / Alameda Community Learning Center (ACLC)	28
16.	Paden Elementary School	30
17.	The Phillips Academy	31
18.	Rising Star Montessori School.....	32
19.	Ruby Bridges Elementary School	33
20.	Saint Joseph Elementary School / Saint Joseph Notre Dame High School	34
21.	Saint Philip Neri School	35
22.	Will C. Wood Middle School	37
Attachment A.....		39
1.	Academy of Alameda SSA Exhibit with City Notes.....	40
2.	(Amelia) Earhart Elementary School SSA Exhibit with City Notes.....	41
7.	Edison Elementary School SSA Exhibit with City Notes	42
10.	Franklin Elementary School SSA Exhibit with City Notes	43
13.	Love Elementary School SSA Exhibit with City Notes	44
14.	Maya Lin School SSA Exhibit with City Notes.....	45
15.	Nea Community Learning Center / ACLC SSA Exhibit with City Notes.....	46
22.	Will C. Wood Middle School SSA Exhibit with City Notes	47

School Street Safety in the Vision Zero Action Plan

The proposed [Vision Zero Action Plan](#)³ envisions a city where people all ages and abilities can travel safely using any mode, and traffic deaths and severe injuries are eliminated by 2035. The Transportation Commission will consider endorsing the Action Plan on October 27, 2021, and staff aim to seek adoption by City Council by the end of 2021. The Vision Zero Task Force, which guided development of the Action Plan, included Susan Davis from the Alameda Unified School District (AUSD) and an AUSD parent and volunteer Safe Routes to School Champion. All Action Plan documents are available at www.AlamedaCA.gov/VisionZero#section-2.

In its analysis of 2009-2018 crash data, the Action Plan found that young people ages 10-24 were overrepresented in fatal and severe injury crashes compared to other age groups. Furthermore, 63% of crashes involving younger victims (ages 18 or younger) occurred within a quarter mile of a school while only 38% of Alameda's streets are within a quarter mile of a school.

Accordingly, the proposed Action Plan contains a wide-ranging series of actions specific to street safety around schools:

- **Lower speeds in school zones.** Implement School Zone program with 15 or 20 mph speed limits on as many streets as possible per the provisions of the California Vehicle Code. (action 4.14)
- **School street safety assessments.** Conduct school safety assessments at all public and private schools, develop implementation plans for improvements up to one quarter mile from the schools. Implement the plans focusing first on the improvements within 600 feet of the schools. (4.15)
- **AUSD policy.** Encourage the Alameda Unified School District to adopt a policy that supports incorporating traffic safety education into curriculum and the implementation of Safe Routes to Schools-supportive infrastructure. (3.6)
- **Safety plans for drop-off and pick-up.** Aid AUSD and other schools in developing and implementing plans to organize and standardize drop-off/pick-up at all public and private schools. (4.8)
- **Pedestrian safety education.** Provide a comprehensive pedestrian safety program to all public and private schools, targeted to appropriate grade level. (3.10)
- **Bicyclist safety education.** Provide a comprehensive bicycle safety education program to all public and private schools, targeted to 5th graders. (3.11)
- **Traffic enforcement near schools.** Conduct targeted enforcement actions along high injury corridors and in school zones. (4.5)
- **Vision Zero Advisory Committee representation.** Form a Vision Zero Advisory Committee to provide guidance on Vision Zero Action Plan implementation. The action specifies that members should include community members who can speak from the perspectives of youth and of parents of school-age children. AUSD is be one of the partner agencies offered seats. (1.2)

³ Action Plan: https://www.alamedaca.gov/files/assets/public/departments/alameda/transportation/vision-zero/alamedavisionzeroactionplan_10-5-2021.pdf

Current Programming for Student Safety on City Streets

While the City's primary role in improving street safety for students relates to designing and maintaining nearby streets and intersections, the City is involved in leading or supporting key programmatic efforts as well. These include:

- **Alameda County Safe Routes to School (SR2S) Programming.** The City supports the Alameda County Safe Routes to Schools program, which provides educational and promotional resources to schools and works with parent volunteers to encourage families to walk, bike, carpool, and take transit to school. [17 AUSD schools](#) are currently enrolled in the program. Any public school may participate in the program which provides [many fully-funded offerings](#), including:
 - Pedestrian safety education rodeos
 - On-campus bicyclist safety education rodeos
 - Free bicycle tune-up events
 - Technical support for International Walk & Roll to School Day, Bike to School Day, and the Golden Sneaker contest
- **Bicyclist safety education in schools.** The City contracts with Cycles of Change, a non-profit, to provide bicycle safety education in multiple schools each year, where there is interest. This supplements the Countywide SR2S program education, helping the City work toward reaching its target of educating all fifth graders in public and private schools each year.
- **Family cycling workshops.** This fiscal year, the City will be establishing a contract with Bike East Bay to supplement their regular offerings of bicycle education workshops for guardians with their children, to offer these workshops on a regular basis in Alameda.
- **Safety Town field trips.** The City's Fire Department, with support from APD and the Kiwanis Club, has historically conducted in-person "Safety Town" field trip events each fall to teach traffic and fire safety to all kindergarteners in Alameda. Last year, due to COVID, the event was done virtually [with videos](#), and this year it is also being provided virtually. In the future, the City hopes to again provide the event in person, depending on staffing capacity.
- **Crossing Guards.** The Alameda Police Department (APD) manages a contract to provide crossing guards at schools in Alameda. Currently, 20 guards are provided at intersections near nine schools.
- **Enforcement arounds schools.** As of fall 2021, APD is piloting an ongoing traffic enforcement program that educates drivers and students on traffic safety, and issues warnings and citations for the top violations that most endanger children. The program provides enforcement every day of the week on a rotating basis between all schools, as staffing and other calls permit. Additionally, at the start of each school year, for several weeks, APD rotates between all Alameda schools to provide enhanced enforcement of traffic law violations.
- **Bike Festival.** This annual event (suspended during COVID) provides a bike rodeo, bike info booths and activities, prizes, and helmet giveaways, typically in the spring to support safe bicycling by children. The location rotates between school campuses around Alameda. In 2020, the City began to fund the County SR2S staff to plan and manage this event, which had until then been dependent on parent volunteers.
- **Walking & Biking to School Maps for individual schools.** Since at least 2009, the City has created, updated and provided printed copies of "Suggested Routes for Walking & Biking to School" for every public elementary and middle school in Alameda. A companion cover sheet includes safety tips for traveling to school by all modes. In recent years, these maps have mainly been distributed electronically, via the [City's web page](#), the AUSD web page, and individual

school web pages, and school mailings. The City is working on updating all of the maps to a new, easier to read format, created several years ago.

- **Safety educational materials.** In 2021, the City collaborated with SR2S and AUSD staff to produce a flyer on “How to Drive Safely in School Zones,” which is posted on the City’s web page, was shared with AUSD, and is available in three language (English, Chinese and Spanish). Recently eight safety graphics with messages, 4 targeting drivers and 4 targeting high school students, were developed with SR2S and AUSD staff, for the City and AUSD to use to promote safe walking and biking via social media.
- **Online resources.** The City’s *Get Around Alameda* web page includes a [“Getting to School” section](#) with the school maps and other safety materials.

Infrastructure Improvements for School Street Safety

The City implements street design improvements around schools through major corridor improvement such as those on Otis Drive and Central Ave; ongoing maintenance; bicycle and pedestrian improvements; the High Injury Corridor Daylighting Project; and the Safe Routes to School Safety Assessment Implementation. The City also implemented a series of improvements in 2019 and 2020 after a series of child-involved collisions in fall 2019.

The countywide SR2S program provides one to two School Safety Assessments (SSAs) each year to public Alameda schools, with key participation from AUSD and the City. The City provides recommendations to the SR2S program on which schools to work with. Since 2016, eight SSA’s have been completed.⁴ In the 2021/2022 school year, SSAs will be completed Alameda High School (pending school staff approval) and one other school. Ruby Bridges Elementary School deferred their planned SSA until next year. The City has implemented many of the related recommendations and has plans to implement more, as noted in the school street safety improvement tables in the next section.

The City’s goal is to complete an SSA for every public and private K-12 school in Alameda. The [2021-2023 Capital Budget](#)⁵ includes \$368,000 to conduct School Safety Assessments (SSAs) and implement recommendations. Some of this funding may be used to conduct more than one or two SSAs per year, as offered by SR2S, as well as reaching private schools.

For more resources on Alameda’s efforts to design and build safer streets, see:

- Building Safer Streets: www.alamedaca.gov/SaferStreets
- Traffic safety projects: www.alamedaca.gov/SaferStreets#section-4
- Vision Zero Capital Projects List:
<https://www.alamedaca.gov/files/assets/public/departments/alameda/transportation/vision-zero/appendix-d-vision-zero-capital-projects-list.pdf>

⁴ Academy of Alameda, Earhart Elementary School, Edison Elementary, Franklin Elementary, Love Elementary, Maya Lin School, Nea Community Learning Center, and Wood Middle

⁵ Capital Budget: <http://www.alamedaca.gov/2021CIP>



1. Academy of Alameda

401 Pacific Ave

- School Safety Assessment: February 2016
- Suggested walking and biking routes to school: [https://www.alamedaca.gov/files/assets/public/departments/alameda/transportation/getting-around/sr2s - academy of alameda school - 2015.pdf](https://www.alamedaca.gov/files/assets/public/departments/alameda/transportation/getting-around/sr2s-academy-of-alameda-school-2015.pdf)

Table 1. Academy of Alameda Safety Improvements

Academy of Alameda				
Past Improvements (last 5 years)				
No.	Location	Limits	Improvement	Notes
1	Ralph Appezzato Memorial	Ferry Point to Webster	Built the Cross Alameda Trail, a .9 mile off-street walking and biking path connecting to the trail through Jean Sweeney Park. Eventually this will be part of a four-mile low-stress walking and biking facility from the Miller-Sweeney (Fruitvale) Bridge to the Bay.	www.alamedaca.gov/CAT
2	Pacific	Fourth	<ul style="list-style-type: none"> • Installed 2 high-visibility crosswalks. • Installed advance yield lines and Yield Here to Pedestrians Signs. • Advance stop bar. 	SSA recommendations; On-Call Striping
3	Main	North of Pacific	To calm high speeds on this street, reconfigured it from four travel lanes to two lanes, a two-way left turn lane, and bike lanes.	
Planned Improvements (approved and in design or construction phase)				
No.	Location	Limits	Improvement	Notes
-	-	-	-	-
Proposed Improvements				
No.	Location	Limits	Improvement	Notes
1	Pacific	Marshall to Main	In 2022, the City will conduct a public outreach and design process to plan a major street reconfiguration to improve safety on the Lincoln corridor, including Marshall and Pacific west of Marshall.	Webpage TBA. Will be linked here: www.alamedaca.gov/SaferStreets#section-4
2	Pacific	Fourth	<ul style="list-style-type: none"> • Median modifications. • Evaluate traffic patterns and turning movements to consider prohibiting U-turns. • Potentially use the off-street loading zone. 	SSA recommendations; proposed work for Lincoln/Marshall/Pacific Corridor Improvements
3	Pacific	Marshall	<ul style="list-style-type: none"> • Relocate stop sign. • Install 1 high-visibility crosswalk. • Curb extension with curb ramp. 	SSA recommendations; proposed work for Lincoln/Marshall/Pacific Corridor Improvements

4	Buena Vista Ave	Poggi	RRFB system.	SSA recommendations
5	Pacific	Loading Zone	Training and facilitating of loading zone.	SSA recommendations
6	Poggi	Ralph Appezza to to Buena Vista/5 th	Proposed as a bike lane in the draft Active Transportation Plan recommendations.	www.activealameda.org/Recommendations#section-3
7	Pacific	Marshall to Park	Proposed to be a traffic-calmed bicycle boulevard in the draft Active Transportation Plan recommendations. This would include various interventions to slow down auto speeds and make the street safer for people walking and biking.	www.activealameda.org/Recommendations#section-3

2. (Amelia) Earhart Elementary School

400 Packet Landing Rd

- School Safety Assessment: January 2020
- Suggested walking and biking routes to school: [https://www.alamedaca.gov/files/assets/public/departments/alameda/transportation/getting-around/sr2s - amelia earhart elementary school - 2015.pdf](https://www.alamedaca.gov/files/assets/public/departments/alameda/transportation/getting-around/sr2s-amelia-earhart-elementary-school-2015.pdf)

Table 2. (Amelia) Earhart Elementary School Safety Improvements

(Amelia) Earhart Elementary School				
Past Improvements (last 5 years)				
No.	Location	Limits	Improvement	Notes
1	Robert Davey Jr	Pudding-stone	Replaced faded street name sign.	www.alamedaca.gov/2019SafetyImprovements
2	Packet Landing	Centre Ct	<ul style="list-style-type: none"> • Striped bulb-outs. • Installed daylighting. • Installed wheel stops. 	On-Call Striping
3	Packet Landing	Robert Davey Jr	Installed leading pedestrian interval at traffic light.	
Planned Improvements (approved and in design or construction phase)				
No.	Location	Limits	Improvement	Notes
1	Robert Davey Jr	Packet Landing	Improve bicycle ramp at NE corner.	SSA recommendations; TSR Support Task Orders

Proposed Improvements				
No.	Location	Limits	Improvement	Notes
1	Purcell Dr	Parking Lot	<ul style="list-style-type: none"> • Relocate the bus zone north of the parking lot curb. • Replace the current bus zone with a white curb for loading. • Remove no-left-turn signs from the exit driveway. • Training and facilitating for the exit driveway during loading times. 	SSA recommendations
2	Packet Landing	Brittany Dr to Robert Davey Jr	<ul style="list-style-type: none"> • Traffic calming circle and/or other alternatives. • Install no-U-turn signage. • Refresh the centerline stripe. • Long-term: At Brittany Dr, install a new high-visibility crosswalk with curb ramps south of the intersection when a new sidewalk is installed. • Long-term: At Brittany Dr, upgrade existing crosswalk north of the intersection to a high-visibility crosswalk, install advance yield markings, and upgrade the existing curb ramps to current standards. • Long-term: Build a sidewalk along the west side of Packet Landing Rd at sidewalk gaps, and widen sidewalk where it is narrow. 	SSA recommendations
3	Packet Landing	Robert Davey Jr	<ul style="list-style-type: none"> • Consider un-actuating the signal so the pedestrian phase activates automatically each traffic cycle during school arrival and dismissal hours. • Tighten the curb radii at all four corners. • Upgrade the existing curb ramps to be bi-directional. • Install a new high-visibility crosswalk across the eastern approach and remove the no-pedestrian-crossing signage. • Install advance stop lines at the north, west, and east approaches. • Formalize existing informal "Park and Walk" location on Sea Bridge and/or encourage use as an alternative drop-off location. • Monitor and evaluate the signal timing at this intersection. Reevaluate signal timing after each school circulation change. Consider pedestrian scramble phase and/or a right-turn pocket on the E leg. 	SSA recommendations
4	Robert Davey Jr	Island Dr	<ul style="list-style-type: none"> • Refresh 2 existing crosswalks. • Install curb extensions or tighten the curb radii at NW and SW corners. • Long Term: Upgrade the traffic signal equipment to current standards. • Long Term: Install a leading pedestrian interval and bicycle signals. 	SSA recommendations
5	Robert Davey Jr	Island to Packet Landing	Proposed as a buffered bike lane in the draft Active Transportation Plan recommendations.	www.activealameda.org/Recommendations#section-3

6	Island Dr	Doolittle to Mecartney	Proposed as a regular bike lane in the draft Active Transportation Plan recommendations.	www.activealameda.org/Recommendations#section-3
---	-----------	------------------------	--	--

3. Alameda High School

2200 Central Ave

Table 3. Alameda High School Safety Improvements

Alameda High School				
Past Improvements (last 5 years)				
No.	Location	Limits	Improvement	Notes
1	Park	Lincoln to Clinton	Commercial Streets Program includes bollards and bulb-outs for safer street crossings. The Alameda Ave closure/outdoor dining plaza has provided a popular space for students at lunch while reducing vehicle conflicts in the area.	www.AlamedaCA.gov/CommercialStreets
2	Central	Willow to Pearl	Installed daylighting.	High Injury Corridor Daylighting Project: www.alamedaca.gov/HICdaylighting
3	Central	Walnut	Installed a high visibility crosswalk.	
4	Oak	San Jose	Converted intersection to an all-way stop.	On-Call Striping
5	Oak	Lincoln to Clement	Installed sharrows and signage.	Oak St Sharrow Gap On-Call Striping
6	Park	Lincoln, Santa Clara, and Central	Installed leading pedestrian interval at traffic lights.	
Planned Improvements (approved and in design or construction phase)				
No.	Location	Limits	Improvement	Notes
1	Encinal	Broadway to Sherman	In 2022, Caltrans will implement a major street reconfiguration to encourage safer speeds, make pedestrian crossings safer, and add bicycle lanes.	Details: https://gather.cdmsmith.com/v/y2qm2KdR1wO
2	Oak	Powell to Blanding	Install daylighting.	High Injury Corridor Daylighting Project: www.alamedaca.gov/HICdaylighting

Proposed Improvements				
No.	Location	Limits	Improvement	Notes
1	Alameda	Walnut to Central	Proposed to be a traffic-calmed bicycle boulevard in the draft Active Transportation Plan recommendations. This would include various interventions to slow down auto speeds and make the street safer for people walking and biking.	www.activealameda.org/Recommendations#section-3

4. Alameda Science and Technology Institute (ASTI) High School

555 Atlantic Ave

Table 4. ASTI High School Safety Improvements

ASTI High School				
Past Improvements (last 5 years)				
No.	Location	Limits	Improvement	Notes
1	Ralph Appezzato Memorial	Ferry Point to Webster	Built the Cross Alameda Trail, a .9 mile off-street walking and biking path connecting to the trail through Jean Sweeney Park. Eventually this will be part of a four-mile low-stress walking and biking facility from the Miller-Sweeney (Fruitvale) Bridge to the Bay.	www.alamedaca.gov/CrossAlamedaTrail
2	Atlantic	Constitution	Installed leading pedestrian interval at traffic light.	
3	Webster	Atlantic, Willie Stargell,	Installed leading pedestrian interval at traffic lights.	
4	Willie Stargell	Fifth, Mariner Square	Installed leading pedestrian interval at traffic lights.	
5	5 th	Singleton	Installed leading pedestrian interval at traffic light.	
Planned Improvements (approved and in design or construction phase)				
No.	Location	Limits	Improvement	Notes
1	Atlantic	Const-Itution	Signal improvements to make crossing both directions easier for bicyclists. Add bike signal. Planned for 2022.	www.alamedaca.gov/CrossAlamedaTrail
2	Ralph Appezzato Memorial	Webster	Signal improvements to make crossing both directions easier for bicyclists. Add bike signal. Planned for 2022.	www.alamedaca.gov/CrossAlamedaTrail
Proposed Improvements				
No.	Location	Limits	Improvement	Notes
-	-	-	-	-

5. Bay Farm Elementary School

200 Aughinbaugh Way

Suggested walking and biking routes to school: [https://www.alamedaca.gov/files/assets/public/departments/alameda/transportation/getting-around/sr2s - bay farm elementary school - 2015.pdf](https://www.alamedaca.gov/files/assets/public/departments/alameda/transportation/getting-around/sr2s-bay-farm-elementary-school-2015.pdf)

Table 5. Bay Farm Elementary School Safety Improvements

Bay Farm Elementary School				
Past Improvements (Last 5 Years)				
No.	Location	Limits	Improvement	Notes
1	Robert Davey Jr Dr	Channing Way	Installed 25 MPH marking on westbound approach.	On-Call Striping
2	Kofman Pkwy	Aughinbaugh Way	Striping and daylighting improvements.	2020 Resurfacing Program
3	Dublin Way	Tralee Ln to Ulster Pl	<ul style="list-style-type: none"> Installed daylighting at midblock crossing. Modified signage at midblock crossing. 	On-Call Striping
Planned Improvements (approved and in design or construction phase)				
No.	Location	Limits	Improvement	Notes
-	-	-	-	-
Proposed Improvements				
No.	Location	Limits	Improvement	Notes
1	Aughinbaugh Way	Seaview Pkwy to Mecartney Rd	Proposed to be a buffered bike lane in the draft Active Transportation Plan recommendations.	www.activealameda.org/Recommendations#section-3

6. The Child Unique Montessori School

Preschool-6th grade program, 1400 6th Street

Table 6. The Child Unique Montessori School Safety Improvements

The Child Unique Montessori School				
Past Improvements (last 5 years)				
No.	Location	Limits	Improvement	Notes
1	Santa Clara	6th St to Pacific	Installed a Slow Street.	www.AlamedaCA.gov/SlowStreets
2	Santa Clara	6th St	<ul style="list-style-type: none"> Refreshed 2 existing high-visibility crosswalks on E and W legs. Installed 2 high-visibility crosswalks on N and S legs. 	On-Call Striping
3	Webster	Santa Clara, Central	Installed leading pedestrian interval at traffic lights.	
Planned Improvements (approved and in design or construction phase)				
No.	Location	Limits	Improvement	Notes
1	Santa Clara	Fourth St to Sixth St	Daylighting.	Slow Streets Alameda
2	Central	Sherman to Main	In 2023, the City will implement a major street reconfiguration to encourage safer speeds, make pedestrian crossings safer, and add bicycle facilities. This includes a two-way, protected bikeway on Central from Main to Eighth. Regular bicycle lanes will be added on both sides of the Central between Eighth and Sherman.	www.AlamedaCA.gov/Central
Proposed Improvements				
No.	Location	Limits	Improvement	Notes
1	5 th St	Central to Buena Vista	Proposed to be a traffic-calmed bicycle boulevard in the draft Active Transportation Plan recommendations. This would include various interventions to slow down auto speeds and make the street safer for people walking and biking.	www.activealameda.org/Recommendations#section-3
2	Lincoln	Broadway to Marshall	In 2022, the City will conduct a public outreach and design process to plan a major street reconfiguration to improve safety on Lincoln Ave. This would include safety improvements at 9 th and Lincoln.	Webpage TBA. It will be linked here: www.alamedaca.gov/SaferStreets#section-4

7. Edison Elementary School

2700 Buena Vista Ave

- School Safety Assessment: May 2019
- Suggested walking and biking routes to school: [https://www.alamedaca.gov/files/assets/public/departments/alameda/transportation/getting-around/sr2s - edison elementary school - 2015.pdf](https://www.alamedaca.gov/files/assets/public/departments/alameda/transportation/getting-around/sr2s-edison-elementary-school-2015.pdf)

Table 7. Edison Elementary School Safety Improvements

Edison Elementary School				
Past Improvements (last 5 years)				
No.	Location	Limits	Improvement	Notes
1	Versailles	Fernside to Calhoun	Installed a Slow Street.	www.SlowStreetsAlameda.org
2	Fernside Ave	Harvard	<ul style="list-style-type: none"> • Installed rapid flashing beacons, new striping, and 2 transverse crosswalks at east and signage west legs. • Installed advance stop bar at east and west legs. • Installed a high-visibility crosswalk at south leg. • Installed yield lines for south leg crossing. 	SSA recommendations
3	Lincoln Ave	Versailles Ave	<ul style="list-style-type: none"> • Refreshed all 4 crosswalk striping. • Installed daylighting. • Installed advance stop bars. • Refreshed centerline striping. • Replaced “4-way” plaque with current standard “all-way” plaque. 	www.alamedaca.gov/2019SafetyImprovements
4	Northwood Dr	Cambridge Dr / Buena Vista Ave	<ul style="list-style-type: none"> • Restriped 1 crosswalk. • Restriped centerlines. • Installed daylighting. • Added a new crosswalk on west side. • Installed advance stop bar. 	www.alamedaca.gov/2019SafetyImprovements
5	Fernside Blvd	Versailles Ave	<ul style="list-style-type: none"> • Restriped 2 crosswalks. • Restriped faded bulb-out striping. • Restriped faded bike lane line. • Installed daylighting. • Added a new crosswalk. • Installed advance stop bar. • Replaced ped paddle. 	www.alamedaca.gov/2019SafetyImprovements

			<ul style="list-style-type: none"> • Replaced faded and incorrect bike route signage with bike lane signage. • Replaced Neighborhood Watch sign. 	
6	Tilden Way	Buena Vista Ave	<ul style="list-style-type: none"> • Refreshed 1 crosswalk. • Added ladder hatching. • Refreshed limit lines. • Installed YIELD marking. • Refreshed/installed centerline striping. • Replaced faded signage. • Re-marked BIKE LANE and arrow markings. • Restriped faded bike lane lines. • Painted yellow curb around northside median. 	www.alamedaca.gov/2019SafetyImprovements
7	Buena Vista Ave	Versailles Ave	<ul style="list-style-type: none"> • Refreshed 4 existing high-visibility crosswalks. • Installed no U-turn sign for EB Buena Vista Ave. • Installed daylighting. 	SSA recommendations; On-Call Striping
8	Lincoln Ave	Versailles Ave	<ul style="list-style-type: none"> • Refreshed 4 existing high-visibility crosswalks. • Installed advance stop bar. • Installed daylighting. 	SSA recommendations
9	Lincoln Ave	Gibbons Dr	<ul style="list-style-type: none"> • Refreshed 4 existing high-visibility crosswalks. • Installed advance stop bars. • Installed daylighting. 	SSA recommendations
10	Lincoln Ave	Broadway	<ul style="list-style-type: none"> • Installed KEEP CLEAR markings and signage. • Refreshed 1 existing high-visibility crosswalk. • Refreshed STOP markings. • Installed 1 high-visibility crosswalk on S leg. • Installed 2 crosswalks on E and W legs. • Installed yield lines for N and S crossings. • Installed centerline striping on E and W approaches. 	On-Call Striping
11	Yosemite Ave	Moreland Dr	Installed stop signs, stop bars, and STOP legends on E and W legs.	On-Call Striping
12	Yosemite Ave	Cambridge Dr	Installed stop sign, stop bar, and STOP legend on W leg.	On-Call Striping
13	Versailles Ave	San Jose Ave to Central Ave	Installed sharrows.	On-Call Striping

14	Pearl St	Buena Vista, Lincoln	Installed daylighting.	On-Call Striping
15	Broadway	Buena Vista, Tilden	Installed leading pedestrian interval at traffic lights.	
Planned Improvements (approved and in design or construction phase)				
No.	Location	Limits	Improvement	Notes
1	Lincoln Ave	Park St to Fountain St	Daylighting.	High Injury Corridor Daylighting Project: www.alamedaca.gov/HICdaylighting
2	Santa Clara Ave	Park St to Grove St	Daylighting.	High Injury Corridor Daylighting Project: www.alamedaca.gov/HICdaylighting
Proposed Improvements				
No.	Location	Limits	Improvement	Notes
1	Pearl St	Edison Ct	<ul style="list-style-type: none"> • Extend existing loading zone. • Install school loading signs. • If no changes to existing loading zone, then install a high-visibility crosswalk with a curb ramp at the south leg. 	SSA recommendations
2	Lincoln Ave	Broadway	Install RRFB system.	SSA recommendations
3	Gibbons Dr	Northwood Dr / Southwood Dr	Install a neighborhood traffic circle and/or conduct a stop warrant analysis.	SSA recommendations
4	Gibbons Dr and Southwood Dr	East of Gibbons Dr / Northwood Dr / Southwood Dr Intersection	Consider speed cushions or speed humps.	SSA recommendations

5	Buena Vista Ave	Northwood Dr / Cambridge Dr	Consider converting the existing crosswalk at the south leg into a raised crosswalk.	SSA recommendations
6	Lincoln	Broadway to Marshall	In 2022, the City will conduct a public outreach and design process to plan a major street reconfiguration to improve safety on Lincoln Ave. This would include safety improvements at 9 th and Lincoln.	Webpage TBA. It will be linked here: www.alamedaca.gov/SaferStreets#section-4
7	Versailles	Fernside to Calhoun	Proposed to be a traffic-calmed bicycle boulevard in the draft Active Transportation Plan recommendations. This would include various interventions to slow down auto speeds and make the street safer for people walking and biking.	www.activealameda.org/Recommendations#section-3
8	Lincoln	High to Park	Proposed to be a traffic-calmed bicycle boulevard in the draft Active Transportation Plan recommendations.	www.activealameda.org/Recommendations#section-3
9	Gibbons	Fernside to Lincoln	Proposed to be a traffic-calmed bicycle boulevard in the draft Active Transportation Plan recommendations.	www.activealameda.org/Recommendations#section-3
10	Fernside	Thompson to Broadway	Bike lane proposed to be upgraded to a buffered bike lane in the draft Active Transportation Plan recommendations.	www.activealameda.org/Recommendations#section-3
11	Tilden	Fernside	Intersection will be improved as part of the Clement Avenue Extension/Tilden Way project, which will create a complete street connecting Clement to the Miller-Sweeney (Fruitvale) bridge.	https://www.alamedaca.gov/Departments/Planning-Building-and-Transportation/Transportation/Clement-Avenue-ExtensionTilden-Way

8. Encinal Junior and Senior High School

210 Central Ave

Table 8. Encinal Junior and Senior High School Safety Improvements

Encinal Junior and Senior High School				
Past Improvements (last 5 years)				
No.	Location	Limits	Improvement	Notes
1	Main St	North of Pacific	To calm high speeds on this street, reconfigured it from four motor vehicle lanes to two motor vehicle lanes plus bike lanes.	
2	Pacific	Central/Main	Installed leading pedestrian interval at traffic light.	
Planned Improvements (approved and in design or construction phase)				
No.	Location	Limits	Improvement	Notes
1	Central Ave	Sherman to Main	In 2023, the City will implement a major street reconfiguration to encourage safer speeds, make pedestrian crossings safer, and add bicycle facilities. This includes a two-way, protected bikeway on Central from Main to Eighth. Regular bicycle lanes will be added on both sides of the Central between Eighth and Sherman.	www.AlamedaCA.gov/Central
2	Central	3 rd /Taylor	In 2023, the City will install a roundabout at this intersection. Roundabouts reduce fatal crashes by 90%.	www.AlamedaCA.gov/Central
3	Central	4 th	Council approved a roundabout at this location; construction timing is dependent on funding acquisition.	www.AlamedaCA.gov/Central
4	Santa Clara Ave	Pacific Ave to Fourth St	Daylighting.	Slow Streets Alameda
Proposed Improvements				
No.	Location	Limits	Improvement	Notes
1	3 rd	Central to Ralph Appezato	Proposed to be a traffic-calmed bicycle boulevard in the draft Active Transportation Plan recommendations. This would include various interventions to slow down auto speeds and make the street safer for people walking and biking.	www.activealameda.org/Recommendations#section-3
2	Pacific	Marshall to Main	In 2022, the City will conduct a public outreach and design process to plan a major street reconfiguration to improve safety on the Lincoln corridor, including Marshall and Pacific west of Marshall.	Webpage TBA. Will be linked here: www.alamedaca.gov/SaferStreets#section-4

9. Frank Otis Elementary School

3010 Fillmore St

Suggested walking and biking routes to school: [https://www.alamedaca.gov/files/assets/public/departments/alameda/transportation/getting-around/sr2s - otis_school - 2015.pdf](https://www.alamedaca.gov/files/assets/public/departments/alameda/transportation/getting-around/sr2s_-_otis_school_-_2015.pdf)

Table 9. Frank Otis Elementary School Safety Improvements

Frank Otis Elementary School				
Past Improvements (last 5 years)				
No.	Location	Limits	Improvement	Notes
1	Versailles	Fernside to Calhoun	Installed a Slow Street.	www.SlowStreetsAlameda.org
2	High St	San Jose Ave	<ul style="list-style-type: none"> Upgraded 2 existing crosswalks on N and S legs to high-visibility crosswalks. Installed Ped Xing signs. Refreshed 2 existing crosswalks on E and W legs. Refreshed STOP markings. 	On-Call Striping
3	High St	Fillmore St	<ul style="list-style-type: none"> Refreshed 1 existing high-visibility crosswalk. Installed yield lines and signage. 	On-Call Striping
4	High St	Calhoun St	Refreshed 1 existing high-visibility crosswalk.	On-Call Striping
5	High St	Otis Dr	Installed leading pedestrian interval at traffic light.	
6	Calhoun St	Post St	<ul style="list-style-type: none"> Installed stop signs and STOP legends on N and S legs. Installed stop bar on S leg. 	On-Call Striping
7	Fillmore St	Court St	<ul style="list-style-type: none"> Relocated ADA parking. Installed daylighting. Refreshed 4 existing high-visibility crosswalks. 	On-Call Striping
Planned Improvements (approved and in design or construction phase)				
No.	Location	Limits	Improvement	Notes
1	Otis	Versailles	In early 2022, Caltrans will add flashing beacons and crosswalk striping improvements.	
2	Broadway	Calhoun	In early 2022, Caltrans will add flashing beacons and crosswalk striping improvements.	

Proposed Improvements				
No.	Location	Limits	Improvement	Notes
1	Otis	Fernside to Broadway	Caltrans is considering a street reconfiguration as part of an upcoming pavement resurfacing project.	
2	Court	Lincoln to Fillmore	Proposed to be a traffic-calmed bicycle boulevard in the draft Active Transportation Plan recommendations. This would include various interventions to slow down auto speeds and make the street safer for people walking and biking.	www.activealameda.org/Recommendations#section-3
3	Calhoun	Court to Versailles	Proposed to be a traffic-calmed bicycle boulevard in the draft Active Transportation Plan recommendations.	www.activealameda.org/Recommendations#section-3
4	Mound	Calhoun to Waterton	Proposed to be a traffic-calmed bicycle boulevard in the draft Active Transportation Plan recommendations.	www.activealameda.org/Recommendations#section-3
5	Versailles	Calhoun to Fernside	Proposed to be a traffic-calmed bicycle boulevard in the draft Active Transportation Plan recommendations.	www.activealameda.org/Recommendations#section-3

10. Franklin Elementary School

1433 San Antonio Ave

- School Safety Assessment: May 2017
- Suggested walking and biking routes to school: https://www.alamedaca.gov/files/assets/public/departments/alameda/transportation/getting-around/franklines_suggestedroutes_28sept2018.pdf

Table 10. Franklin Elementary School Safety Improvements

Franklin Elementary School				
Past Improvements (last 5 years)				
No.	Location	Limits	Improvement	Notes
1	San Jose	Morton to Oak	Installed a Slow Street.	www.SlowStreetsAlameda.org
2	Morton	San Jose to San Antonio	Installed a Slow Street.	www.SlowStreetsAlameda.org

3	San Antonio Ave	Paru St	<ul style="list-style-type: none"> • Restriped all 4 crosswalks. • Added ladder hatching to crosswalks. • Added advance stop bar. • Installed daylighting. 	www.alamedaca.gov/2019SafetyImprovements ; SSA recommendations
4	Santa Clara Ave	Bay St	<ul style="list-style-type: none"> • Refreshed southside crosswalk. • Added ladder hatching to northside and southside crosswalks. • Installed advance stop bars (NB, SB). • Re-marked STOP legends. • Installed daylighting. 	www.alamedaca.gov/2019SafetyImprovements
5	San Antonio Ave	Morton St to Paru St	<ul style="list-style-type: none"> • Restriped 5 crosswalks. • Re-marked SLOW SCHOOL XING markings. • Re-marked faded STOP legends. • Installed yield lines for both approaches at mid-block crosswalk. 	On-Call Striping; www.alamedaca.gov/2019SafetyImprovements
6	Central Ave	Morton St	<ul style="list-style-type: none"> • Installed 2 high-visibility crosswalks on west and east legs. • Installed 2 transverse crosswalks on north and south legs. • Installed advance stop bars for NB and SB approaches. • Installed ped xing signs on Central Ave. 	SSA recommendations; On-Call Striping
7	Central Ave	Alameda Ave / Benton St	Upgraded 1 existing crosswalk to high-visibility crosswalk.	On-Call Striping
8	Santa Clara Ave	Sherman St	Converted intersection to an all-way stop.	On-Call Striping
9	Sherman St	Buena Vista Ave to Central Ave	Installed sharrows and signage.	Sherman St Sharrow Gap On-Call Striping
10	Sherman St	Santa Clara Ave	Installed daylighting.	On-Call Striping
Planned Improvements (approved and in design or construction phase)				
No.	Location	Limits	Improvement	Notes
1	Encinal	Broadway to Sherman	In 2022, Caltrans will implement a major street reconfiguration to encourage safer speeds, make pedestrian crossings safer, and add bicycle lanes.	Details: https://gather.cdmsmith.com/v/y2qm2KdR1wO
2	Grand	Shore Line to Encinal	As part of the planned pavement resurfacing in 2022, the City will resurface and restripe Grand to improve safety for pedestrians and bicyclists. Draft plans include high visibility crosswalks and marked bulb-outs at San Antonio/Grand and at San Jose/Grand, and marked bike lanes between Shore Line and Encinal.	Grand Street community workshop will be held on December 9, 2021. The website is TBA and will be linked on www.alamedaca.gov/SaferStreets#section-4

3	Encinal	Benton	Caltrans will add flashing beacons and crosswalk striping improvements.	Crosswalk Safety Enhancements Project planned for 2021/2022
4	Central Ave	Sherman / Encinal	<ul style="list-style-type: none"> • Install a roundabout. • Upgrade existing crosswalks to high-visibility crosswalks. 	Central Ave Complete Streets project
5	San Jose Ave	Morton St to Union St	Daylighting.	Slow Streets Alameda
Proposed Improvements				
No.	Location	Limits	Improvement	Notes
1	Central Ave	Alameda Ave / Benton St	<ul style="list-style-type: none"> • Redesign intersection geometry. • Reevaluate pedestrian crossings. 	SSA recommendations
2	Encinal Ave	Benton St	Install curb extensions at the northwest and southwest corners.	SSA recommendations
3	Encinal Ave	Paru St	Install curb extensions at the northwest and southwest corners.	Caltrans has a 2022 repaving plan for Encinal Ave
4	San Antonio	Morton St to Paru St	Upgrade the existing midblock crosswalk into a raised yellow high-visibility crosswalk.	SSA recommendations
5	San Antonio	Grand St	Install yield markings and MUTCD SW24-2 (CA) signs on the NB and SB approaches.	SSA recommendations
6	San Jose Ave	San Antonio to Fernside	Proposed to be a traffic-calmed bicycle boulevard in the draft Active Transportation Plan recommendations. This would include various interventions to slow down auto speeds and make the street safer for people walking and biking.	www.activealameda.org/Recommendations#section-3
7	San Antonio	Morton/San Jose to 9 th	Proposed to be a traffic-calmed bicycle boulevard in the draft Active Transportation Plan recommendations.	www.activealameda.org/Recommendations#section-3
8	Paru	Dayton to Clement	Proposed to be a traffic-calmed bicycle boulevard in the draft Active Transportation Plan recommendations.	www.activealameda.org/Recommendations#section-3
9	Alameda Ave	Central to Walnut	Proposed to be a traffic-calmed bicycle boulevard in the draft Active Transportation Plan recommendations.	www.activealameda.org/Recommendations#section-3

11. Island High School

555 Atlantic Ave

Table 11. Island High School Safety Improvements

Island High School				
Past Improvements (last 5 years)				
No.	Location	Limits	Improvement	Notes
1	Ralph Appezzato Memorial Pkwy	Ferry Point to Webster	Built the Cross Alameda Trail, a .9 mile off-street walking and biking path connecting to the trail through Jean Sweeney Park. Eventually this will be part of a four-mile low-stress walking and biking facility from the Miller-Sweeney (Fruitvale) Bridge to the Bay.	www.alamedaca.gov/CrossAlamedaTrail
2	Webster	Buena Vista, Pacific, Lincoln	Installed leading pedestrian interval at traffic lights.	
Planned Improvements (approved and in design or construction phase)				
No.	Location	Limits	Improvement	Notes
1	Atlantic	Const-Itution	Signal improvements to make crossing both directions easier for bicyclists. Add bike signal. Planned for 2022.	www.alamedaca.gov/CrossAlamedaTrail
2	Ralph Appezzato Memorial Pkwy	Webster	Signal improvements to make crossing both directions easier for bicyclists. Add bike signal. Planned for 2022.	www.alamedaca.gov/CrossAlamedaTrail
Proposed Improvements				
No.	Location	Limits	Improvement	Notes
-	-	-	-	-

12. Lincoln Middle School

1250 Fernside Blvd

Suggested walking and biking routes to school: https://www.alamedaca.gov/files/assets/public/departments/alameda/transportation/getting-around/lincolnms_suggestedroutes_28sept2018.pdf

Table 12. Lincoln Middle School Safety Improvements

Lincoln Middle School				
Past Improvements (last 5 years)				
No.	Location	Limits	Improvement	Notes
1	Encinal Ave	High to Fernside	Installed buffered bike lanes.	
2	Fernside Blvd	Encinal	<ul style="list-style-type: none"> Installed intersection safety upgrades such as bulb-outs, bollards, daylighting, and a bike box. Installed leading pedestrian interval at traffic light. 	2020 resurfacing
3	Fernside Blvd	Otis	Installed leading pedestrian interval at traffic light.	
Planned Improvements (approved and in design or construction phase)				
No.	Location	Limits	Improvement	Notes
1	Fernside Blvd	San Jose Ave	<ul style="list-style-type: none"> RRFB modification. Install centerline stripe. Install striped bulb-outs with bollards. Daylighting. 	Highway Safety Improvement Program 2020 Grant Project
Proposed Improvements				
No.	Location	Limits	Improvement	Notes
1	Otis	Fernside to Broadway	Caltrans is considering a street reconfiguration as part of an upcoming pavement resurfacing project.	
2	Encinal	Fernside to Broadway	Proposed for buffered bike lanes in the draft Active Transportation Plan recommendations.	www.activealameda.org/Recommendations#section-3
3	Encinal	Fernside to Eastshore	Proposed to be a traffic-calmed bicycle boulevard in the draft Active Transportation Plan recommendations.	www.activealameda.org/Recommendations#section-3

13. Love Elementary School

2025 Santa Clara Ave

- School Safety Assessment: May 2016
- Suggested walking and biking routes to school: https://www.alamedaca.gov/files/assets/public/departments/alameda/transportation/getting-around/haightes_suggestedroutes_28sept2018.pdf

Table 13. Love Elementary School Safety Improvements

Love Elementary School				
Past Improvements (last 5 years)				
No.	Location	Limits	Improvement	Notes
1	Santa Clara	Oak to Grand	Installed new bicycle lanes and narrowed motor vehicle lanes to calm speeds.	
2	Santa Clara	Willow	<ul style="list-style-type: none"> • Installed all-way stop signs. • Installed 2 high-visibility crosswalks. 	Crosswalks were SSA recommendations
3	Lincoln Ave	Willow St	<ul style="list-style-type: none"> • Installed daylighting. • Restriped 4 crosswalks and upgraded to high-visibility crosswalks. • Added ladder hatching. • Restriped centerlines. 	www.alamedaca.gov/2019SafetyImprovements ; SSA recommendations
4	Lincoln Ave	Chestnut St	<ul style="list-style-type: none"> • Installed daylighting. • Refreshed 4 faded crosswalks. • Installed ladder hatching. • Refreshed/installed 50' centerlines. • Replaced faded signage. 	www.alamedaca.gov/2019SafetyImprovements
5	Chestnut St	Lincoln Ave	<ul style="list-style-type: none"> • Installed 4 high-visibility crosswalks. • Installed advance stop bars. 	SSA recommendations; On-Call Striping
6	Chestnut St	Santa Clara Ave	Installed 4 high-visibility crosswalks.	SSA recommendations
7	Pacific	Oak to 9 th	Installed a Slow Street.	www.SlowStreetsAlameda.org
Planned Improvements (approved and in design or construction phase)				
No.	Location	Limits	Improvement	Notes
1	Lincoln Ave	Paru St to Park St	Daylighting.	High Injury Corridor Daylighting Project: www.alamedaca.gov/HICdaylighting
2	Pacific Ave	Ninth St to Oak St	Daylighting.	Slow Streets Alameda

Proposed Improvements				
No.	Location	Limits	Improvement	Notes
1	Lincoln Ave	Broadway to Marshall	In 2022, the City will conduct a public outreach and design process to plan a major street reconfiguration to improve safety on Lincoln Ave.	Webpage TBA. It will be linked here: www.alamedaca.gov/SaferStreets#section-4
2	Chestnut St	Santa Clara Ave	Install advance stop bars.	SSA recommendations
3	Willow St	Lincoln Ave	Install advance stop bars.	SSA recommendations
4	Santa Clara Ave	School Campus	Establish safe loading zone procedures, and conduct training and education.	SSA recommendations
5	Lincoln Ave	School Campus	Establish safe loading zone procedures, and conduct training and education.	SSA recommendations
6	School Campus	Bicycle Parking	<ul style="list-style-type: none"> • Install a fence for secure bicycle parking. • Additional bike racks and locks. 	SSA recommendations
7	Chestnut	Calhoun to Clement	Proposed to be a traffic-calmed bicycle boulevard in the draft Active Transportation Plan recommendations. This would include various interventions to slow down auto speeds and make the street safer for people walking and biking.	www.activealameda.org/Recommendations#section-3
8	Pacific	Park to Marshall	Proposed to be a traffic-calmed bicycle boulevard in the draft Active Transportation Plan recommendations.	www.activealameda.org/Recommendations#section-3

14. Maya Lin School

825 Taylor Ave

- School Safety Assessment: February 2016
- Suggested walking and biking routes to school: https://www.alamedaca.gov/files/assets/public/departments/alameda/transportation/getting-around/mayalines_suggestedroutes_28sept2018.pdf

Table 14. Maya Lin School Safety Improvements

Maya Lin School				
Past Improvements (last 5 years)				
No.	Location	Limits	Improvement	Notes
1	Santa Clara Ave	St. Charles St	Installed daylighting.	www.alamedaca.gov/2019SafetyImprovements
2	Eighth St	Taylor Ave	<ul style="list-style-type: none"> • Installed KEEP CLEAR markings and signage. • Refreshed STOP markings. 	SSA recommendation; On-Call Striping
3	Ninth St	Taylor Ave	<ul style="list-style-type: none"> • Converted intersection to an all-way stop. • Installed 4 high-visibility crosswalks. 	SSA recommendation; On-Call Striping
4	Santa Clara	Oak to Grand	Installed new bicycle lanes and narrowed motor vehicle lanes to calm speeds.	
5	Eighth St	Haight Ave	<ul style="list-style-type: none"> • Installed KEEP CLEAR markings and signage. • Refreshed stop bar and STOP markings. 	On-Call Striping
6	Eighth St	Santa Clara Ave	<ul style="list-style-type: none"> • Installed KEEP CLEAR markings and signage. • Installed leading pedestrian interval at traffic light. 	On-Call Striping
7	Eighth St	Central, Lincoln	Installed leading pedestrian interval at traffic lights.	
8	Ninth St	Haight	Installed stop sign, stop bar, and STOP legend on W leg.	On-Call Striping
9	Ninth St	Lincoln to Central	Installed sharrows.	On-Call Striping
10	Santa Clara Ave	Eighth St to Ninth St	Installed secondary bike lane striping (parking lane stripe) for eastbound and westbound directions.	City recommendation
11	Mozart St	Lincoln Ave to Santa Clara Ave	Installed daylighting.	On-Call Striping

Planned Improvements (approved and in design or construction phase)				
No.	Location	Limits	Improvement	Notes
1	Central Ave	Sherman to Main	In 2023, the City will implement a major street reconfiguration to encourage safer speeds, make pedestrian crossings safer, and add bicycle facilities. This includes a two-way, protected bikeway on Central from Main to Eighth. Regular bicycle lanes will be added on both sides of the Central between Eighth and Sherman.	www.AlamedaCA.gov/Central
2	Central	9 th St	In 2023, the City will install raised crosswalks with high visibility striping, striped bulb-outs, bike lanes on Central, and bike boxes on 9 th St.	www.AlamedaCA.gov/Central
3	9 th St	Haight to Buena Vista	In 2022, the City will resurface pavement and restripe the street, providing an opportunity to consider marked crosswalks at Buena Vista and 9 th St.	Pavement management maps: www.alamedaca.gov/SaferStreets#section-5
Proposed Improvements				
No.	Location	Limits	Improvement	Notes
1	Lincoln	Broadway to Marshall	In 2022, the City will conduct a public outreach and design process to plan a major street reconfiguration to improve safety on Lincoln Ave. This would include safety improvements at 9 th and Lincoln.	Webpage TBA. It will be linked here: www.alamedaca.gov/SaferStreets#section-4
2	Santa Clara Ave	Eighth St	<ul style="list-style-type: none"> • Install MUTCD R10-2 signs on all four corners. If ped push buttons are to be installed, use correct MUTCD sign. • Increase walk time. 	SSA recommendation
3	Eighth St	Taylor Ave	Analyze street lighting.	SSA recommendation
4	Santa Clara Ave	Eighth St to Ninth St	<ul style="list-style-type: none"> • Repaint and extend white curb. • Improve passenger loading zone signage for better visibility. • Discourage U-turns by potentially installing solid-double yellow striping. 	City recommendation
5	9th St	San Jose to Jean Sweeney Park	Proposed to be a traffic-calmed bicycle boulevard in the draft Active Transportation Plan recommendations. This would include various interventions to slow down auto speeds and make the street safer for people walking and biking.	www.activealameda.org/Recommendations#section-3

15. Nea Community Learning Center / Alameda Community Learning Center (ACLC)

1900 3rd St

- School Safety Assessment: April 2017
- Suggested walking and biking routes to school: [https://www.alamedaca.gov/files/assets/public/departments/alameda/transportation/getting-around/sr2s - nea community learning center - 2015.pdf](https://www.alamedaca.gov/files/assets/public/departments/alameda/transportation/getting-around/sr2s-nea-community-learning-center-2015.pdf)

Table 15. Nea Community Learning Center / ACLC Safety Improvements

Nea Community Learning Center / ACLC				
Past Improvements (last 5 years)				
No.	Location	Limits	Improvement	Notes
1	Ralph Appezzato Memorial Pkwy	Ferry Point to Webster	Built the Cross Alameda Trail, a .9 mile off-street walking and biking path connecting to the trail through Jean Sweeney Park. Eventually this will be part of a four-mile low-stress walking and biking facility from the Miller-Sweeney (Fruitvale) Bridge to the Bay.	www.alamedaca.gov/CrossAlamedaTrail
2	Ralph Appezzato Memorial Pkwy	Cross Alameda Trail	Connected the campus bicycle parking area to the Cross Alameda Trail.	SSA recommendations; Cross Alameda Trail Project
3	Ralph Appezzato Memorial Pkwy	Third St	<ul style="list-style-type: none"> • Installed 4 high-visibility crosswalks. • Installed advance stop bars. 	SSA recommendations; On-Call Striping
4	Ralph Appezzato Memorial Pkwy	Poggi St	<ul style="list-style-type: none"> • Installed 3 high-visibility crosswalks at north, south, and west legs. • Installed ADA-compliant curb ramp at SE corner. • Installed advance stop bars. 	SSA recommendations; Cross Alameda Trail Project
5	Third St	Brush St	Installed 4 high-visibility crosswalks.	SSA recommendations; On-Call Striping
6	Main St	North of Pacific	To calm high speeds on this street, reconfigured it from four motor vehicle lanes to two motor vehicle lanes plus bike lanes.	
Planned Improvements (approved and in design or construction phase)				
No.	Location	Limits	Improvement	Notes
-	-	-	-	-

Proposed Improvements				
No.	Location	Limits	Improvement	Notes
1	Third St	School Campus	<ul style="list-style-type: none"> • Install ADA-compliant curb ramp. • Install 15-minute parking zone. 	SSA recommendations
2	Ralph Appezzato Memorial Pkwy	Poggi St	Install a high-visibility crosswalk at the east leg with ped ramps at the NE and SE corners.	City Recommendation
3	Third St	Loading Zone	Training and facilitating of loading zone and traffic rules.	City Recommendation
4	Pacific	Marshall to Main	In 2022, the City will conduct a public outreach and design process to plan a major street reconfiguration to improve safety on the Lincoln corridor, including Marshall and Pacific west of Marshall.	Webpage TBA. Will be linked here: www.alamedaca.gov/SaferStreets#section-4
5	3 rd /Mosley	Central to Singleton	Proposed to be a traffic-calmed bicycle boulevard in the draft Active Transportation Plan recommendations. This would include various interventions to slow down auto speeds and make the street safer for people walking and biking.	www.activealameda.org/Recommendations#section-3
6	Poggi St	Ralph Appezzato to Buena Vista/5 th	Proposed as a bike lane in the draft Active Transportation Plan recommendations.	www.activealameda.org/Recommendations#section-3
7	Coral Sea	Ralph Appezzato to Willie Stargell	Proposed as a bike lane in the draft Active Transportation Plan recommendations.	www.activealameda.org/Recommendations#section-3

16. Paden Elementary School

444 Central Ave

Suggested walking and biking routes to school: [https://www.alamedaca.gov/files/assets/public/departments/alameda/transportation/getting-around/sr2s - paden elementary school - 2015.pdf](https://www.alamedaca.gov/files/assets/public/departments/alameda/transportation/getting-around/sr2s_-_paden_elementary_school_-_2015.pdf)

Table 16. Paden Elementary School Safety Improvements

Paden Elementary School				
Past Improvements (last 5 years)				
No.	Location	Limits	Improvement	Notes
1	Central Ave	Ballena Blvd / Fourth St	<ul style="list-style-type: none"> Refreshed all 5 crosswalk striping. Installed daylighting. Repaired sidewalk. 	www.alamedaca.gov/2019SafetyImprovements
2	Santa Clara	6 th to Pacific	Installed a Slow Street.	www.SlowStreetsAlameda.org
3	Central Ave	Fifth St	Installed advanced stop bar.	On-Call Striping
Planned Improvements (approved and in design or construction phase)				
No.	Location	Limits	Improvement	Notes
1	Central Ave	Sherman to Main	In 2023, the City will implement a major street reconfiguration to encourage safer speeds, make pedestrian crossings safer, and add bicycle facilities. This includes a two-way, protected bikeway on Central from Main to Eighth. Regular bicycle lanes will be added on both sides of the Central between Eighth and Sherman.	www.AlamedaCA.gov/Central
2	Central	4 th	A roundabout is approved at this location, but construction timing is dependent on funding acquisition. Roundabouts reduce fatal crashes by 90%.	www.AlamedaCA.gov/Central
3	Central	3 rd /Taylor	In 2023, the City will install a roundabout at this intersection.	www.AlamedaCA.gov/Central
Proposed Improvements				
No.	Location	Limits	Improvement	Notes
1	5 th St	Central to Buena Vista	Proposed to be a traffic-calmed bicycle boulevard in the draft Active Transportation Plan recommendations. This would include various interventions to slow down auto speeds and make the street safer for people walking and biking.	www.activealameda.org/Recommendations#section-3
2	Ballena Blvd	Central to Cola Ballena	Proposed to be a traffic-calmed bicycle boulevard in the draft Active Transportation Plan recommendations.	www.activealameda.org/Recommendations#section-3

17. The Phillips Academy

1910 Central Ave

Table 17. The Phillips Academy Safety Improvements

The Phillips Academy				
Past Improvements (last 5 years)				
No.	Location	Limits	Improvement	Notes
1	Central Ave	Grand St to Willow St	Increase visibility by daylighting all intersections.	High Injury Corridor Daylighting Project: www.alamedaca.gov/HICdaylighting
2	Santa Clara	Oak to Grand	Installed new bicycle lanes and narrowed motor vehicle lanes to calm speeds.	
3	Santa Clara	Willow	Installed all-way stop signs.	
Planned Improvements (approved and in design or construction phase)				
No.	Location	Limits	Improvement	Notes
1	Encinal Ave	Broad-way to Sherman	In 2022, Caltrans will implement a major street reconfiguration to encourage safer speeds, make pedestrian crossings safer, and add bicycle lanes.	Details: https://gather.cdmsmith.com/v/y2qm2KdR1wO
Proposed Improvements				
No.	Location	Limits	Improvement	Notes
1	Lincoln	Broadway to Marshall	In 2022, the City will conduct a public outreach and design process to plan a major street reconfiguration to improve safety on Lincoln Ave.	Webpage TBA. It will be linked here: www.alamedaca.gov/SaferStreets#section-4
2	Chestnut	Calhoun to Clement	Proposed to be a traffic-calmed bicycle boulevard in the draft Active Transportation Plan recommendations. This would include various interventions to slow down auto speeds and make the street safer for people walking and biking.	www.activealameda.org/Recommendations#section-3
3	Alameda Ave	Walnut to Central	Proposed to be a traffic-calmed bicycle boulevard in the draft Active Transportation Plan recommendations. This would include various interventions to slow down auto speeds and make the street safer for people walking and biking.	www.activealameda.org/Recommendations#section-3

18. Rising Star Montessori School

1421 High St

Table 18. Rising Star Montessori School Safety Improvements

Rising Star Montessori School				
Past Improvements (last 5 years)				
No.	Location	Limits	Improvement	Notes
1	Central Ave	Pearl St to Hansen Ave	Installed daylighting.	High Injury Corridor Daylighting Project: www.alamedaca.gov/HICdaylighting
2	Fernside	East of High to Thompson	Widened bike lanes to six feet and added buffer.	
3	High St	Thompson Ave	<ul style="list-style-type: none"> Upgraded 1 existing crosswalk to high-visibility crosswalk. Installed 2 crosswalks on E and W legs. Installed advanced stop bar on W leg. Restriped centerline stripe on E leg. 	On-Call Striping
Planned Improvements (approved and in design or construction phase)				
No.	Location	Limits	Improvement	Notes
-	-	-	-	-
Proposed Improvements				
No.	Location	Limits	Improvement	Notes
1	Court	Lincoln to Fillmore	Proposed to be a traffic-calmed bicycle boulevard in the draft Active Transportation Plan recommendations. This would include various interventions to slow down auto speeds and make the street safer for people walking and biking.	www.activealameda.org/Recommendations#section-3
2	Central	High to Fernside	Proposed to be a traffic-calmed bicycle boulevard in the draft Active Transportation Plan recommendations.	www.activealameda.org/Recommendations#section-3
3	Garfield	High to Fernside	Proposed to be a traffic-calmed bicycle boulevard in the draft Active Transportation Plan recommendations.	www.activealameda.org/Recommendations#section-3
4	Lincoln	High to Park	Proposed to be a traffic-calmed bicycle boulevard in the draft Active Transportation Plan recommendations.	www.activealameda.org/Recommendations#section-3

19. Ruby Bridges Elementary School

351 Jack London Ave

Suggested walking and biking routes to school: [https://www.alamedaca.gov/files/assets/public/departments/alameda/transportation/getting-around/sr2s - ruby bridges elementary school - 2015.pdf](https://www.alamedaca.gov/files/assets/public/departments/alameda/transportation/getting-around/sr2s-ruby-bridges-elementary-school-2015.pdf)

Table 19. Ruby Bridges Elementary School Safety Improvements

Ruby Bridges Elementary School				
Past Improvements (last 5 years)				
No.	Location	Limits	Improvement	Notes
1	Mosley Ave	Kingfisher Ave	Improved signage around traffic circle.	www.alamedaca.gov/2019SafetyImprovements
2	W Midway Ave	Main St	<ul style="list-style-type: none"> West side of intersection, installed 1 marked crosswalk with ladder hatching. SE corner, back of existing no ped crossing sign. Installed ped crossing sign facing SW corner. Refreshed faded striping at intersection. Improved current striping to current standard. 	www.alamedaca.gov/2019SafetyImprovements
3	Coral Sea St	Neptune Gardens	Improved signage around traffic circle.	www.alamedaca.gov/2019SafetyImprovements
4	Ralph Appezzato Memorial Pkwy	Ferry Point to Webster	Built the Cross Alameda Trail, a .9 mile off-street walking and biking path connecting to the trail through Jean Sweeney Park. Eventually this will be part of a four-mile low-stress walking and biking facility from the Miller-Sweeney (Fruitvale) Bridge to the Bay.	www.alamedaca.gov/CrossAlamedaTrail
5	Ralph Appezzato Memorial Pkwy	Poggi St	<ul style="list-style-type: none"> Installed 3 high-visibility crosswalks at north, south, and west legs. Installed ADA-compliant curb ramp at SE corner. 	Nea SSA recommendations; Cross Alameda Trail Project
6	Willie Stargell Ave	Fifth St to Webster	<ul style="list-style-type: none"> Refreshed bike lane striping and legends. Refreshed traffic striping and arrow legends. 	On-Call Striping
7	Willie Stargell	Main St	Installed leading pedestrian interval at traffic light.	
Planned Improvements (approved and in design or construction phase)				
No.	Location	Limits	Improvement	Notes
-	-	-	-	-

Proposed Improvements				
No.	Location	Limits	Improvement	Notes
1	Ralph Appezzato Memorial Pkwy	Poggi St	Install 1 high-visibility crosswalk at the east leg.	City Recommendation
2	Mosley/3 rd	Central to Singleton	Proposed to be a traffic-calmed bicycle boulevard in the draft Active Transportation Plan recommendations. This would include various interventions to slow down auto speeds and make the street safer for people walking and biking.	www.activealameda.org/Recommendations#section-3
3	Coral Sea	Ralph Appezzato to Willie Stargell	Proposed as a bike lane in the draft Active Transportation Plan recommendations.	www.activealameda.org/Recommendations#section-3
4	Poggi St	Ralph Appezzato to Buena Vista/5 th	Proposed as a bike lane in the draft Active Transportation Plan recommendations.	www.activealameda.org/Recommendations#section-3

20. Saint Joseph Elementary School / Saint Joseph Notre Dame High School

1910 San Antonio Ave / 1011 Chestnut St

Table 20. Saint Joseph Elementary School / Saint Joseph Notre Dame High School Safety Improvements

Saint Joseph Elementary School / Saint Joseph Notre Dame High School				
Past Improvements (last 5 years)				
No.	Location	Limits	Improvement	Notes
1	Willow	San Jose	Installed a high visibility crosswalk.	
2	San Jose	Morton to Oak	Installed a Slow Street.	www.SlowStreetsAlameda.org
Planned Improvements (approved and in design or construction phase)				
No.	Location	Limits	Improvement	Notes
1	Encinal	Broadway to Sherman	In 2022, Caltrans will implement a major street reconfiguration to encourage safer speeds, make pedestrian crossings safer, and add bicycle lanes.	Details: https://gather.cdmsmith.com/v/y2qm2KdR1wO
2	San Jose Ave	Union St to Oak St	Install daylighting to improve visibility.	www.AlamedaCA.gov/SlowStreets

Proposed Improvements				
No.	Location	Limits	Improvement	Notes
1	Chestnut	Calhoun to Clement	Proposed to be a traffic-calmed bicycle boulevard in the draft Active Transportation Plan recommendations. This would include various interventions to slow down auto speeds and make the street safer for people walking and biking.	www.activealameda.org/Recommendations#section-3
2	San Jose Ave	San Antonio to Fernside	Proposed to be a traffic-calmed bicycle boulevard in the draft Active Transportation Plan recommendations.	www.activealameda.org/Recommendations#section-3

21. Saint Philip Neri School

1335 High St

Table 21. Saint Philip Neri School Safety Improvements

Saint Philip Neri School				
Past Improvements (last 5 years)				
No.	Location	Limits	Improvement	Notes
1	Encinal Ave	High	<ul style="list-style-type: none"> • Refreshed all 5 crosswalk striping. • Installed ladder hatching. • Installed daylighting. • Installed advance limit lines (NB, SB). • Refreshed centerline striping. • Re-marked STOP legend. • Replaced faded street name signs. • Repaired sidewalk. 	www.alamedaca.gov/2019SafetyImprovements
2	High	Encinal Ave to Sterling Ave	<ul style="list-style-type: none"> • Installed daylighting. • Refreshed 5 faded crosswalks. • Installed advance stop bars. • Refreshed/installed centerlines. • Refreshed SLOW SCHOOL XING markings. • Re-marked STOP legends. • Replaced faded signage. 	www.alamedaca.gov/2019SafetyImprovements
3	High	Santa Clara	Installed leading pedestrian interval at traffic light.	

4	Central Ave	Pearl St to Hansen Ave	Installed daylighting.	High Injury Corridor Daylighting Project: www.alamedaca.gov/HICdaylighting
5	Fernside	East of High to Thompson	Widened bike lanes to six feet and added buffer.	
Planned Improvements (approved and in design or construction phase)				
No.	Location	Limits	Improvement	Notes
-	-	-	-	-
Proposed Improvements				
No.	Location	Limits	Improvement	Notes
1	Court	Lincoln to Fillmore	Proposed to be a traffic-calmed bicycle boulevard in the draft Active Transportation Plan recommendations. This would include various interventions to slow down auto speeds and make the street safer for people walking and biking.	www.activealameda.org/Recommendations#section-3
2	Central	High to Fernside	Proposed to be a traffic-calmed bicycle boulevard in the draft Active Transportation Plan recommendations.	www.activealameda.org/Recommendations#section-3
3	Garfield	High to Fernside	Proposed to be a traffic-calmed bicycle boulevard in the draft Active Transportation Plan recommendations.	www.activealameda.org/Recommendations#section-3
4	Lincoln	High to Park	Proposed to be a traffic-calmed bicycle boulevard in the draft Active Transportation Plan recommendations.	www.activealameda.org/Recommendations#section-3

22. Will C. Wood Middle School

420 Grand St

- School Safety Assessment: April 2016
- Suggested walking and biking routes to school: [https://www.alamedaca.gov/files/assets/public/departments/alameda/transportation/getting-around/sr2s - wood school - 2017.pdf](https://www.alamedaca.gov/files/assets/public/departments/alameda/transportation/getting-around/sr2s-wood-school-2017.pdf)

Table 22. Will C. Wood Middle School Safety Improvements

Will C. Wood Middle School				
Past Improvements (last 5 years)				
No.	Location	Limits	Improvement	Notes
1	Otis	Grand	The City installed its first protected intersection at this location. This included: <ul style="list-style-type: none"> • High-visibility crosswalks. • Advance stop bars. • Buffered bike lanes. • Concrete islands. • Daylighting. 	Otis Drive Safety Improvement Project: www.AlamedaCA.gov/Otis SSA recommendation
2	Otis	Willow to Westline	Reconfigured the street to encourage safer motor vehicle speeds, create safer pedestrian crossings, and add bicycle lanes.	Otis Drive Safety Improvement Project: www.AlamedaCA.gov/Otis
3	Grand	Shore Line to Otis	At mid-block crossing: <ul style="list-style-type: none"> • Installed daylighting. • Installed new reflective tape around bollards (Coral Reef Pl). • Installed school xing signs on median. 	www.alamedaca.gov/2019SafetyImprovements
4	Grand	Shore Line to Otis	<ul style="list-style-type: none"> • Improved locations of School Zone and School Crossing Ahead signs. • Installed speed limit signs at Otis Dr and at Shore Line Dr. • Refreshed bike lane striping. 	www.alamedaca.gov/2019SafetyImprovements; On-Call Striping
5	Grand	Shore Line to Pacific	Daylighting.	High Injury Corridor Daylighting Project: www.alamedaca.gov/HICdaylighting
6	Otis	Waterview Isle	<ul style="list-style-type: none"> • Installed rapid flashing beacons. • Added striped bulb-outs. • Installed median pedestrian refuge. • Installed buffered bike lanes. • Installed ADA parking stall. 	SSA recommendation; Otis Drive Safety Improvement Project: www.AlamedaCA.gov/Otis

Planned Improvements (approved and in design or construction phase)				
No.	Location	Limits	Improvement	Notes
1	Grand	Shore Line to Encinal	As part of the planned pavement resurfacing in 2022, the City will restripe Grand to improve safety for pedestrians and bicyclists, including in front of the school. Draft plans include a separated bikeway on the east side of the street (northbound) between Shore Line and Palmer Ct. and rapid flash beacons at the midblock crossing in front of the school.	Grand Street community workshop will be held on December 9, 2021. The website is TBA and will be linked on www.alamedaca.gov/SaferStreets#section-4
Proposed Improvements				
No.	Location	Limits	Improvement	Notes
1	Grand	Shore Line to Otis	Repair cracked sidewalk.	SSA recommendation
2	Grand	At Wood Middle	Install PULL FORWARD markings and signage.	SSA recommendation
3	Grand	Otis	Install leading pedestrian interval at traffic light.	SSA recommendation
4	Paru	Dayton to Clement	Proposed to be a traffic-calmed bicycle boulevard in the draft Active Transportation Plan recommendations. This would include various interventions to slow down auto speeds and make the street safer for people walking and biking.	www.activealameda.org/Recommendations#section-3
5	Dayton	Paru to Grand	Proposed to be a traffic-calmed bicycle boulevard in the draft Active Transportation Plan recommendations.	www.activealameda.org/Recommendations#section-3



Attachment A

Academy of Alameda Safe Routes to Schools Improvement Plan

Site Assessment held February 2016

- 1

Pacific Ave. / 4th St. Intersection
Install high-visibility crosswalks. Install advance yield lines and Yield Here to Pedestrians signs on Pacific Ave.
- 2

Pacific Ave. / 4th St. Intersection
Consider engineering study for median modifications to better define turn lanes and movements. As part of study, consider prohibiting U-turns.
- 3

Pacific Ave. / 4th St. Intersection
Extend northern median to create a pedestrian refuge, clarify intersection navigation, and discourage illegal U-turns.
- 4

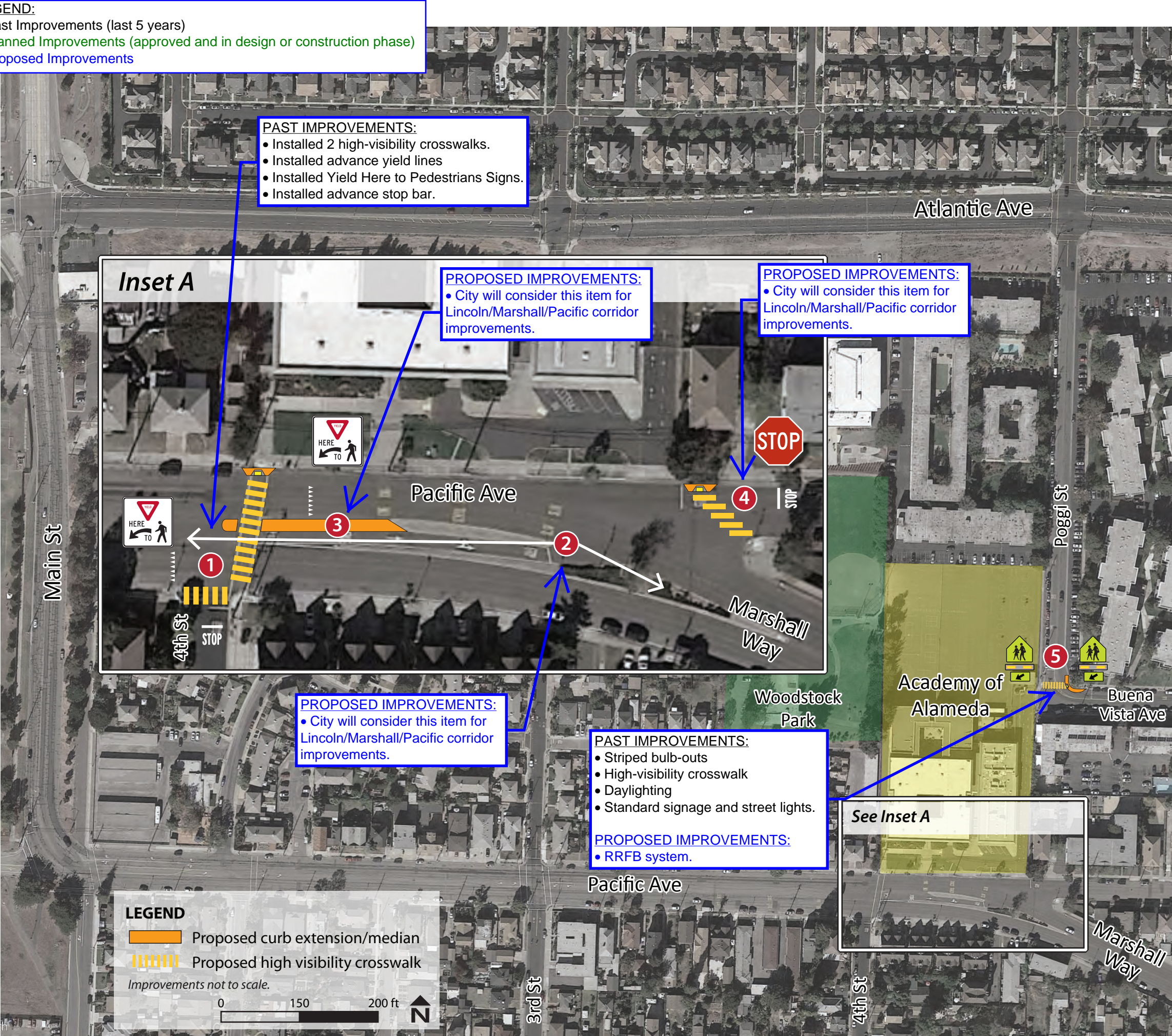
Pacific Ave. / Marshall Wy. Intersection
Consider moving stop sign back to facilitate pedestrian crossing and installing high-visibility crosswalk and curb extension.
- 5

Poggi St. / Buena Vista Ave. Intersection
Install curb extension, high visibility crosswalk, and Rectangular Rapid Flashing Beacons to facilitate pedestrian crossing.
- 6

Non-Infrastructure Recommendation
Consider training school staff members or parent volunteers to facilitate loading zone drop-off.

PROPOSED IMPROVEMENTS:

• Training and facilitating of loading zone.



The above items are recommendations from the Alameda County Transportation Commission and are based on Safe Routes to Schools site assessment best practices. Any additional reviews and final recommendations are subject to the standards and regulations of the appropriate governing agencies.

LEGEND:

- Past Improvements (last 5 years)
- Planned Improvements (approved and in design or construction phase)
- Proposed Improvements

Existing Conditions

Existing Curb Paint

Existing Bike Parking

Existing School Access Point

Recommendations

Recommended Paint & Post Curb Extension

Recommended Curb Ramp

Recommended High-Visibility Crosswalk

Recommended Transverse Crosswalk

Recommended Advance Yield Markings

Recommended Advanced Stop Line Marking

Recommended Curb Paint

Recommended Sidewalk

Recommended Delineator

Recommended CA-MUTCD R3-4 "No U-Turn" Signage

Park & Walk Location

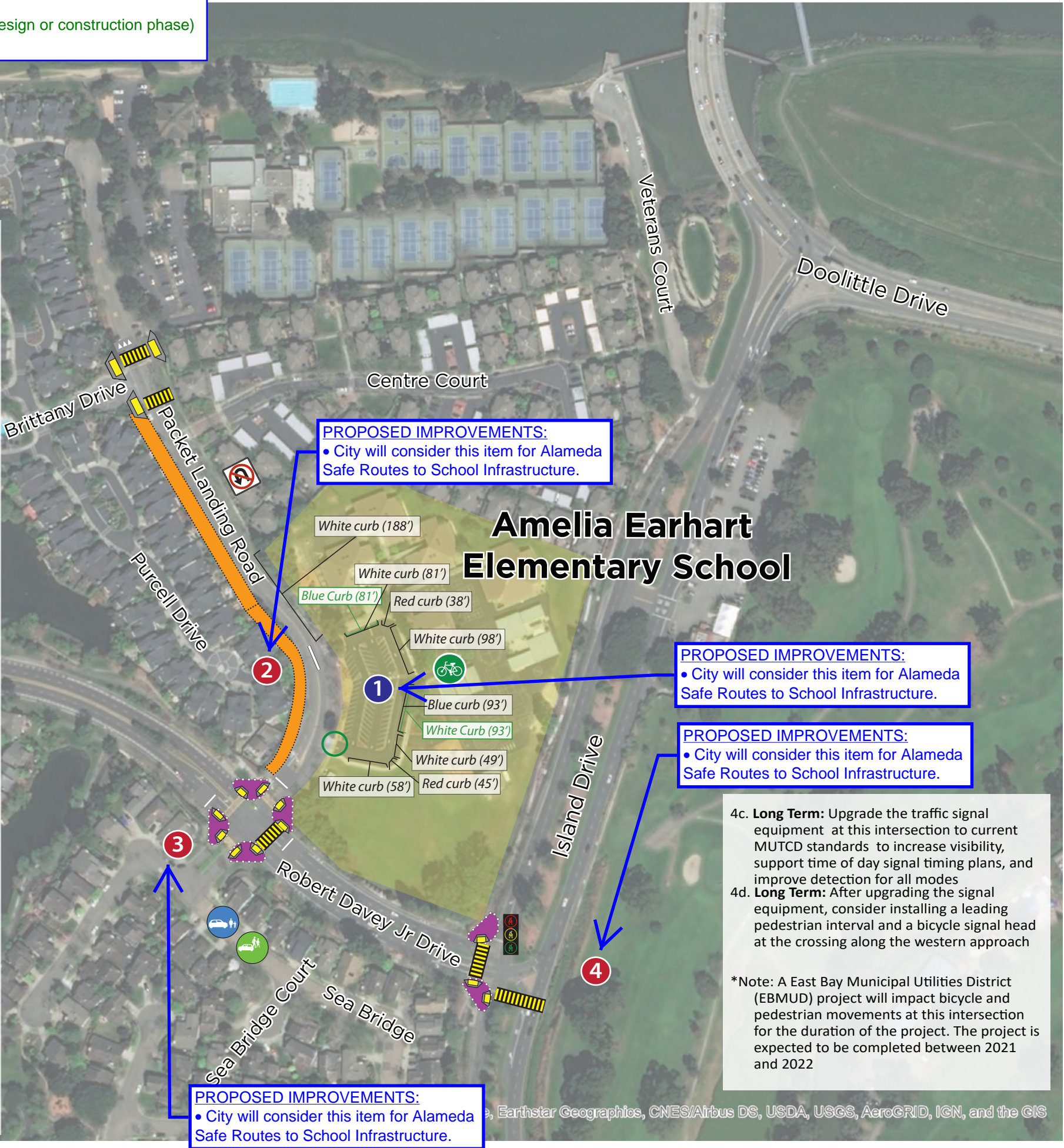
Alternative Drop-off Location

Recommended Bicycle Signal

Implementing Agency

City of Alameda

Alameda Unified School District



Safe Routes to Schools Improvement Plan
Amelia Earhart Elementary School
Alameda, CA
School Safety Assessment held January 2020

- 1

Parking Lot Loop

1a.

Work with school staff and district staff to determine if it is ADA-compliant to move bus zone to north parking lot curb

1b.

Work with school staff and district staff to determine if it is ADA-compliant to replace current bus zone with white curb (parent loading/unloading)

1c.

Remove no left turn signs from exit driveway. The implementation of this should be coordinated with items 1d and 3h

1d.

If feasible, place a trained school/district staff member near the exit driveway to help monitor vehicles and pedestrians. The school should work with the City and District to provide staff with appropriate training
- 2

School Frontage on Packet Landing Road

2a.

Study options for a traffic calming circle and/or other alternatives near Packet Landing Road/Brittany Drive. Consider options for public easements with the neighboring homeowners association

2b.

Install "No U-turn" signage along Packet Landing Road

2c.

Refresh the centerline on Packet Landing Road

2d.

Long-term: At Brittany Drive, install new high-visibility crosswalk south of the intersection when new sidewalk is installed. Build a curb ramp at the southwest corner

2e.

Long-term: At Brittany Drive, upgrade existing crosswalk north of the intersection to high-visibility crosswalk, install advance yield markings, and upgrade ramps to current standards

2f.

Long-term: Build sidewalk along west side of Packet Landing Road where missing, and widen sidewalk where it is narrow. At the Brittany Drive intersection, install a curb ramp at the southwest corner
- 3

Packet Landing Road/Robert Davey Jr Drive*

3a.

Updated the pedestrian push buttons to current ADA standards. Consider unactuating the signal so the pedestrian phase activates automatically each traffic cycle during school arrival and dismissal hours

3b.

Reduce curb radii at all four corners. Build with paint and posts in the short term, and upgrade to concrete when funding becomes available

3c.

Upgrade curb ramps to be perpendicular at each corner

3d.

Stripe a high-visibility crosswalk across the eastern approach and remove "No Pedestrian Crossing" signage

3e.

Install advance stop lines at north, west, and east approaches

3f.

Formalize existing informal "Park and Walk" location on Sea Bridge and/or encourage use as an alternative drop-off location

3g.

At the southeast corner, add pavement markings and signage indicating that bikes may use the trail ramp. Add bollards to both sides of the ramp to further visually deter vehicles. **In the long-term**, shift and reconstruct the ramp east of its current location to separate it from the intersection. Rebuild the trail ramp at an appropriate width for bikes and other mobility devices.

3h.

Monitor and evaluate the signal timing at this intersection. Make adjustments as necessary to improve traffic flow. Reevaluate signal timing after each school circulation change
- 4

Robert Davey Jr Drive/Island Drive

4a.

Refresh existing crosswalks

4b.

Install curb extensions at northwest and southwest corners that extend only into Island Drive; alternatively, reduce curb radii at these corners. Build with paint and posts in the short term, and upgrade to concrete when funding becomes available. Ensure that the design of the curb extensions do not hinder bus turning movements

*The above items are recommendations only and based on Safe Routes to Schools site assessment best practices. Feasibility determination, final design, accessibility, funding, and implementation of any recommended improvements is the responsibility of the appropriate governing agency.
**Red curb and/or parking restriction signage should be provided between advance stop/yield markings and the crosswalk. Exact red curb distance should be determined in accordance with the CA-MUTCD and City policies/standards. Red curb not symbolized on map.

Safe Routes to Schools Improvement Plan
Edison Elementary School
Alameda

Site Assessment held May 2019

- 1

Buena Vista Avenue/Pearl Street
 - Refresh the four high-visibility crosswalks
 - Install advance stop markings at all approaches to discourage vehicle encroachment
 - Install appropriate red curb/parking restriction signage at this intersection**
- 2

Buena Vista Avenue/Versailles Avenue
 - Refresh the four high-visibility crosswalks
 - Install advance stop markings at all approaches to discourage vehicle encroachment
 - Install an R3-4 No U-turn sign for eastbound Buena Vista Avenue traffic
 - Install appropriate red curb/parking restriction signage at this intersection**
- 3

Versailles Avenue/Lincoln Avenue
 - Refresh the four high-visibility crosswalks
 - Install advance stop markings at all approaches to discourage vehicle encroachment
 - Install appropriate red curb/parking restriction signage at this intersection**
- 4

Lincoln Avenue/Pearl Street
 - Refresh the existing high-visibility crosswalk across the eastern approach
 - Install high visibility crosswalks across the northern and southern approaches
 - Install advance stop markings at all approaches
 - Install appropriate red curb/parking restriction signage at this intersection**
- 5

Pearl Street
 - Extend the white curb drop-off area by 130 feet to the south (the rest of the block)
 - Consider marking a high visibility crosswalk across Pearl Street from the southern corner of Edison Court
 - If installed, construct a curb ramp on the eastern side of Pearl Street and install advance yield markings on Pearl Street
 - Install appropriate red curb/parking restriction signage at this intersection**
- 6

Lincoln Avenue/Broadway
 - Install yellow transverse crosswalks across the eastern and western crosswalks; set back and reinstall advance stop markings if necessary
 - Mark a high visibility crosswalk across the southern Broadway approach
 - Install advance yield markings for the Broadway crosswalks with R1-5 Yield Here to Pedestrians Signs
 - Install RRFBs for the Broadway crosswalks (RRFB should be set up to serve both crosswalks)
 - Install appropriate red curb/parking restriction signage at this intersection**
- 7

Gibbons Drive/Lincoln Avenue
 - Refresh the four high-visibility crosswalks
 - Install advance stop markings at all approaches to discourage vehicle encroachment
 - Install appropriate red curb/parking restriction signage at this intersection**

8

Gibbons Drive/Northwood Drive/Southwood Drive

- Reconfigure this intersection by installing a neighborhood traffic circle
- Conduct a stop warrant engineering analysis to determine if this location meets the warrants for an all-way stop controlled intersection. [Installation of stop-controlled intersections are governed by state law and warrants must be met before installation can be completed]
- Mark high-visibility crosswalks across all approaches
- Install appropriate red curb/parking restriction signage at this intersection**
- Consider installing speed cushion/speed bumps on Gibbons Drive and Southwood Drive east of the intersection. Consider converting the crosswalk at Northwood Drive/Buena Vista Avenue to a raised crosswalk (not symbolized on map)

PAST IMPROVEMENTS:

- Refreshed 4 existing high-visibility crosswalks.
- Installed no U-turn sign for EB Buena Vista Ave.
- Installed daylighting.

PAST IMPROVEMENTS:

- Refreshed 4 existing high-visibility crosswalks.
- Installed advance stop bars.
- Installed daylighting.

PAST IMPROVEMENTS:

- Installed daylighting.
- Current pavement markings are in good condition.

PROPOSED IMPROVEMENTS:

- City will consider this item for Alameda Safe Routes to School Infrastructure.

PAST IMPROVEMENTS:

- Refreshed all 4 crosswalk striping.
- Installed daylighting.
- Installed advance stop bars.
- Refreshed centerline striping.
- Replaced “4-way” plaque with current standard “all-way” plaque.

PAST IMPROVEMENTS:

- Installed daylighting.
- Current pavement markings are in good condition.

PAST IMPROVEMENTS:

- Installed KEEP CLEAR markings and signage.
- Refreshed 1 existing high-visibility crosswalk.
- Refreshed STOP markings.
- Installed 1 high-visibility crosswalk on S leg.
- Installed 2 crosswalks on E and W legs.
- Installed yield lines for N and S crossings.
- Installed centerline striping on E and W approaches.

PROPOSED IMPROVEMENTS:

- RRFB system.

Existing Conditions

Existing Crossing Guard Location

Existing School Access Point

Existing Curb Parking Restrictions

Existing Bike Parking

Recommendations

Recommended Curb Parking Restrictions

Recommended Advanced Stop Pavement Marking

Recommended Curb Ramp

Recommended Yellow High-Visibility Crosswalk

Recommended White High-Visibility Crosswalk

Recommended R3-4 “No U-Turn” Signage

Recommended Advance Yield Markings

Recommended Transverse Crosswalk

Recommended R1-5 Yield Here to Pedestrians Signage

Recommended Pedestrian Actuated Beacon

Recommended Traffic Circle

Recommended Stop Control

Implementing Agency

City of Alameda

*The above items are recommendations only and based on Safe Routes to Schools site assessment best practices. Feasibility determination, final design, accessibility, funding, and implementation of any recommended improvements is the responsibility of the appropriate governing agency.
**Red curb and/or parking restriction signage should be provided between advance stop/yield markings and the crosswalk. Exact red curb distance should be determined in accordance with the CA-MUTCD and City policies/standards. Red curb not symbolized on map.

Franklin Elementary School Alameda

Safe Routes to Schools Improvement Plan

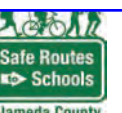
Site Assessment held May 2017

- 1 Central Avenue / Sherman Street / Encinal Ave**
 - Consider upgrading traffic signal with pedestrian countdown signal
 - Upgrade existing crosswalks to high visibility crosswalks
- 2 Central Avenue / Morton Street**
 - Install high visibility crosswalk at west leg
 - Install school crossing assembly B signage where shown
- 3 Central Avenue / Alameda Avenue**
 - Install high visibility crosswalk at west and north legs
 - Install transverse crosswalk at southwest leg
 - Install school crossing assembly B signage where shown
- 4 Encinal Avenue / Benton Street**
 - Install high visibility crosswalks at north and east legs as shown
 - Install advance yield markings and school crossing assembly B signage at northwest and southeast approach
 - Install curb extensions at northwest and southwest corners
- 5 Alameda Avenue / Paru Street**
 - Install transverse crosswalks across Alameda Avenue
- 6 San Antonio Avenue / Morton Street**
 - Install high visibility crosswalks at all 4 legs
- 7 Encinal Avenue / Paru Street**
 - Install curb extensions at southwest and northwest corners
- 8 San Antonio Avenue / School Frontage**
 - Upgrade existing crosswalk to raised high visibility crosswalk and install advance yield markings where shown
- 9 San Antonio Avenue / Paru Street**
 - Install high visibility crosswalks at all 4 legs
- 10 San Antonio Avenue / Grand Street**
 - Install high visibility crosswalks at all 4 legs
 - Install advance yield markings and school crossing assembly B signage at northeast and southwest legs
 - Consider installing rectangular rapid flashing beacon across Grand Street
- 11 San Jose Avenue / Paru Street**
 - Install high visibility crosswalks at north and west legs
 - Install advance yield markings at east and west legs
- 12 San Jose Avenue / Grand Street**
 - Refresh high visibility crosswalk at northeast leg
 - Install advance yield markings at northeast and southwest approach

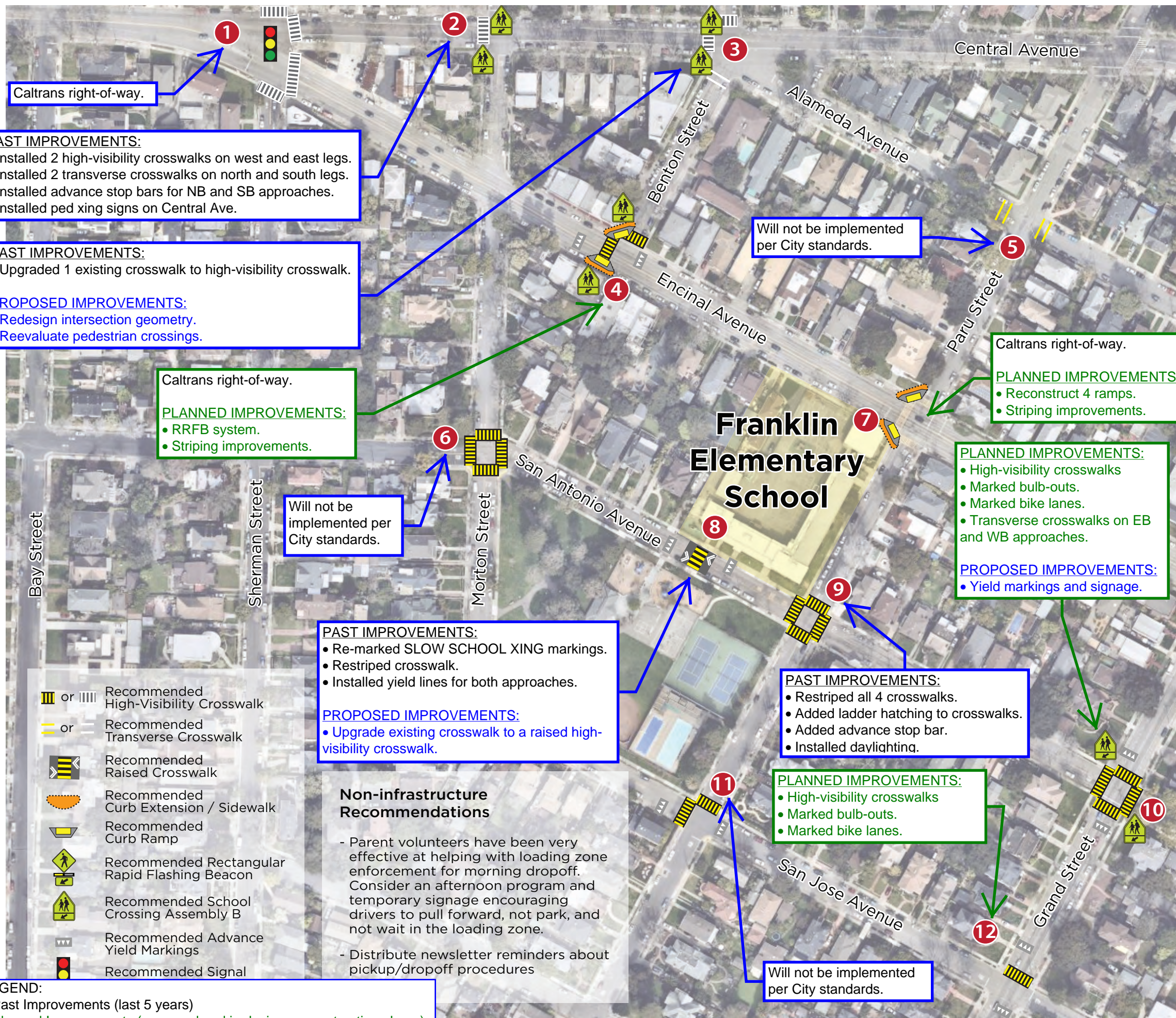
LEGEND:

- Past Improvements (last 5 years)
- Planned Improvements (approved and in design or construction phase)
- Proposed Improvements

Improvements not to scale
0 200 ft



Practices. Feasibility determination, final design, accessibility, funding, and implementation of any recommended improvements is the responsibility of the appropriate governing agency.



Love Elementary School

Henry Haight Elementary School

Alameda

Safe Routes to Schools Improvement Plan

Site Assessment held May 2016

- 1 Chestnut St. / Lincoln Ave. Intersection**
Install high visibility crosswalks and advance stop bars to improve visibility of crossings.
- 2 Chestnut St. / Santa Clara Ave. Intersection**
Install high visibility crosswalks and advance stop bars to improve visibility of crossings.
- 3 Santa Clara Ave. Drop-Off**
Consider establishing student pick-up/ drop-off procedures to improve the efficiency of the loading zone and to prevent cars from idling for too long.
- 4 Willow St. / Santa Clara Ave. Intersection**
- Install a high visibility crosswalk to improve visibility. of crossing
- Consider updating existing in-pavement lights to rectangular rapid flashing beacon.
- 5 Willow St. / Lincoln Ave. Intersection**
Consider installing high visibility crosswalks, advance stop bars, and rectangular rapid flashing beacons to improve visibility of crossing.
- 6 Lincoln Ave. Drop-off**
Consider establishing student pick-up/ drop-off procedures to improve the efficiency of the loading zone and to serve as an alternative to Santa Clara Avenue.
- 7 Bicycle Parking**
The school district should install fence for secure bicycle parking.

Non-Infrastructure Recommendations

- Conduct training and education for parents about safe drop-off procedures.
- Explore funding opportunities for additional bicycle racks and bicycle locks.

The above items are recommendations from the Alameda County Transportation Commission and are based on Safe Routes to Schools site assessment best practices. Any additional reviews and final recommendations are subject to the standards and regulations of the appropriate governing agencies.



LEGEND:

- Past Improvements (last 5 years)
- Planned Improvements (approved and in design or construction phase)
- Proposed Improvements

PAST IMPROVEMENTS:

- Installed daylighting.
- Refreshed 4 faded crosswalks.
- Installed ladder hatching.
- Refreshed/installed 50' centerlines.
- Replaced faded signage.

PROPOSED IMPROVEMENTS:

- Training and facilitating of loading zone.

PAST IMPROVEMENTS:

- Installed 4 high-visibility crosswalks.

PROPOSED IMPROVEMENTS:

- Install a fence for secure bicycle parking.
- Additional bike racks and locks.

PAST IMPROVEMENTS:

- Installed daylighting.
- Restriped 4 crosswalks and upgraded to high-visibility crosswalks.
- Added ladder hatching.
- Restriped centerlines.

PROPOSED IMPROVEMENTS:

- Install advance stop bars.

PAST IMPROVEMENTS:

- Installed all-way stop signs.
- Installed 2 high-visibility crosswalks.

PROPOSED IMPROVEMENTS:

- Training and facilitating of loading zone.

LEGEND

Existing rectangular rapid flashing beacon

Recommended high visibility crosswalk

Improvements not to scale.

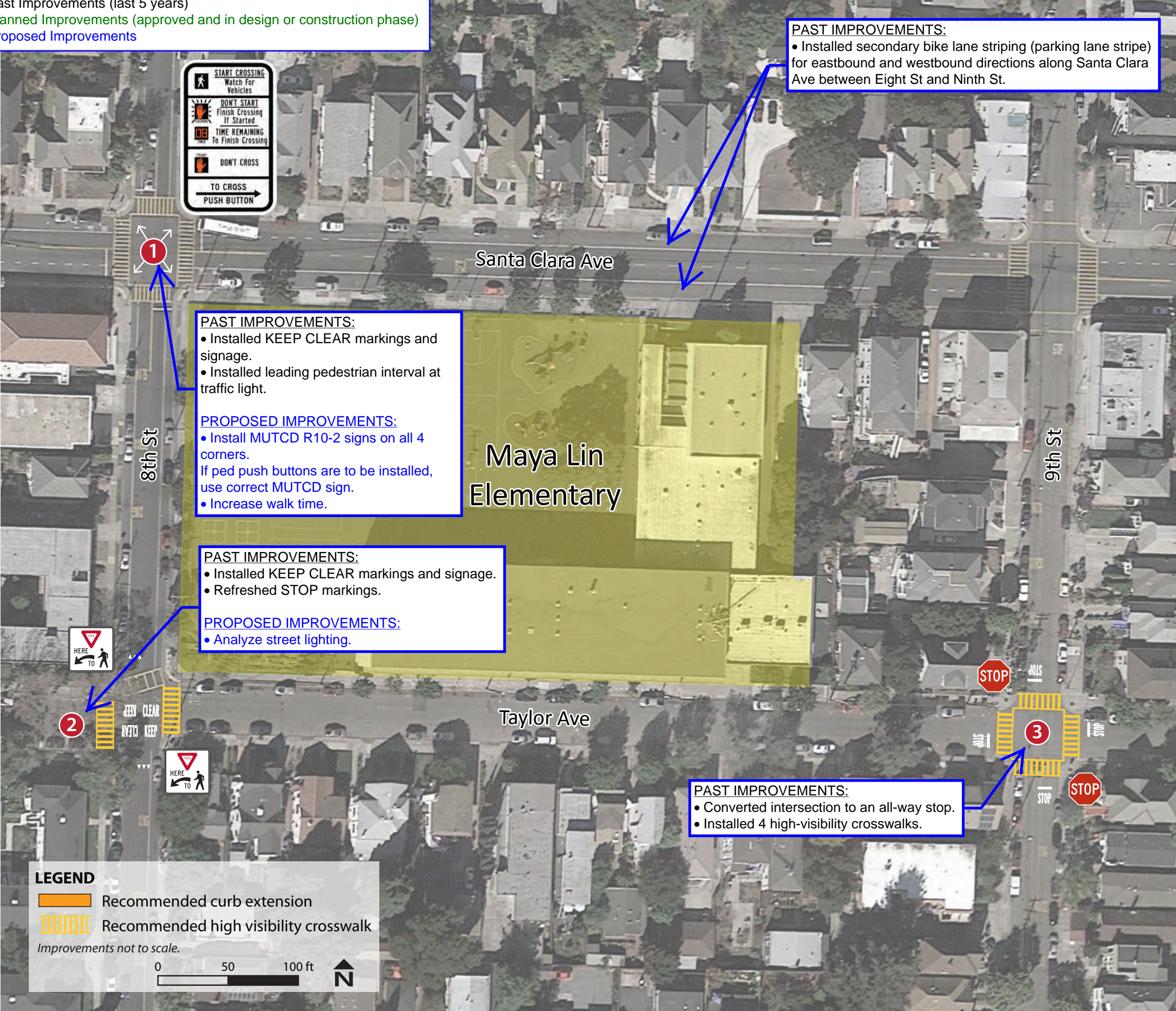
0 50 100 ft

Maya Lin Elementary, Alameda
Safe Routes to Schools Improvement Plan
Site Assessment held February 2016

- 1 Santa Clara Ave / 8th St**
 - Install R10-3e signs at all four corners to facilitate pedestrian crossing.
 - Consider increasing walk time to facilitate pedestrian crossing.
- 2 8th St / Taylor Ave**
 - Install "Keep Clear" pavement markings.
 - Install high-visibility crosswalks across Taylor Ave.
 - Consider installing advance yield markings and signage on 8th St.
 - Consider studying improvements to address low lighting conditions.
- 3 9th St/ Taylor Ave**
 - Convert intersection to 4-way stop.
 - Install stop signs and advanced stop markings on 9th St.
 - Install advanced stop markings on Taylor Ave.
 - Install high-visibility crosswalks at all crossings.

The above items are recommendations from the Alameda County Transportation Commission and are based on Safe Routes to Schools site assessment best practices. Any additional reviews and final recommendations are subject to the standards and regulations of the appropriate governing agencies.

LEGEND:
• Past Improvements (last 5 years)
• Planned Improvements (approved and in design or construction phase)
• Proposed Improvements



Nea Community Learning Center Alameda

Safe Routes to Schools Improvement Plan

Site Assessment held April 2017

- 1 Atlantic Avenue / Third Street**
 - Install high visibility crosswalks at all 4 legs
 - Consider upgrading Third Street bike route markings from standard to green-backed shared lane markings
- 2 Atlantic Avenue / Cross Alameda Trail**
 - Connect the Nea Community Learning Center campus to the planned Cross Alameda Trail via the school's existing bicycle parking area.
- 3 Atlantic Avenue / Poggi Street**
 - Install high visibility crosswalks at north, south and west legs
 - Install accessible curb ramp at southeast corner
- 4 Third Street / School Frontage**
 - Modify existing "Loading Zone" signage to show arrow pointing only in the northern direction
 - Install updated accessible curb ramp where shown
 - Extend loading zone by installing white curb and R25D signage where shown
 - Establish 15 minute parking zone by installing green curb and R32D signage where shown (limit restrictions to school hours)
- 5 Third Street / Brush Street**
 - Install high visibility crosswalks
- 6 Third Street / Cypress Street**
 - Install high visibility crosswalks at north, east and west legs
 - Install advance yield markings and school crossing Assembly B signage at north and south legs

Improvements not to scale
0 200 ft



LEGEND:

- Past Improvements (last 5 years)
- Planned Improvements (approved and in design or construction phase)
- Proposed Improvements

PAST IMPROVEMENTS:

- Installed 4 high-visibility crosswalks.
- Installed advance stop bars.

PAST IMPROVEMENTS:

- Connected the campus bicycle parking area to the Cross Alameda Trail.

Nea Community Learning Center

PAST IMPROVEMENTS:

- Installed 4 high-visibility crosswalks.

PROPOSED IMPROVEMENTS:

- Install ADA-compliant curb ramp.
- Install 15-minute parking zone.
- Training and facilitating of loading zone and traffic rules.

PAST IMPROVEMENTS:

- Installed 3 high-visibility crosswalks at north, south, and west legs.
- Installed ADA-compliant curb ramp at SE corner.
- Installed advance stop bars.

PROPOSED IMPROVEMENTS:

- Install a high-visibility crosswalk at the E leg with ped ramps at the NE and SE corners.

Will not be implemented per City standards.

- Recommended High-Visibility Crosswalk
- Recommended Curb Ramp
- Recommended Advanced Stop Pavement Marking
- Recommended Advance Yield Markings
- Recommended Green Curb
- Recommended White Curb
- Recommended R25D Signage
- Existing Crossing Guard Location
- Recommended School Crossing Assembly B
- Recommended Upgraded Bicycle Route
- Planned Cross Alameda Trail
- Existing Bicycle Parking Area

Wood Middle School Alameda

Safe Routes to Schools Improvement Plan

Site Assessment held April 2016

- 1 Grand St. Bicycle Lane**
- Refresh paint on Grand St. to make Class II bicycle lane more visible and provide space for bicyclists.
- 2 Grand St. Sidewalk Improvements**
Repair cracked sidewalk.
- 3 Parking Lot Circulation**
The school district should install "Pull Forward" pavement stencils and signage to encourage vehicles to pull forward and reduce queuing onto Grand St.
- 4 Grand St. Median**
Trim overgrown vegetation in median to improve sight line visibility.
- 5 Grand St. Crossing**
Install rectangular rapid flashing beacon (RRFB) and yield lines to improve pedestrian and bicyclist visibility while crossing.
- 6 Grand St. / Otis Dr. Intersection**
- Install high visibility crosswalks and advance stop bars to improve pedestrian visibility.
- Consider installing a leading pedestrian interval to allow more crossing time.
- 7 Otis Dr. / Waterview Isle Intersection**
Install curb extensions, RRFBs, and a median refuge to shorten crossing distance.
- 8 Grand St. / Shoreline Dr. Intersection**
Install signage, advance stop bar, and 2-stage turn box to improve safety for cyclists.

Non-Infrastructure Recommendations

Conduct educational program to encourage students to wear helmets.

The above items are recommendations from the Alameda County Transportation Commission and are based on Safe Routes to Schools site assessment best practices. Any additional reviews and final recommendations are subject to the standards and regulations of the appropriate governing agencies.

PAST IMPROVEMENTS:

- Trimmed overgrown vegetation.
- Installed daylighting.
- Installed new reflective tape around bollards.
- Installed school xing signs on median.

PAST IMPROVEMENTS:

- Installed protected intersection.
- Installed high-visibility crosswalks.
- Installed advance stop bars.
- Installed buffered bike lanes.
- Installed concrete islands.
- Installed daylighting.
- Installed speed limit signs.

PROPOSED IMPROVEMENTS:

- Install leading pedestrian interval.

PAST IMPROVEMENTS:

- Installed rapid flashing beacons.
- Added striped bulb-outs.
- Installed median pedestrian refuge.
- Installed buffered bike lanes.
- Installed ADA parking stall.

PAST IMPROVEMENTS:

- Installed speed limit signs.
- Refreshed striping and pavement markings.

PLANNED IMPROVEMENTS:

- RRFB system with yield lines.
- Separated bikeway along Grand from Shore Line to Palmer.

PROPOSED IMPROVEMENTS:

- Install PULL FORWARD markings and signage.





PAST IMPROVEMENTS:

- Refreshed bike lane striping.

PROPOSED IMPROVEMENTS:

- Repair cracked sidewalk.

LEGEND

-  Leading Pedestrian Interval Signal
-  Rectangular Rapid Flashing Beacon
-  Recommended Curb Extension
-  Recommended High Visibility Crosswalk

Improvements not to scale.

0 100 200 ft



LEGEND:

- Past Improvements (last 5 years)
- Planned Improvements (approved and in design or construction phase)
- Proposed Improvements