

Community Outreach Meetings

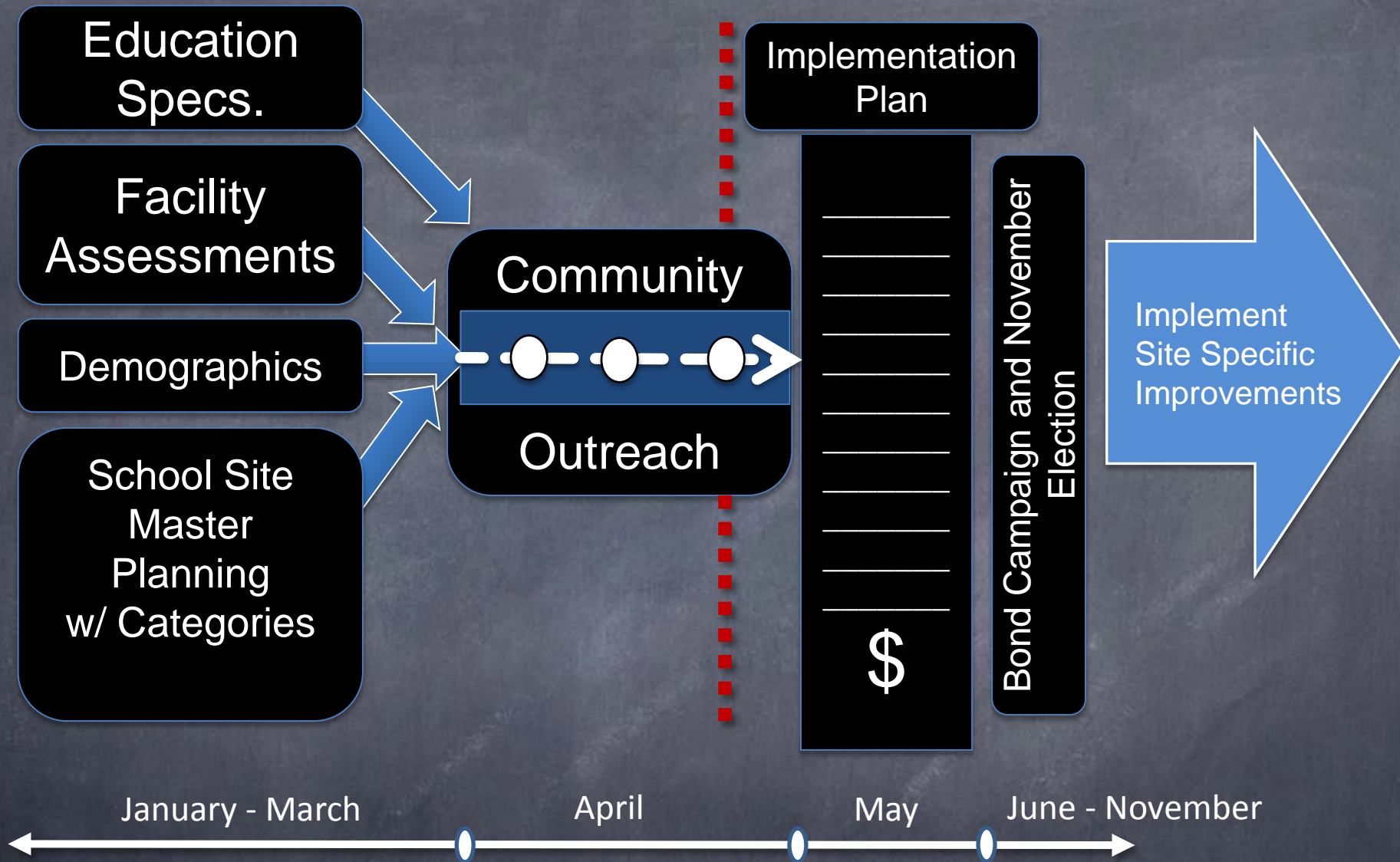
April 21, 24 & 30, 2014

Alameda Unified School District

Facilities Master Planning Process Update



QUATTROCCHI KWOK
ARCHITECTS



Elements of a Master Plan*

*Modified from Sept. 17, 2013 AUSD BOE presentation

Overview of Master Plan Process

- Master Plans are Long-Term Plans
 - Living Document – regularly revisited & revised
- Completed:
 - Facilities Assessments
 - Demographic Update
 - Education Specifications
- Obtain User and Community Input
 - Nearly 60 Individual School Master Planning meetings – 400 attendees
 - First Two Community Outreach Meetings

Overview of Master Plan Process

- Master Plan Drawings Created for Each Campus
 - Developed by school/community Site Planning groups
 - Input during two Community Outreach meetings
- Planning Groups Developed Improvement Categories
 - Critical Facilities Needs
 - Educational Program Needs
 - Future Facilities Needs
- Currently Cost Estimating Master Plans
- Creating Draft Facilities Master Plan Document

Review of Community Outreach Input

Presented Master Plans and Received Input – 4/21 & 4/24

- Held community discussions
- Received comments on master plan drawings & comment cards
- **Safety & Security**
 - Balance making schools welcoming with types & amount of fencing
 - Desire for schools to be inviting
 - Balance drop-off & parking with encouraging walking & biking
 - Re-key schools including using card-keys
- **Green Spaces**
 - Balance need for parking & drop-off with landscaping
 - Many comments to remove master plan drop-off & parking changes
 - “More green space” - “Need grass & trees” - “Keep green space”
 - Preferences for natural grass fields over synthetic turf

Review of Community Outreach Input

- School Gardens

- Preserve existing gardens and expand to other schools
- Enlarge some gardens
- Interest in farm-to-table program

- Additional Campus Comments

- Discussions of one versus two high schools – cost considerations
 - “Have one high school”
- “Tear down Wood & build one middle school for west side”
- “Too many elementary schools”

Review of Community Outreach Input

- Alameda High School – General Comments
 - Option 2 overwhelming preference (none for Option 1)
 - Option 2 uses historic buildings for high school
 - “Option 2 Rocks” – “Love open space, café & student union” - “Maximizes opportunities for future use” – “Alumni love these buildings”
 - Upgrade Kofman Auditorium
- Encinal High School – General Comments
 - “Give Encinal a real theater” – “Encinal needs a theater”
 - Vocational and CTE spaces are important
 - Provide growth space for Junior Jets

Review of Community Outreach Input

- Middle Schools – General Comments
 - Support new gyms
 - Improved science spaces
 - Shade areas needed
- Elementary Schools – General Comments
 - Maintain afterhours access to fields and playgrounds
 - Provide science flex spaces
 - Need places for art supply storage
 - Interest in library/ media center improvements

Next Steps

- Summarize and Incorporate Community Outreach Findings into Facilities Master Plan
- Publish Draft Facilities Master Plan
- Board Meetings - May 13, 20 and 28
 - Board Review and Approval of final Facilities Master Plan
 - Development of Priorities for Upcoming Bond
- Prepare for November Bond

Questions & Discussion



Master Plan Categories

Facilities Master Plan - Categories

Category 1: Critical Facility Needs (CFN)

Improvements to meet code requirements, student safety, building infrastructure systems and preservation of buildings from the deleterious impacts of the environment. Examples include:

- ADA – Code Compliancy to the Americans with Disabilities Act
- Roofing Repair or Replacement
- Building Weather Protection, Including Windows, Siding & Exterior Doors
- Mechanical, Plumbing, Electrical, Utility Systems Repair or Replacement
- Security/Student Safety Upgrades
- Improvements for Student Safety such as Pedestrian Paths or Unsafe Vehicular Traffic Crossing
- Notification Systems (phones and intercoms)

Facilities Master Plan - Categories

Category 2: Educational Program Needs (EPN)

Improvements that impact the student learning environment and support the District's Educational Program/ Education Specifications. EPN improvements will impact more than just classrooms.

Examples include:

- Spaces Needed for Enrollment Capacity
- Information Technology Improvements
- Architectural Upgrades, Including Finishes & Cabinetry
- Outdoor Learning Environments and Libraries
- PE and Playground Improvements Including Fields
- Energy Efficiencies Upgrades
- Parking & Traffic – not identified in CFN
- Site Improvements, such as Drainage or Paving

Facilities Master Plan - Categories

Category 3: Future Facility Needs (FFN)

Improvements not covered under Critical Facilities Needs or Educational Program Needs.

Provides desired improvements that may include aesthetic considerations, optional upgrades or other non-critical but desired work to each school.

School Master Plans

Bay Farm Elementary School



BAY FARM ELEMENTARY SCHOOL SITE PLAN

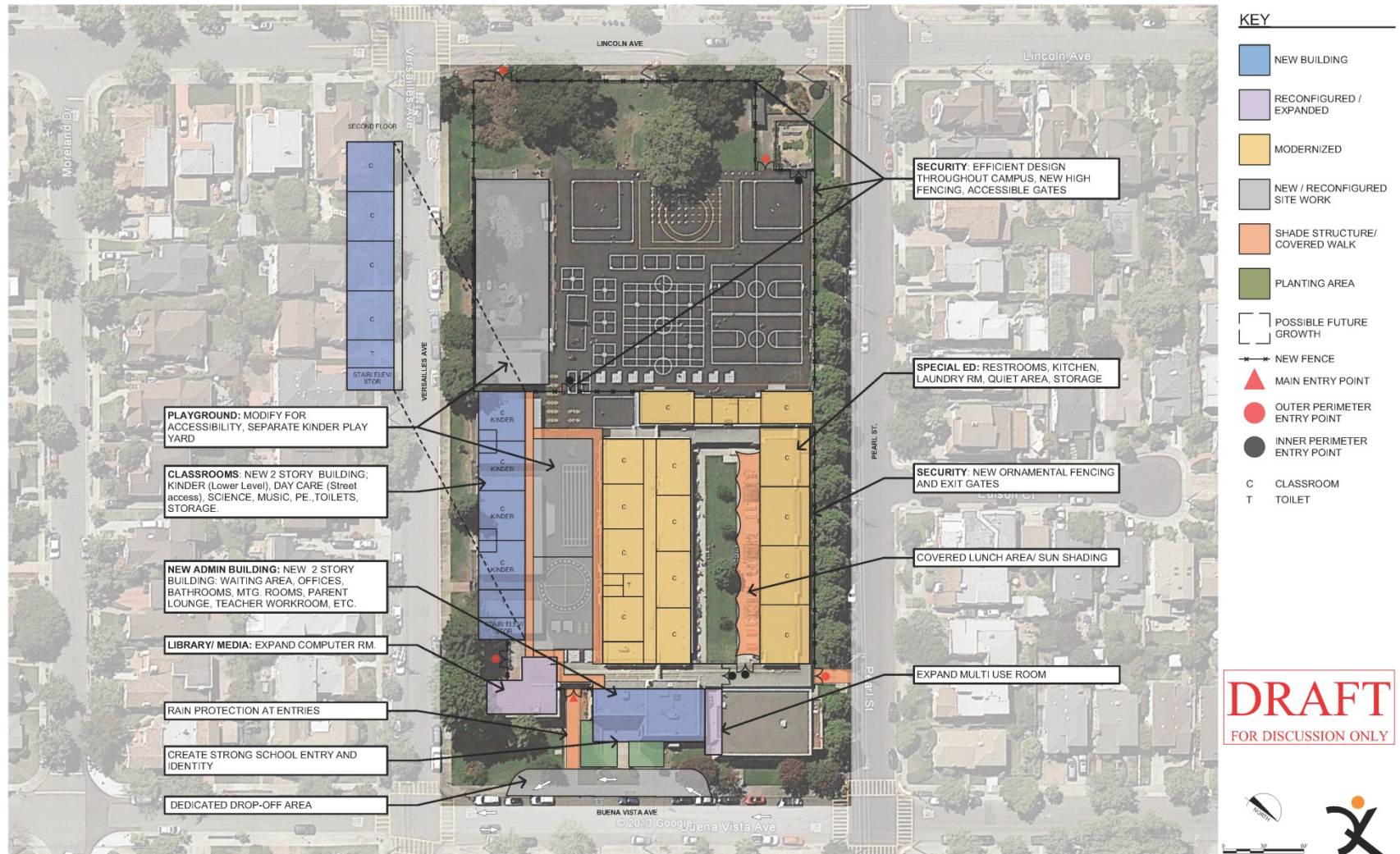
DRAFT
FOR DISCUSSION ONLY

Earhart Elementary School



EARHART ELEMENTARY SCHOOL SITE PLAN

Edison Elementary School



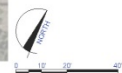
EDISON ELEMENTARY SCHOOL SITE PLAN

Franklin Elementary School

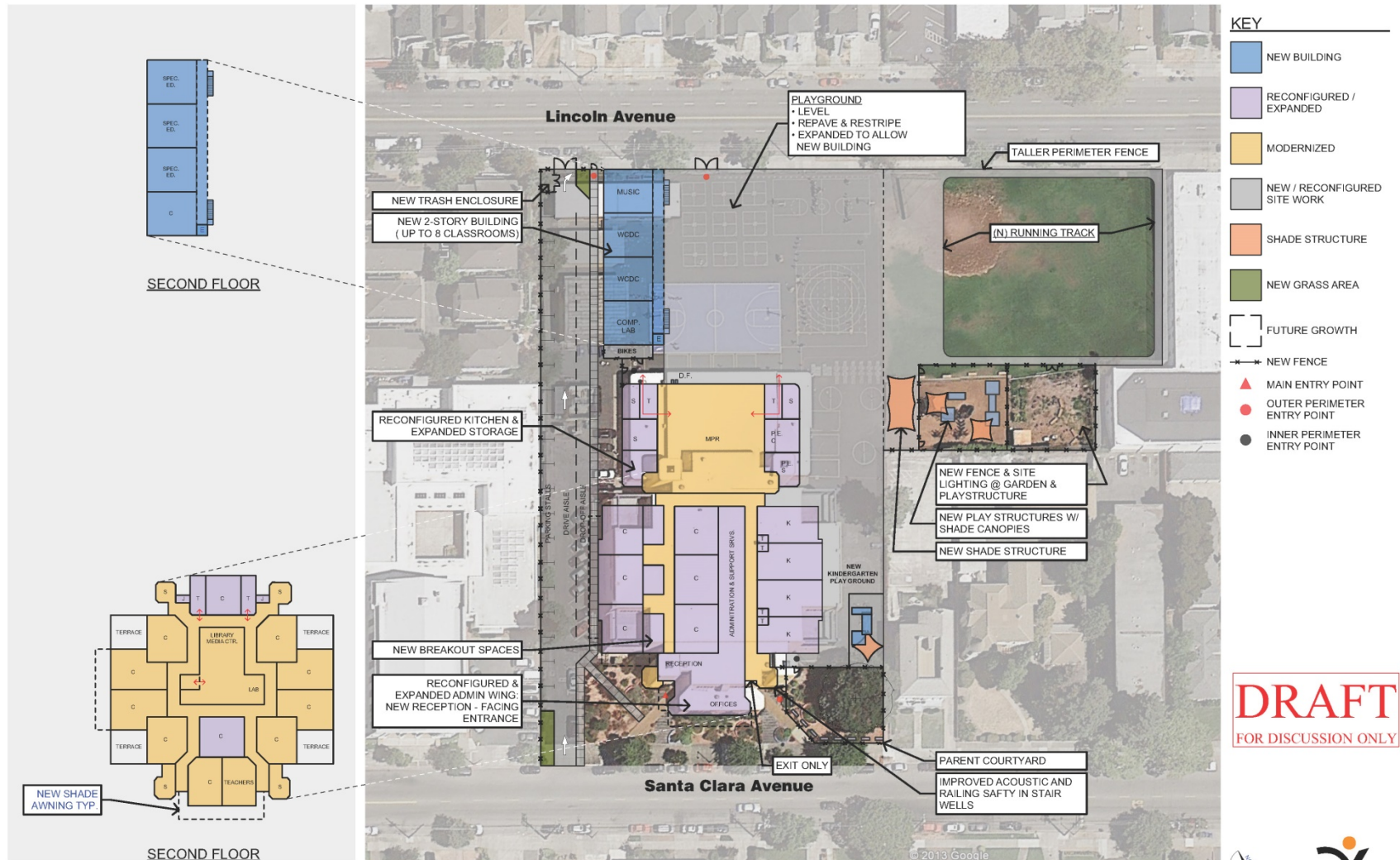


FRANKLIN ELEMENTARY SCHOOL SITE PLAN

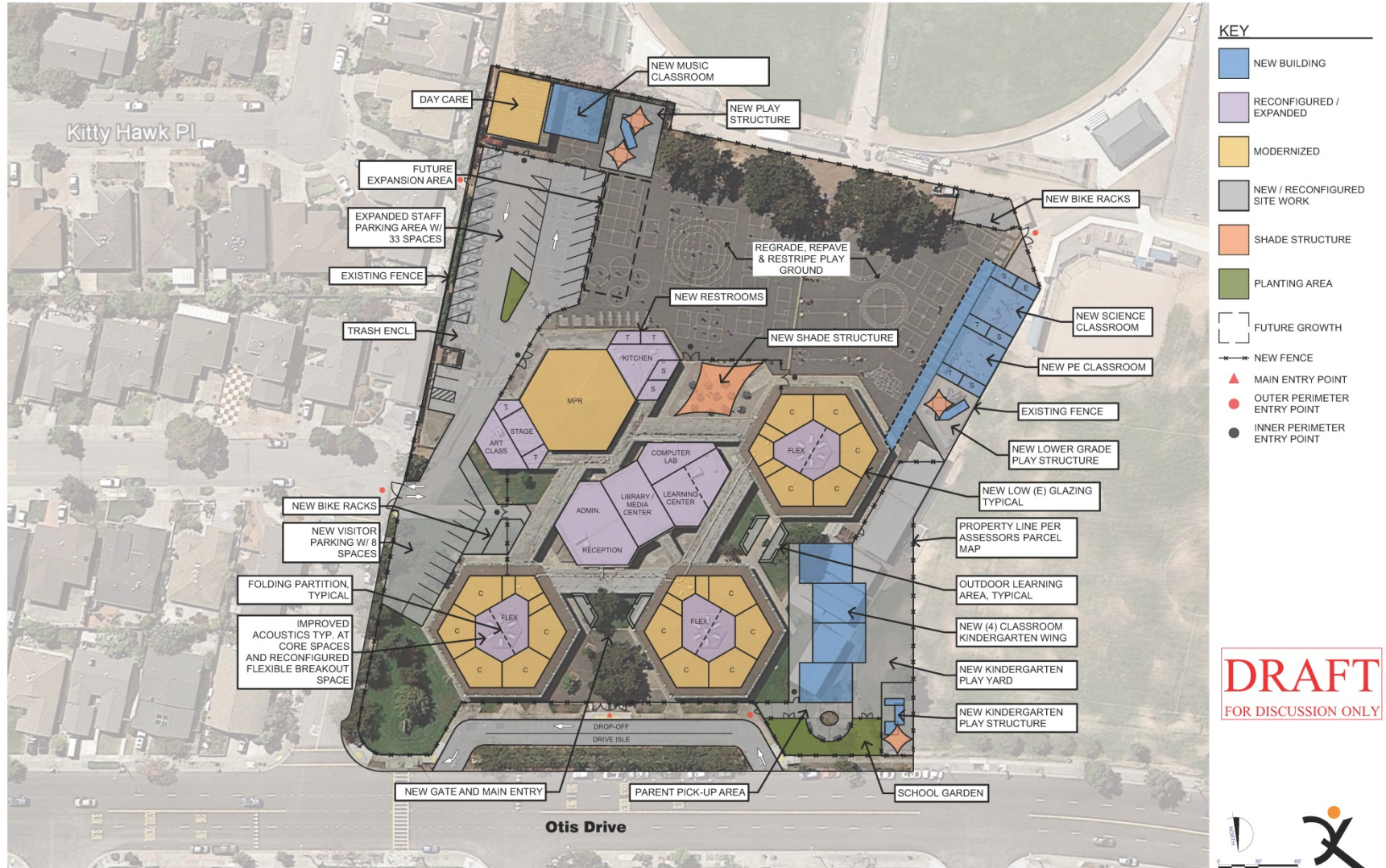
DRAFT
FOR DISCUSSION ONLY



Haigh Elementary School



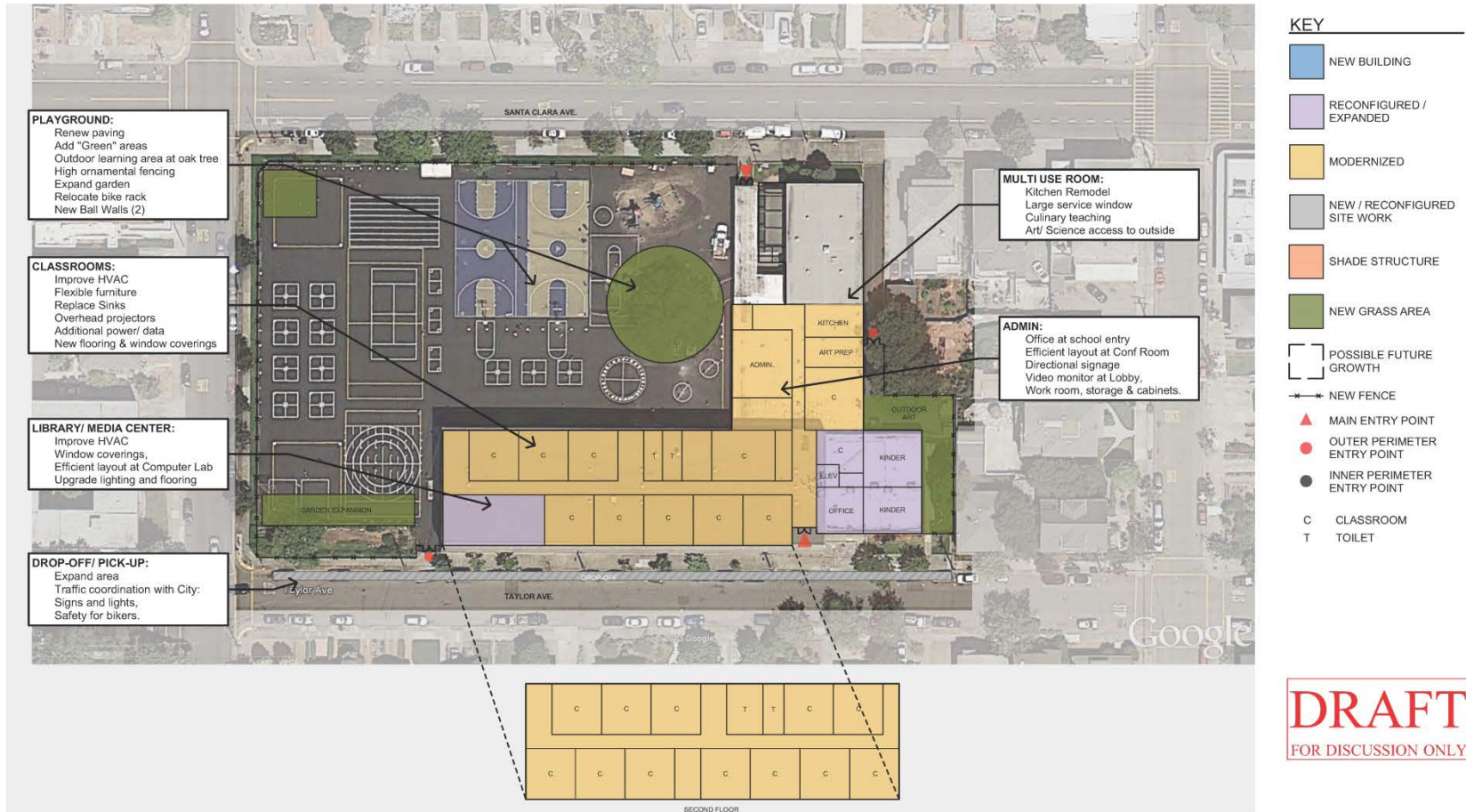
Lum Elementary School



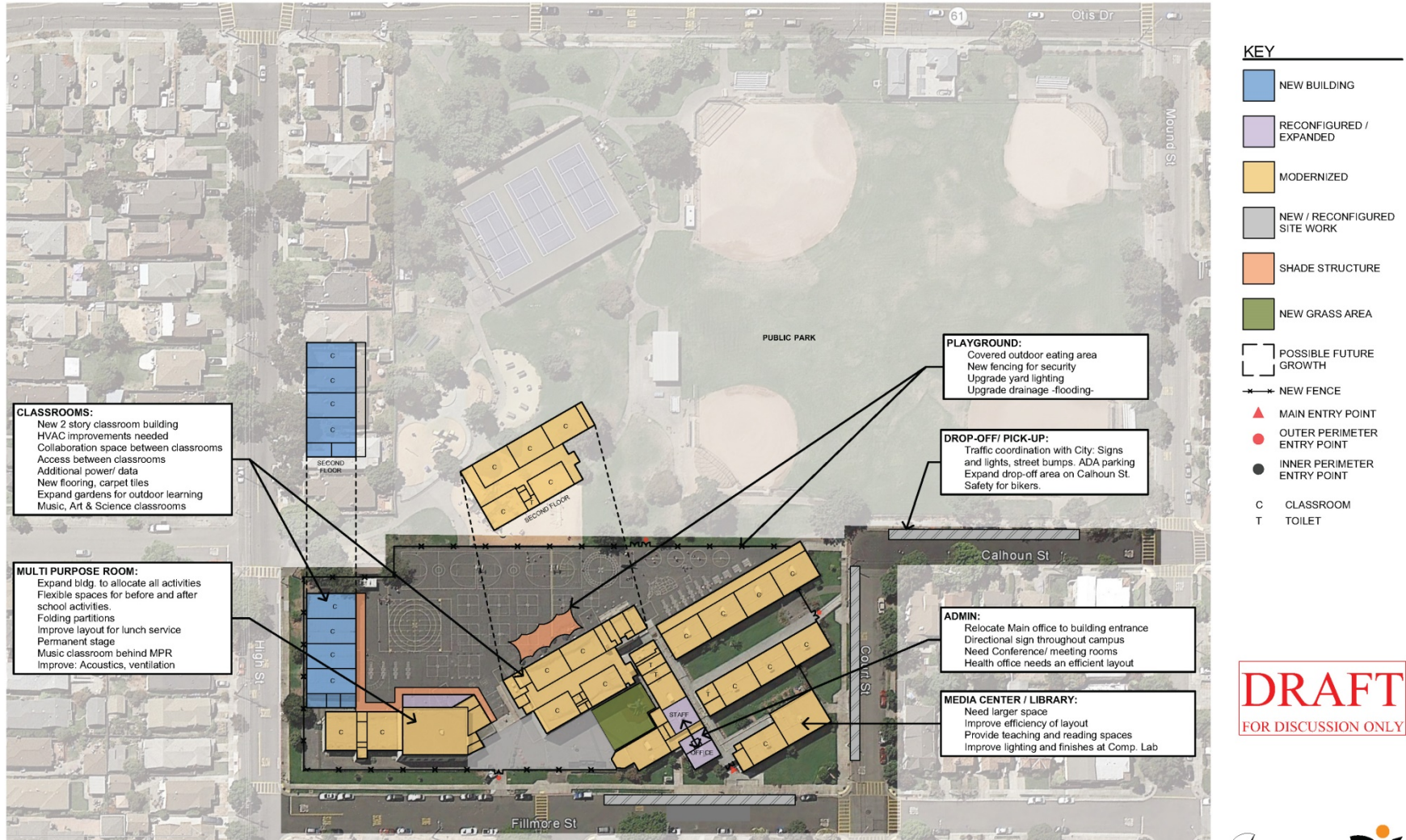
LUM ELEMENTARY SCHOOL SITE PLAN

DRAFT
FOR DISCUSSION ONLY

Maya Lin School



Otis Elementary School



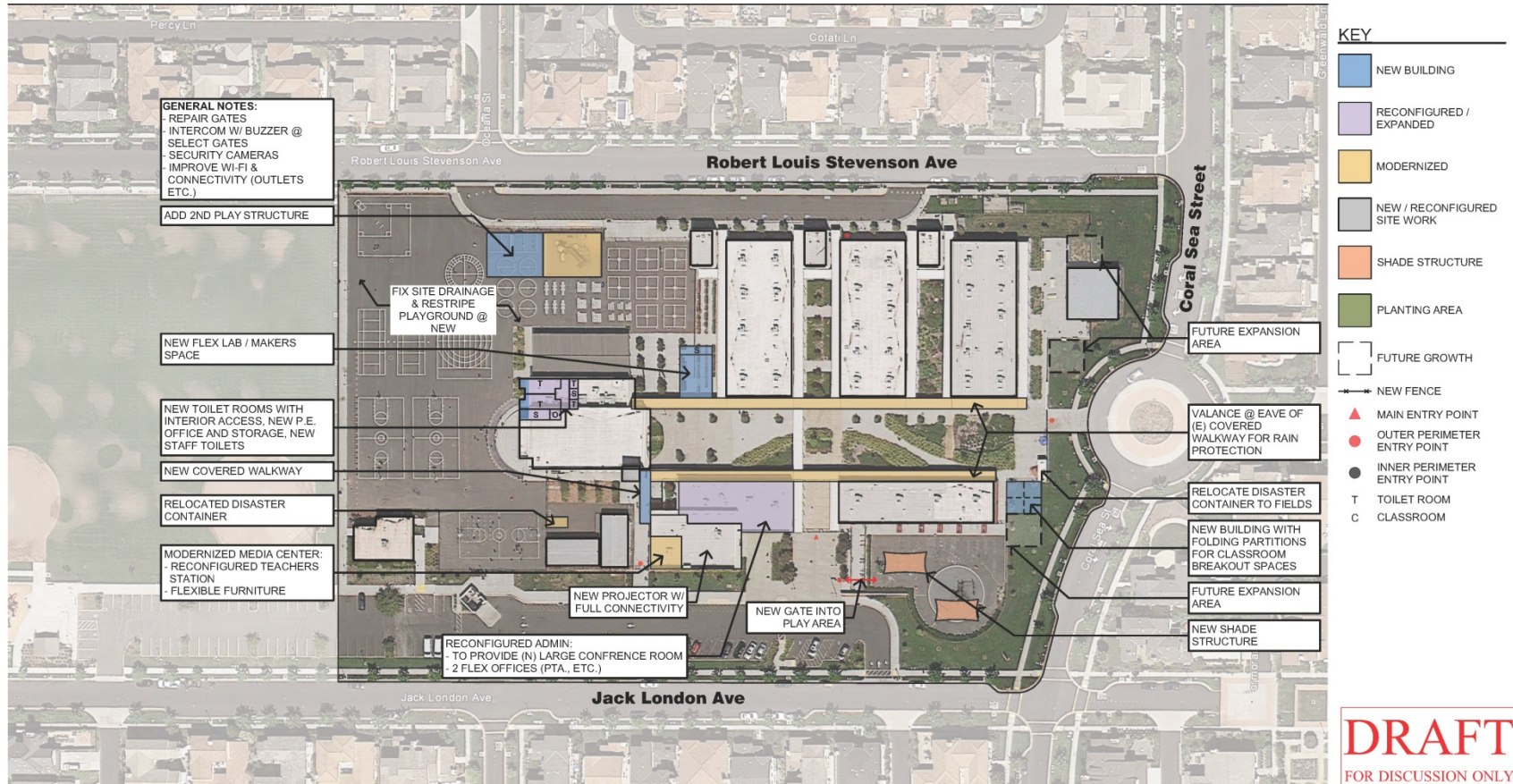
DRAFT
FOR DISCUSSION ONLY



Paden Elementary School



Ruby Bridges Elementary School



KEY

- NEW BUILDING
- RECONFIGURED / EXPANDED
- MODERNIZED
- NEW / RECONFIGURED SITE WORK
- SHADE STRUCTURE/ COVERED WALK
- PLANTING AREA
- POSSIBLE FUTURE GROWTH
- NEW FENCE
- MAIN ENTRY POINT
- OUTER PERIMETER ENTRY POINT
- INNER PERIMETER ENTRY POINT
- C CLASSROOM
- T TOILET

BIKE PATH:
Chain link fence and gates
Safety lighting

ADMIN:
Entrance identity
Directional signage
Enlarge front office & faculty room
Kitchen facilities
Storage & Cabinets

Outdoor learning, Art.

TRAFFIC/ PARKING:
Coordination w/ City for traffic flow
Re-configure parking flow
Additional parking for teachers
Add parking for parents

CLASSROOMS:
2 story classroom building required.
Switch location between Comp Lab and Science classroom.
Projection technology at all classrooms
Adequate Science classrooms
Add power outlets to ALL classrooms
Update HVAC systems to ALL classrooms
Safety door hardware
Add sinks to 900's classroom building

MULTI-MEDIA/ LIBRARY:
Expand computer lab,
Relocate book storage
Utilize not needed exits

NEW GYMNASIUM:
Appropriate for MS stds.

PLAYGROUND:
Covered lunch area
Covered Amphitheater
Re-striping, include door swings
Screen garbage bins
Exterior lighting

MPR/ MUSIC/ CAFE:
Area to eat lunch indoors
Improve lunch service layout
On site cooking
Music classroom

ENCINAL AVE

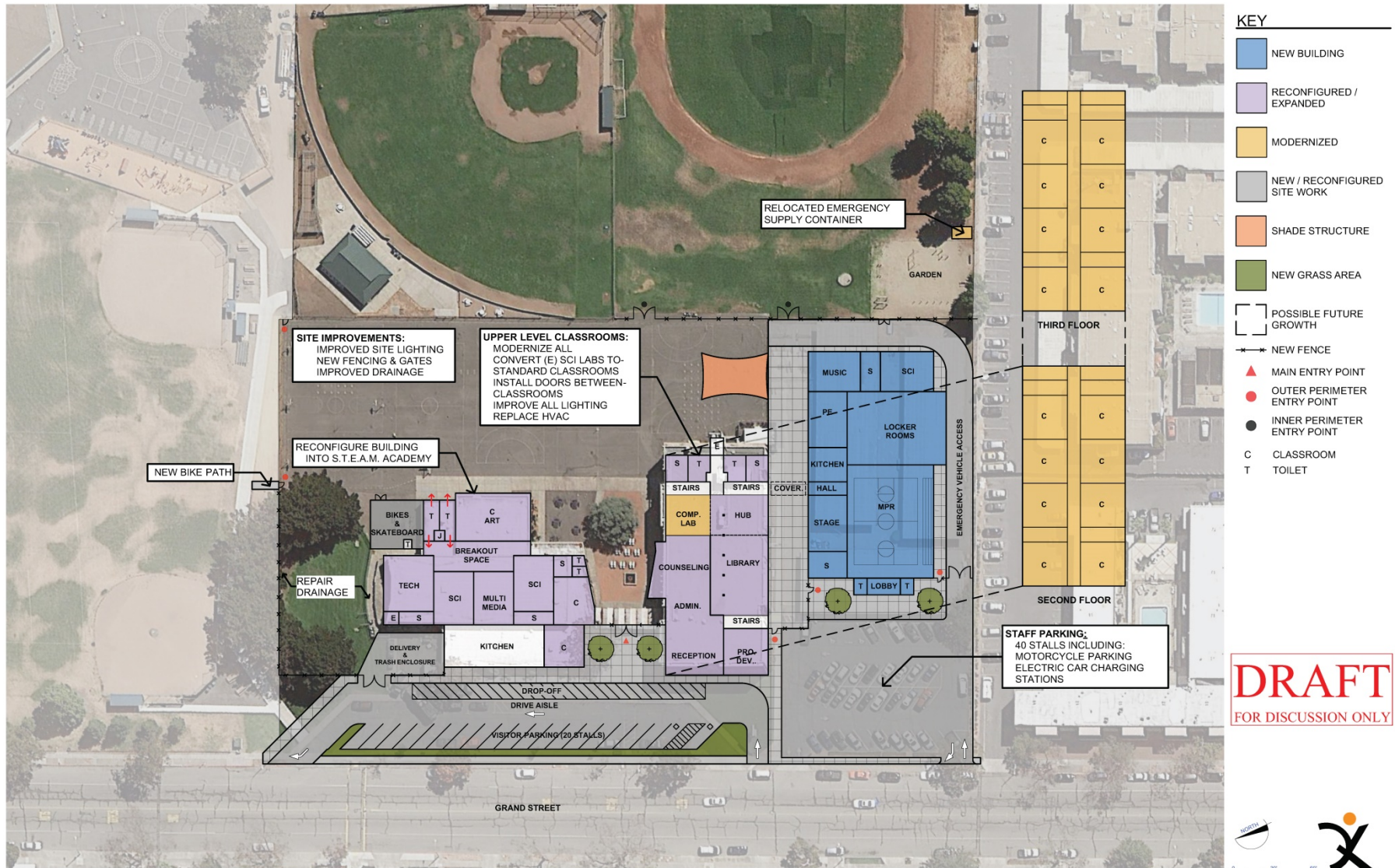
BAY FARM ISLAND BICYCLE BRIDGE

FERNSIDE BLVD

DRAFT FOR DISCUSSION ONLY

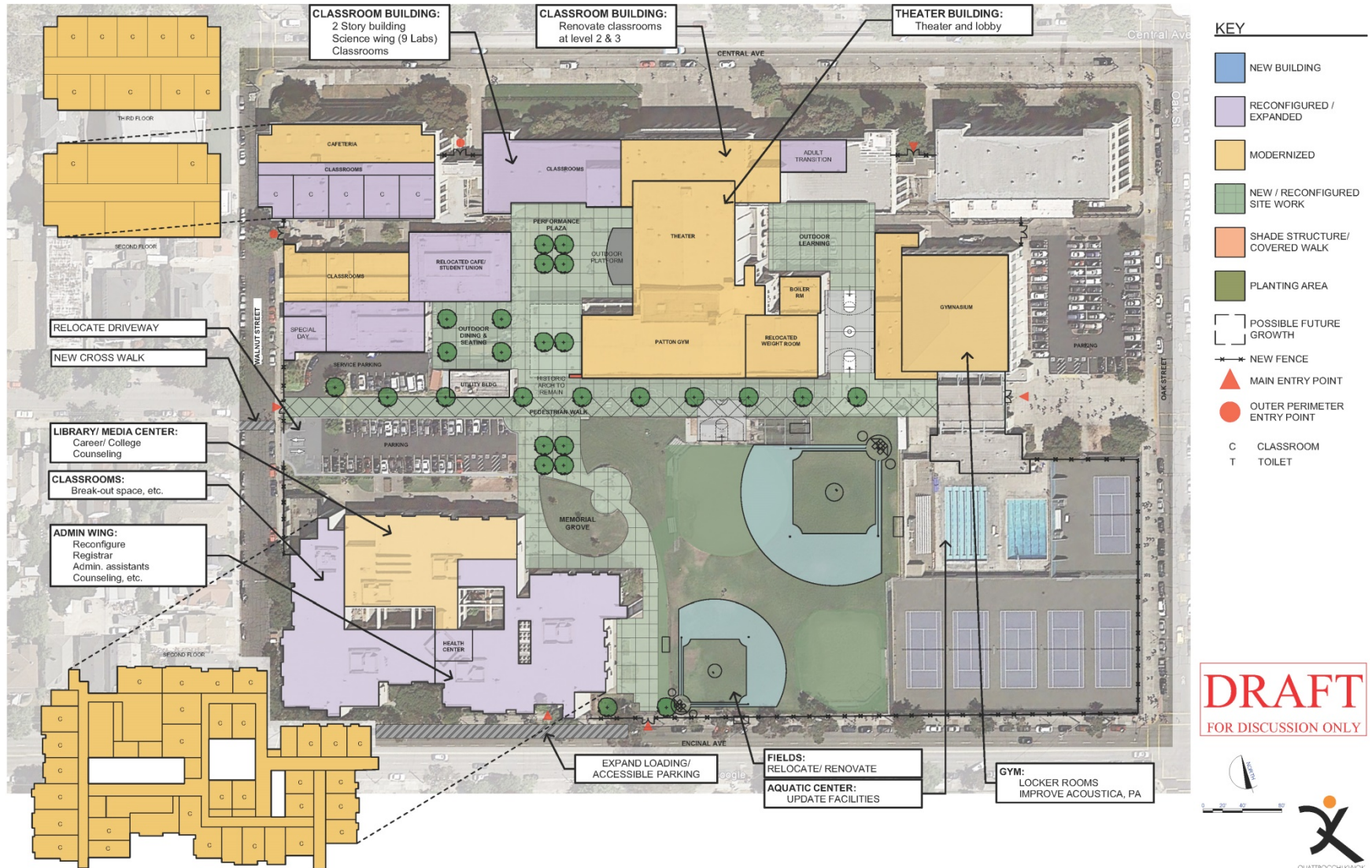
© 2013 Google

Wood Middle School



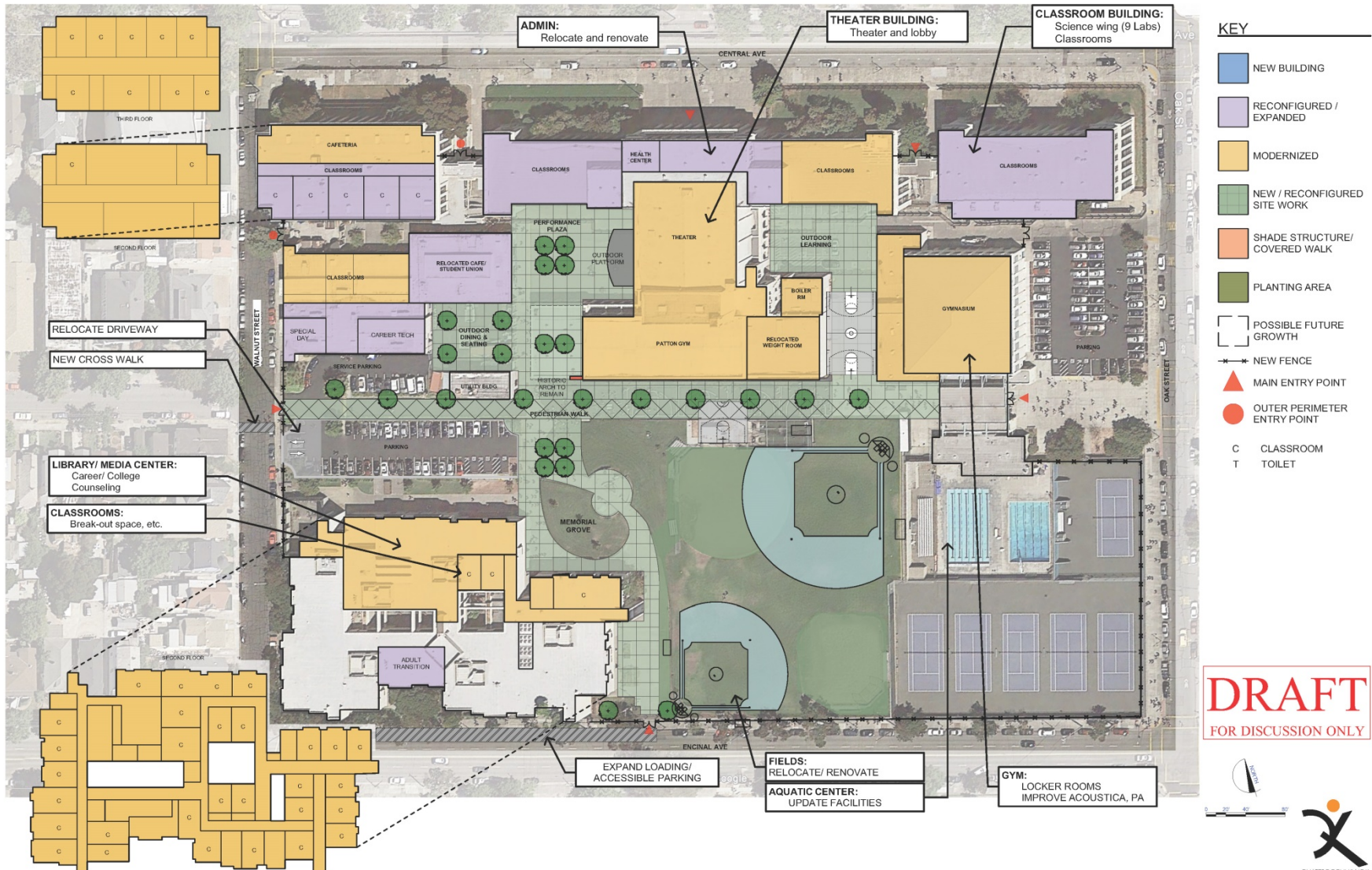
DRAFT
FOR DISCUSSION ONLY

Alameda High School – Option 1



ALAMEDA HIGH SCHOOL SITE PLAN - OPTION 1

Alameda High School – Option 2



ALAMEDA HIGH SCHOOL SITE PLAN - OPTION 2

DRAFT
FOR DISCUSSION ONLY

Thompson Field



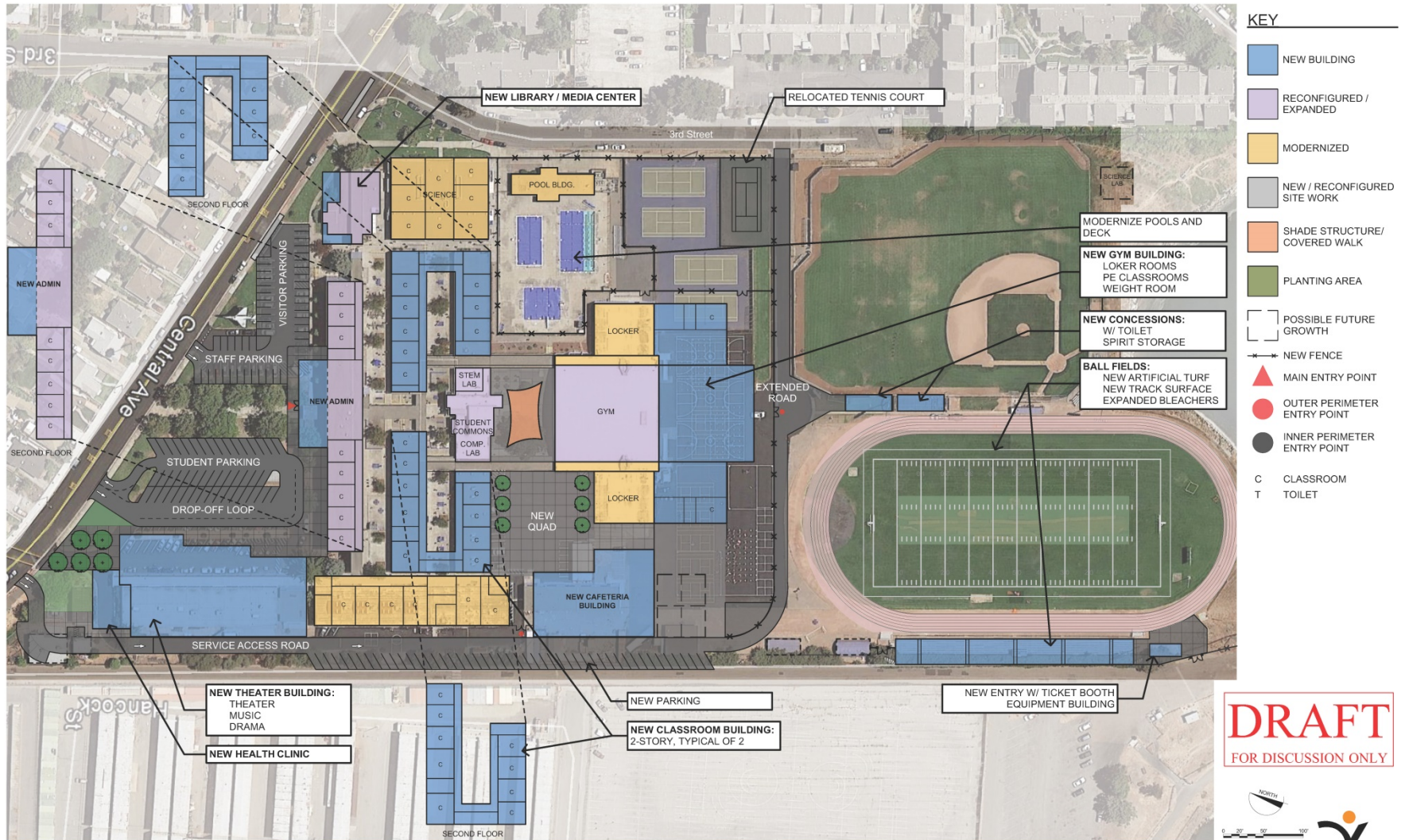
KEY

- NEW BUILDING
- RECONFIGURED / EXPANDED
- MODERNIZED
- NEW / RECONFIGURED SITE WORK
- SHADE STRUCTURE
- NEW GRASS AREA
- POSSIBLE FUTURE GROWTH
- NEW FENCE
- MAIN ENTRY POINT
- OUTER PERIMETER ENTRY POINT
- INNER PERIMETER ENTRY POINT
- CLASSROOM
- TOILET

DRAFT
FOR DISCUSSION ONLY



Encinal High School



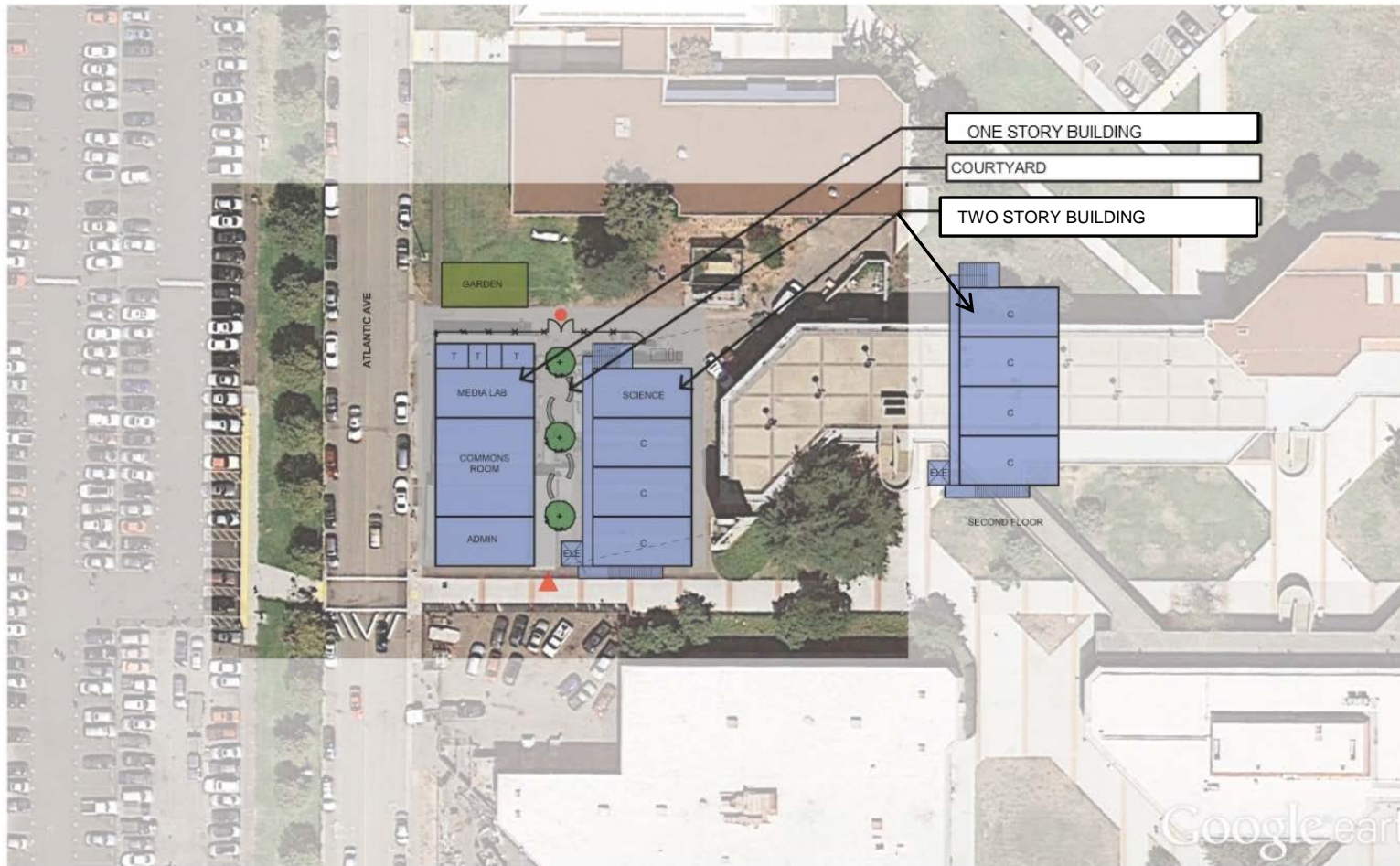
ENCINAL HIGH SCHOOL SITE PLAN

DRAFT
FOR DISCUSSION ONLY



ASTI High School and Charter School Sites

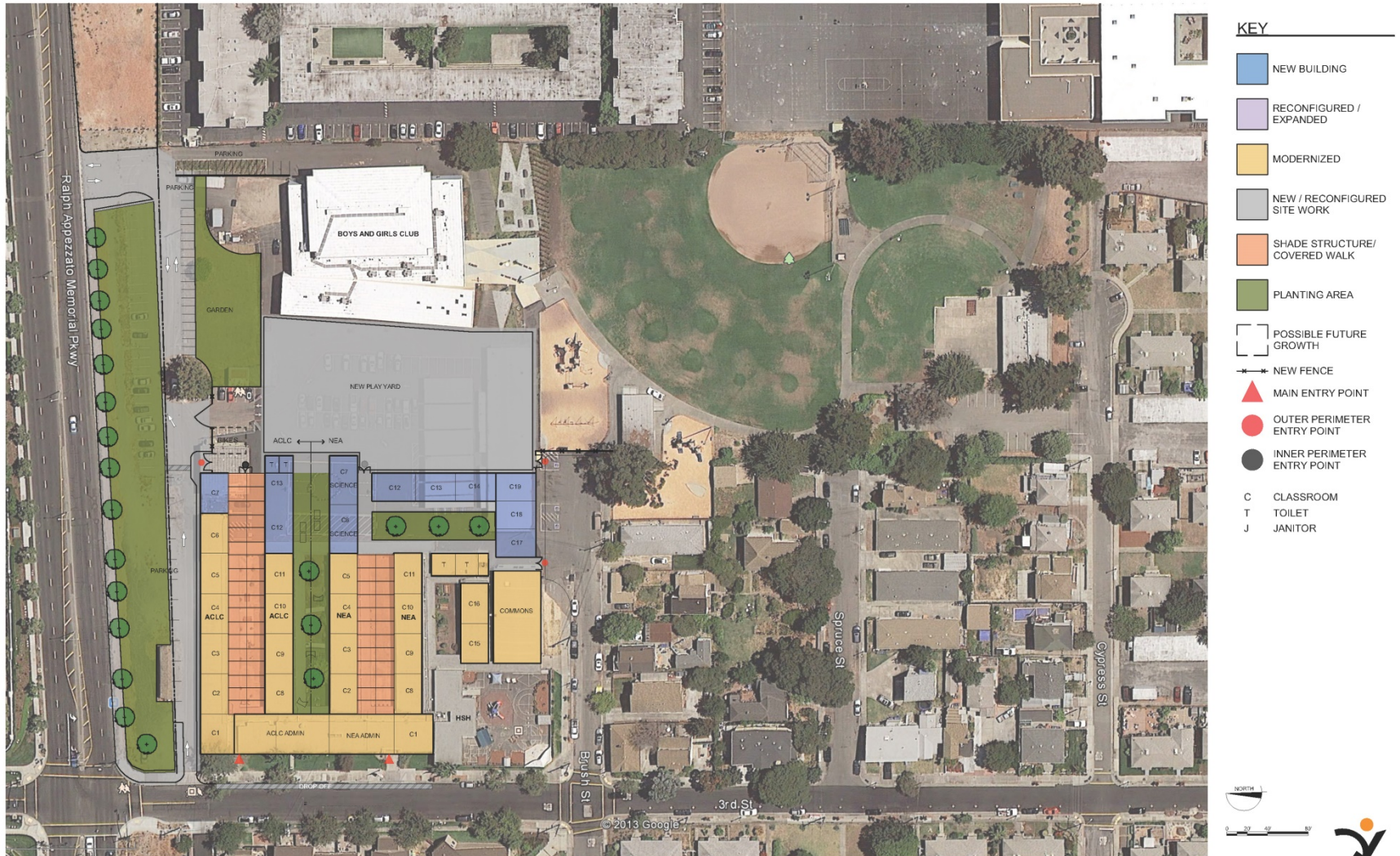
A.S.T.I. High School



KEY

- NEW BUILDING
- RECONFIGURED / EXPANDED
- MODERNIZED
- NEW / RECONFIGURED SITE WORK
- SHADE STRUCTURE/ COVERED WALK
- PLANTING AREA
- POSSIBLE FUTURE GROWTH
- NEW FENCE
- MAIN ENTRY POINT
- OUTER PERIMETER ENTRY POINT
- INNER PERIMETER ENTRY POINT
- C CLASSROOM
- T TOILET
- J JANITOR

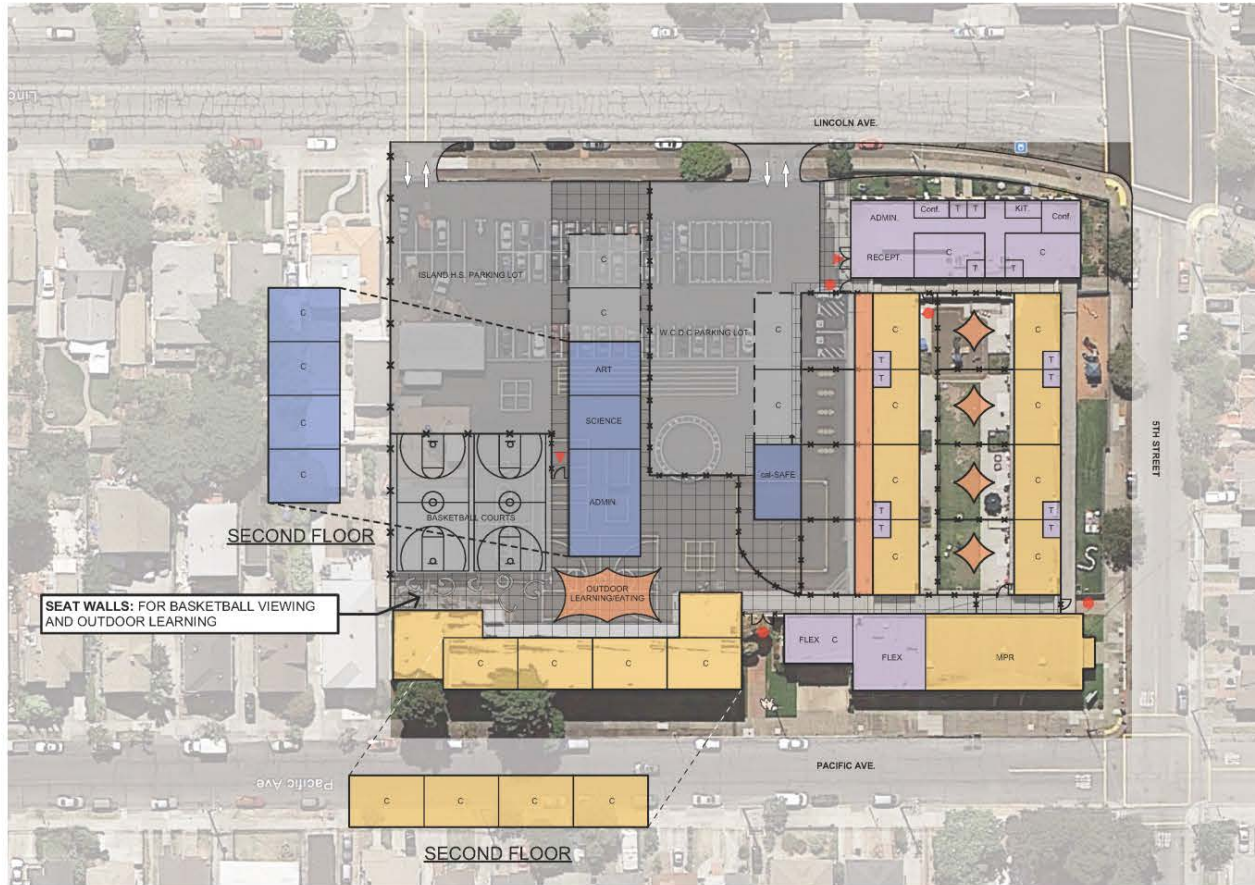
ACLC & Nea Community Learning Center



Academy of Alameda/ Adult School



WCDC & Island High School



KEY

- NEW BUILDING
- RECONFIGURED / EXPANDED
- MODERNIZED
- NEW / RECONFIGURED SITE WORK
- SHADE STRUCTURE/ COVERED WALK
- PLANTING AREA
- POSSIBLE FUTURE GROWTH
- NEW FENCE
- MAIN ENTRY POINT
- OUTER PERIMETER ENTRY POINT
- INNER PERIMETER ENTRY POINT
- C CLASSROOM
- T TOILET

DRAFT
FOR DISCUSSION ONLY

Schedule Update

